

**Agenda for the Board of Lowell Light & Power
Regular Board Meeting on
March 10, 2026 @ 6:00 p.m. at the LL&P Energy Center (625 Chatham St.)**

- I. CALL TO ORDER AND ROLL CALL**
- II. APPROVAL OF AGENDA**
- III. APPROVAL OF MINUTES**
 - a. February 10, 2026 – Regular Board Meeting
- IV. SAFETY MOMENT**
- V. PUBLIC COMMENT (for items not on the agenda)**
- VI. ACTION ITEM(S)**
 - a. Skid Steer Purchase Consideration
 - b. Michigan Energy Assistance Program Opt-In/Opt-Out Decision
 - c. FY 2027 Draft Operating and Capital Budget
- VII. INFORMATIONAL ITEMS**
 - a. Performance Data
 - b. Monthly Outage Report
 - c. Income Statement
 - d. Capital Projects Report
 - e. Distribution Report
 - f. Generation & Engineering Report
 - g. Office Report
 - h. Manager’s Report
 - i. Monthly Pictures
 - j. Schedule of Meetings
 - k. Supplemental Information
 - i. Sales and Cash & Investments Performance Data Charts
 - ii. Benevolence Report
 - iii. Full Income Statement
 - iv. February Payables
- VIII. NEXT REGULAR LL&P BOARD MEETING: April 14, 2026**
- IX. BOARD COMMENT**
- X. ADJOURNMENT**

NOTE: Any person who wishes to speak on an item included on the printed meeting agenda may do so. Speakers will be recognized by the Chair, at which time they will be required to state their name and will be allowed five (5) minutes maximum to address the Board.

**Minutes for the
Board of Lowell Light & Power's
Regular Meeting – February 10, 2026**

I. CALL TO ORDER AND ROLL CALL:

The meeting was called to order by Chairperson Beachum at 6:01 p.m., and General Manager West called the roll.

Present: Perry Beachum, Craig Fonger, Tina Cadwallader, Daniel Crawford, and Andrew Schrauben

Absent: None

Also Present: General Manager Charlie West, City Council Liaison Jim Salzwedel, Distribution Manager Zac Walker, Generation Superintendent Casey Mier, and Office Manager Julie Stewart

II. APPROVAL OF AGENDA:

Chairperson Beachum requested the addition of action item (C) Flat River Agreement.

It was MOVED BY CRAWFORD, SUPPORTED BY SCHRAUBEN, to approve the agenda as amended.

Yea: 5 Nay: 0 Absent: 0 Motion Carried

III. APPROVAL OF MINUTES:

It was MOVED BY CRAWFORD, SUPPORTED BY CADWALLADER, to approve the January 13, 2026 Regular Board Meeting Minutes as presented.

Yea: 5 Nay: 0 Absent: 0 Motion Carried

IV. SAFETY MOMENT:

Office Manager Stewart gave a safety moment concerning working outside in cold weather.

V. PUBLIC COMMENTS (for items not on the agenda):

There was no public comment.

VI. ACTION ITEMS:

A. Strategic Plan Review:

General Manager West presented an annual overview of the Strategic Plan with the board. As outcomes of an internal review, staff shared insights into strategic initiatives, key challenges, and a preview of the FY 2027 capital budget. The board provided feedback to staff. No action was taken.

B. Easement Negotiating Authority:

Staff informed the board of a potential amendment to one of the easements previously approved by the board for the FY 26 Capital Plan. After consulting with legal counsel, it was recommended that the Board consider delegating authority to the General Manager to negotiate the final terms of the amendment, with any proposed agreement being subject to legal review prior to being brought to City Council for approval.

It was MOVED BY FONGER, SUPPORTED BY CRAWFORD, to delegate to the General Manager the negotiating authority of final terms for any easement amendments, subject to legal review.

Yea: 5 Nay: 0 Absent: 0 Motion Carried

C. Agreement to Treat Flat River:

Beachum and Fonger presented an agreement from Lowell Friends of the Flat to allow treatment of the water for invasive aquatic species along the property owned by Lowell Light & Power on the Flat River.

It was MOVED BY CADWALLADER, SUPPORTED BY CRAWFORD, to sign the agreement from Lowell Friends of the Flat as presented.

Yea: 4 Nay: 0 Absent: 0 Abstain: 1 Motion Carried

VII. INFORMATIONAL ITEMS:

- A. Performance Data:** West reported on the January 2026 data.
- B. Monthly Outage Report:** Walker reported on the one outage in January 2026.
- C. Income Statement:** West reported on the January 2026 Income Statement.
- D. Capital Projects Report:** West reported on the January 2026 Capital Projects Report.
- E. Distribution Report:** Walker provided written updates to the board on Distribution department progress.
- F. Generation & Engineering Report:** Mier provided written updates to the board on Generation and Engineering department progress and presented a summary of the MISO Max Gen Event on January 24, 2026.
- G. Office Report:** Stewart provided written updates to the board on Office department progress.
- H. Manager's Report:** West provided written updates to the Board on the following items:
 - MPPA/MMEA/APPA Update
 - Safety Update
 - Cybersecurity Training
 - Open Position
 - MPPA Stakeholder Meeting

- Social Media Policy
- NISC
- Internal Strategic Planning Review
- Business Breakfast
- Work Anniversaries

I. **Monthly Pictures:** Staff provided photos to the board from the following events over the last month:

- Oberley Outage
- Christmas Tree Recycling
- Business Breakfast

J. **Schedule of Meetings:** February/March meetings were presented.

K. **Supplemental Information:** West provided supplemental information to the Board on the following items:

- Sales and Cash & Investments Performance Data Charts
- Benevolence Report
- Full Income Statement
- January Payables

VIII. **NEXT REGULAR LL&P BOARD MEETING:** Scheduled for Tuesday, March 10, 2026, at the Energy Center.

IX. **BOARD COMMENT:**

Cadwallader expressed great appreciation to Casey and staff for running the generators during extreme cold. Schrauben echoed his appreciation for Casey and the generation department. Crawford inquired how the flexible schedule for office staff has been received and stated his appreciation to the staff during the max gen event. Fonger thanked Charlie, Julie, Zac and Casey for their dedication and for keeping the teams motivated. Salzwedel reminisced about the decision years ago to purchase the first turbine and stated that he will not be able to attend the next board meeting. Beachum applauded the board for making wise decisions and the staff for leading LL&P in the correct direction, and mentioned the Superbowl halftime show.

X. **ADJOURNMENT**

It was MOVED BY CRAWFORD, SUPPORTED BY SCHRAUBEN to adjourn the Regular Board Meeting at 8:40 p.m.

Yea: 5

Nay: 0

Absent: 0

Motion Carried

Chairperson Beachum

Date

Memorandum



To: Charlie West

From: Zac Walker

Date: 2/26/26

Re: Approval Request – Purchase of Kubota SVL75-3HFWRCC and Skid Cutter Attachment

Purpose

This memorandum seeks Board approval for the purchase of a Kubota SVL75-3HFWRCC compact track loader and a compatible skid cutter attachment for a total cost of \$89,650.25.

Background

Our current skid steer is a 1999 model and does not have the capability to operate high-flow hydraulic attachments. This limitation prevents staff from utilizing modern brush-cutting and land-clearing equipment effectively. As a result, we rely on rented equipment or contracted services, which increases operational costs and limits scheduling flexibility.

Acquiring a compact track loader with high-flow hydraulics will allow staff to perform brush cutting and vegetation management in-house, improve project turnaround times, reduce rental expenses, and increase operational efficiency and safety.

Equipment Overview

Kubota SVL75-3HFWRCC Compact Track Loader

- High-flow hydraulics capable of operating demanding attachments
- Compact track design for improved stability on varied terrain
- Enclosed cab for operator comfort and safety
- Proven reliability and strong resale value

Skid Cutter Attachment

- Designed for brush clearing and land management
- Compatible with high-flow hydraulic systems
- Capable of cutting trees up to 7 inches in diameter
- Expands the versatility and productivity of the unit

Transportation Consideration

If approved, staff also plans to purchase a 24-foot, 21,000 lb. GVWR flatbed trailer. The trailer will allow the track loader and brush cutter attachment to be transported together, reducing the need for multiple trips. In addition, the trailer will be large enough to transport any transformers within our system that require relocation, providing additional operational flexibility.

Financial Considerations

- Total purchase cost: \$89,650.25
- Equipment has been competitively bid
- Expected reduction in rental and outsourcing costs
- Long-term asset value and extended equipment lifespan

Recommendation

Staff recommends Board approval of the purchase of the Kubota SVL75-3HFWVRCC compact track loader and skid cutter attachment for \$89,650.25 to improve operational efficiency, reduce long-term costs, and expand in-house service capabilities.

Walker, Zac
 132933
 lowell light & power
 zwalker@lowell-light.org
 6168978402

Quote Provided By
 KENT EQUIPMENT
 Tim VanLaan
 1550 10 MILE RD NW
 SPARTA, MI 49345
 email: timv@kentequipment.com
 phone: 6166755368

-- Standard Features --

-- Custom Options --



K Series KX033-4R1A

*** EQUIPMENT IN STANDARD MACHINE ***

FEATURES

Half Pitched Rubber Tracks or (Steel Tracks)
 ROPS/OPG (Top Guard, Level 1)
 4 Post Canopy or Heated Cab with A/C
 Suspension Seat
 Kubota 3 Hydraulic Pump Design
 1 Gear; 2 Variable
 Displacement Pumps
 Hydraulic Joystick Controls with Wrist Rests
 Hydraulic Accumulator
 Two Operating Pattern Selection System
 Standard Front Dozer Blade
 360 Degree Full Rotation
 70° Left and 48° Right Boom Swing Angle
 15.8 GPM Adjustable Auxiliary Hydraulics Port
 With Diverter Valve
 Five Second Quick Preheat System
 Key Switch Stop System
 Self Bleed Fuel System
 Two Speed Travel
 Auto Idle
 Thumb Bracket and Relief Valves
 Swivel Negative Brake
 Travel Negative Brake
 Third Line Return (Hydraulic)

ENGINE
 Kubota D1703M-DI-E4
 3 Cylinder, 4 Cycle
 24.8 Gross HP (SAE J1995) @ 2200 RPM
 23.2 Net HP (SAE J1349) @ 2200 RPM

OPERATIONAL DIMENSIONS
 Max Digging Depth 10' 6"
 Max Digging Radius @ Ground Level 16' 10"
 Max Vertical Digging Depth 7' 4"
 Max Dumping Height 11' 7"

DOZER BLADE DIMENSIONS
 Width 61"
 Height 13.5"/ 15.2"Angle
 Lift Above Ground 14.4"/ 15.9"Angle
 Drop Below Ground 14.8"/ 16.1"Angle

PERFORMANCE
 Digging Force @ Bucket 8138 lbs
 Digging Force @ Dipper Arm 3867 lbs
 Travel Speed (Low/High) 1.9/2.9 mph
 Traction Force (Low) 6091 lbs
 Lift Capacity 3230 lbs
 • Over Front
 • Blade Grounded
 • 2 Ft. Load Point Height
 • 8 Ft. Load Radius

DIMENSIONS AND OPERATING WEIGHT

KX033-4R1A, Rubber Tracks, ROPS/OPG (Top Guard, Level 1) Canopy, Angle Dozer Blade
 Overall Length 15' 6"
 Overall Width 5' 1"
 Overall Height 8' 1"
 Operating Weight* 7420 lbs.
 Ground Clearance 11.4"

* Includes operator's weight, 175 lbs.

KX033-4R1A Base Price: \$58,701.00

Selected Kubota Attachments

(1) 12" QA TRENCHING BUCKET K7872A-12" QA TRENCHING BUCKET	\$1,497.00
(1) QUICK COUPLER K7870A-QUICK COUPLER	\$1,464.00
(1) 24" QA TRENCHING BUCKET K7875A-24" QA TRENCHING BUCKET	\$2,026.00
(1) TRAVEL ALARM KIT K9784-TRAVEL ALARM KIT	\$335.00
(1) AT&T TELEMATICS MODEM DCU6700-AT&T TELEMATICS MODEM	\$475.00
(1) EXCAVATOR & WL TELEMATICS HARNESS K6704A-EXCAVATOR & WL TELEMATICS HARNESS	\$171.00
(1) HYD THUMB KIT K7910A-HYD THUMB KIT	\$4,145.00
Total Kubota Attachments:	\$10,113.00
Total Attachments:	\$10,113.00
Configured Price:	\$68,814.00
Sourcewell Discounts:	
Kubota Items:	(\$16,515.36)
Total Discount:	(\$16,515.36)
SUBTOTAL:	\$52,298.64
Kubota Item Fees:	
Dealer Assembly:	\$757.17
Freight Cost:	\$793.75
PDI:	\$400.00

Total Unit Price: \$54,249.56

Quantity Ordered: 1

Final Sales Price: \$54,249.56

Purchase Order Must Reflect Final Sales Price.

To order, place your Purchase Order directly with the quoting dealer

*All equipment specifications are as complete as possible as of the date on the quote. Additional attachments, options, or accessories may be added (or deleted) at the discounted price. All specifications and prices are subject to change. Taxes are not included. The PDI fees and freight for attachments and accessories quoted may have additional charges added by the delivering dealer. These charges will be billed separately. Prices for product quoted are good for 60 days from the date shown on the quote. All equipment as quoted is subject to availability.

Walker, Zac
 132933
 lowell light & power
 zwalker@lowell-light.org
 6168978402

Quote Provided By
 KENT EQUIPMENT
 Tim VanLaan
 1550 10 MILE RD NW
 SPARTA, MI 49345
 email: timv@kentequipment.com
 phone: 6166755368

-- Standard Features --

-- Custom Options --



K Series KX040-4R1A
 *** EQUIPMENT IN STANDARD MACHINE ***

FEATURES

Auto Idler
 Rubber Track Model
 ROPS/OPG (Top Guard, Level
 l) 4-Post Canopy
 Suspension Seat
 Kubota 1 Hydraulic Pump Load
 Sensing System
 1 Variable Displacement Pump
 All Controls Hydraulic Pilot
 Controls
 Two Operating Pattern
 Selection System
 Accumulator
 Digital Control Panel
 Attachment Flow Presets,
 Service Alerts
 Float Angle Blade w/ Bolt-on
 Cutting Edge
 360 Degree Full Rotation
 70 Degree Left, 55 Degree
 Right Boom Swing
 17.2 gpm Adjustable Auxiliary
 Hydraulics Port 1
 Auxiliary Hydraulics Diverter
 Valve
 Thumb Bracket and Relief
 Valves
 Five Second Quick Preheat
 System
 Key Switch Stop System
 Half Pitch Rubber Tracks
 Self Bleed Fuel System
 Auto-Downshift Two Speed
 Travel System
 Swivel Negative Brake
 Travel Negative Brake
 Third Line

ENGINE

D1803 Kubota DI Turbo CRS Tier 4
 Diesel Engine
 3 Cylinder, 4 Cycle
 38.9 Net HP @ 2200 rpm
 40.4 Gross HP @ 2200 rpm
 (SAEJ1995 & J1349)

OPERATIONAL

DIMENSIONS
 Max Digging Depth 11' 2.7"
 Max Digging Radius @ Ground
 Level 17' 9"
 Max Vertical Digging Depth 7' 4.8"
 Max Dumping Height 12' 9.5"

DOZER BLADE

DIMENSIONS
 Width 66.9"
 Height 15.75"
 Lift Above Ground 15.17"
 Drop Below Ground 15.94"

PERFORMANCE

Digging Force @ Bucket (K7875)
 9,535 lbs.
 Digging Force @ Dipper Arm 4,112
 lbs.
 Travel Speed (Low) 1.8 mph
 Travel Speed (High) 3.1 mph
 Climbing Ability 36% / 20°
 Lift Capacity 4,080 lbs.
 Over Front
 Blade Grounded
 2.0 ft. Load Point Height
 8.0 ft. Load radius

**DIMENSIONS AND
 OPERATING WEIGHT**

KX040-4R1A, Rubber Tracks,
 ROPS/OPG (Top Guard, Level
 l) Canopy, Angle Dozer Blade
 Overall Length 16' 8.1"
 Overall Width 5' 6.9"
 Overall Height 8' 1.8"
 Operating Weight 9,855 lbs.*
 Ground Clearance 12.9"
 * Includes operator's weight,
 175 lbs.

KX040-4R1A Base Price: \$66,122.00

Selected Kubota Attachments

(1) 12" QA TRENCHING BUCKET K7872A-12" QA TRENCHING BUCKET	\$1,497.00
(1) QUICK COUPLER K7870A-QUICK COUPLER	\$1,464.00
(1) 24" QA TRENCHING BUCKET K7875A-24" QA TRENCHING BUCKET	\$2,026.00
(1) HYD THUMB KIT K7910A-HYD THUMB KIT	\$4,145.00
(1) AT&T TELEMATICS MODEM DCU6700-AT&T TELEMATICS MODEM	\$475.00
(1) EXCAVATOR & WL TELEMATICS HARNESS K6704A-EXCAVATOR & WL TELEMATICS HARNESS	\$171.00
(1) AT&T TIER 3 TELEMATICS MODEM DCU6770-AT&T TIER 3 TELEMATICS MODEM	\$475.00
(1) EXCAVATOR & WL TELEMATICS HARNESS K6704A-EXCAVATOR & WL TELEMATICS HARNESS	\$171.00
(1) TRAVEL ALARM KIT K7927-TRAVEL ALARM KIT	\$168.00

Total Kubota Attachments: \$10,592.00

Total Attachments: \$10,592.00

Configured Price: \$76,714.00

Sourcewell Discounts:

Kubota Items: (\$18,411.36)

Total Discount: (\$18,411.36)

SUBTOTAL: \$58,302.64

Kubota Item Fees:

Dealer Assembly: \$509.67

Freight Cost: \$793.75

PDI: \$400.00

Total Unit Price: \$60,006.06

Quantity Ordered: 1

Final Sales Price: \$60,006.06

Purchase Order Must Reflect Final Sales Price.

To order, place your Purchase Order directly with the quoting dealer

*All equipment specifications are as complete as possible as of the date on the quote. Additional attachments, options, or accessories may be added (or deleted) at the discounted price. All specifications and prices are subject to change. Taxes are not included. The PDI fees and freight for attachments and accessories quoted may have additional charges added by the delivering dealer. These charges will be billed separately. Prices for product quoted are good for 60 days from the date shown on the quote. All equipment as quoted is subject to availability.

Recommended Unit

-- Standard Features --

-- Custom Options --



S Series

SVL75-3HFWVCC

*** EQUIPMENT IN STANDARD MACHINE ***

FEATURES

Vertical Lift Path Loader Frame
Standard Front Quick Coupler,
Float Standard
Hydraulic Quick Coupler Option
Selector Loader Arm Self-
Leveling
Loader Boom Lock
Open ROPS & Air Conditioned
ROPS/FOPS Cab Models
High Back, Adjustable, Vinyl,
Suspension Seat
2" Retractable Seat Belt and 2-
Piece Seat Bar
12V Electric Outlet
19.2 gpm Auxiliary Hydraulics
standard, 29.8 gpm Option
Direct To Tank Return Line
Rigid Mounted Undercarriage, 4
Lower Track Rollers
Rubber Tracks, 12.6" Standard,
15" Optional
Two Speed Travel System
Automatic Wet Disk Parking
Brake
Kubota 4 Hydraulic Pump Load
Sensing System
2 Gear, 2 Variable
Displacement Pumps
Hydraulic Joystick Controls,
Optional Multi-Functional Grips
ISO Operating Pattern
Hand And Foot Throttle
Controls
Electronic Travel Torque
Management
Automatic Glow Plugs
7" Multifunction Touch Screen
Integrated Rear Camera
Keyless Start
Self Bleed Fuel System
2 Front and 2 Rear Working
Lights
Hour Meter, Engine
Temperature and Fuel
Gauges and Warning Lights
Horn and Backup Alarm
Lockable Fuel Cap
Bolt On Grab Handles to enter
machine
KubotaNOW Telematics

BASIC UNITS

SVL75-3, 15.8" Rubber Tracks,
Open ROPS/FOPS Cab
Hydraulic Quick Coupler
High Flow Hydraulics & MF Grips
14-Pin Coupler
Reversing Fan
Cold-weather CCV Package

ENGINE
V3307 Kubota CR-TE4, Tier 4
Diesel Engine
4 Cylinder, 4 Cycle, Turbo Charged
74.3 Gross HP @ 2400 rpm

DIMENSIONS

Cab Height 81.8"
Width (without attachment) 65.9"
Width with wide track option
(without attachment) 69.1"
Length (without attachment) 112.0"
Length of Track on Ground 56.5"

OPERATIONAL

DIMENSIONS
Operating Weight*, SVL75H, 12.6"
Rubber Tracks, Open
ROPS/FOPS Cab, Mechanical
Quick Coupler 9,190 lbs.
Rated Operating Capacity (@ 35%
of Tipping Load) 2,490 lbs.
Rated Operating Capacity (ROC)
@ 35% of Tipping Load complies
with ISO 14397-1and SAE J 818
for crawler loaders
Rated Operating Capacity (ROC)
@ 50% of Tipping Load 3,557 lbs.
Tipping Load 7,112 lbs.
Auxiliary Hydraulics Flow 192/
29.8 gpm
Travel Speed (Low / High)
5.6 / 8.6 mph
Reach @ Maximum Height 39.6"
Height to Hinge Pin 122.7"
Ground Pressure (Standard Track)
5.8 psi
Ground Pressure (Wide Track) 4.7
psi
Traction Force 9,678 lbf.

* Includes operator's weight, 175
lbs.

SVL75-3HFWVCC Base Price: \$87,396.00

Selected Kubota Attachments

(1) 74" Heavy Duty, Low Profile, Long Floor, Cutting
Edge, Side Cutter, 19.2 cu-ft heaped capacity
AP-HD74LLC-74" Heavy Duty, Low Profile, Long Floor, Cutting
Edge, Side Cutter, 19.2 cu-ft heaped capacity
(1) SPECIAL APPL DOOR KIT CLOSED CAB \$3,930.00
S6861-SPECIAL APPL DOOR KIT CLOSED CAB
(1) SVL-3 AUX COUPLER GUARD \$489.00
S6973-SVL-3 AUX COUPLER GUARD
(1) HOSE STAY FOR SSV/SVL MODELS \$115.00
S6763-HOSE STAY FOR SSV/SVL MODELS
(1) AIR RIDE SEAT SUSPENSION KIT \$738.00
S6679-AIR RIDE SEAT SUSPENSION KIT

Selected Land Pride Attachments

(1) 60 Series Skid Cutter, 72" Width \$17,242.00
AP-SC6072-87-41-60 Series Skid Cutter, 72" Width

Total Kubota Attachments: \$8,009.00

Total Land Pride Attachments: \$17,242.00

Total Attachments: \$25,251.00

Configured Price: \$112,647.00

Sourcewell Discounts:

Kubota Items: (\$22,897.20)

Land Pride Items: (\$4,310.50)

Total Discount: (\$27,207.70)

SUBTOTAL: **\$85,439.30**

Kubota Item Fees:

Dealer Assembly: \$223.67

Freight Cost: \$887.50

PDI: \$400.00

Total Unit Price: \$86,950.47

Quantity Ordered: 1

Final Sales Price: **\$86,950.47**

Purchase Order Must Reflect Final Sales Price.

To order, place your Purchase Order directly with the quoting
dealer

*All equipment specifications are as complete as possible as of the date on the quote. Additional attachments, options, or accessories may be added (or deleted) at the discounted price. All specifications and prices are subject to change. Taxes are not included. The PDI fees and freight for attachments and accessories quoted may have additional charges added by the delivering dealer. These charges will be billed separately. Prices for product quoted are good for 60 days from the date shown on the quote. All equipment as quoted is subject to availability.

Walker, Zac
132933
lowell light & power
zwalker@lowell-light.org
6168978402

Quote Provided By
KENT EQUIPMENT
Tim VanLaan
1550 10 MILE RD NW
SPARTA, MI 49345
email: timv@kentequipment.com
phone: 6166755368

-- Standard Features --

-- Custom Options --



S Series

SVL97-3HFCC

*** EQUIPMENT IN STANDARD MACHINE ***

FEATURES

Final Tier 4 Certified Kubota Diesel Engine
Electronic Travel Torque Management System
Vertical Lift Path Loader Frame
Standard Front Quick Coupler, Float Standard
Hydraulic Quick Coupler Option
Loader Arm Self-Leveling
Loader Boom Lock
Open ROPS/FOPS
Optional enclosed and pressurized cab with A/C
High Back, Adjustable, Vinyl, Suspension Seat
Heated, Air Suspension Seat
Standard on Cab Models
2" Retractable Seat Belt And 2 Piece Seat Bar
12V Electric Outlet
23.1 gpm Auxiliary Hydraulics
Standard, 41.2 gpm Option
Case Drain Line
Rigid Mounted Undercarriage, 5 Lower Track Rollers
High Grip Rubber Tracks, 17.7" Standard
Two Speed Travel System
Automatic Wet Disk Parking Brake
Kubota 4 Hydraulic Pump Load Sensing System
2 Variable Displacement Pumps
KubotaNOW Telematics Standard
Lockable DEF Cap Guard
Hydraulic Joystick Controls
ISO Operating Pattern
Dial Knob and Foot Throttle Controls
Decelerator Pedal
Stall Guard Engine Controls
Automatic Glow Plugs
7" Multifunction Touch Screen
Integrated Rear Camera
Keyless Start
Key Switch Stop System
Self Bleed Fuel System
2 Front and 2 Rear Working Lights
Hour Meter, Engine Temperatur, DEF, and Fuel Gauges and Warning Lights
Horn and Backup Alarm
Lockable Fuel Cap

BASIC UNITS

SVL97-3HFCC, 17.7" Rubber Tracks,
Open ROPS/FOPS Cab w/ Cold-weather CCV Package,
Hydraulic Quick Coupler, Flow Auxiliary Hydraulics, KSR

OPERATIONAL

Operating Weight* 17.7" Rubber Tracks, Open ROPS/FOPS Cab, Mechanical Quick Coupler 11,676 lbs.
Rated Operating Capacity (ROC) @ 35% of Tipping Load complies with ISO 14397-1 and SAE J 818) 3,511 lbs.
Rated Operating Capacity (ROC) @ 50% of Tipping Load 4,850 lbs. Tipping Load 9,700 lbs. Auxiliary Hydraulics Flow 23.1/41.2 gpm
Travel Speed (Low / High) 5.5 / 8.4 mph
Reach @ Maximum Height 40.7" Height to Hinge Pin 128.6" Ground Pressure 4.5 psi.

ENGINE

V3800-Tier 4 Kubota Final Tier 4 Diesel Engine
4 Cylinder, 4 Cycle, Turbo Charged
96.4 Gross HP @ 2400 rpm

DIMENSIONS

Cab Height 83.1"
Width (without attachment) 77.2"
Length (without attachment) 123.7"
Length of Track on Ground 65.6"

* Includes operator's weight, 175 lbs.

SVL97-3HFCC Base Price: \$101,953.00

Selected Kubota Attachments

- (1) 80" Heavy Duty, Low Profile, Long Floor, Side Cutter and Bolt-on Cutting Edge, 21.3 cu-ft heaped capacity \$2,825.00
- S6606-80" Heavy Duty, Low Profile, Long Floor, Side Cutter and Bolt-on Cutting Edge, 21.3 cu-ft heaped capacity
- (1) SPECIAL APPL DOOR KIT CLOSED CAB \$3,930.00
- S6861-SPECIAL APPL DOOR KIT CLOSED CAB
- (1) HOSE STAY FOR SSV/SVL MODELS \$115.00
- S6763-HOSE STAY FOR SSV/SVL MODELS
- (1) SVL-3 AUX COUPLER GUARD \$489.00
- S6973-SVL-3 AUX COUPLER GUARD
- (1) AT&T TIER 3 TELEMATICS MODEM \$475.00
- DCU6770-AT&T TIER 3 TELEMATICS MODEM
- (1) SVL-3 HITCH GUARD \$279.00
- S6974-SVL-3 HITCH GUARD

Selected Land Pride Attachments

- (1) 60 Series Skid Cutter, 72" Width \$17,242.00
- AP-SC6072-87-41-60 Series Skid Cutter, 72" Width

Total Kubota Attachments: \$8,113.00

Total Land Pride Attachments: \$17,242.00

Total Attachments: \$25,355.00

Configured Price: \$127,308.00

Sourcewell Discounts:

- Kubota Items: (\$26,415.84)
- Land Pride Items: (\$4,310.50)
- Total Discount: (\$30,726.34)
- SUBTOTAL: \$96,581.66**

- Kubota Item Fees:
- Dealer Assembly: \$18.33
- Freight Cost: \$887.50
- PDI: \$400.00
- s6900 rear door guard installed \$2,312.00

Total Unit Price: \$100,199.49

Quantity Ordered: 1

Final Sales Price: \$100,199.49

Purchase Order Must Reflect Final Sales Price.

To order, place your Purchase Order directly with the quoting dealer

*All equipment specifications are as complete as possible as of the date on the quote. Additional attachments, options, or accessories may be added (or deleted) at the discounted price. All specifications and prices are subject to change. Taxes are not included. The PDI fees and freight for attachments and accessories quoted may have additional charges added by the delivering dealer. These charges will be billed separately. Prices for product quoted are good for 60 days from the date shown on the quote. All equipment as quoted is subject to availability.

AP-SC70 Series Skid Cutters

Various Flow Requirements | AVAILABLE FOR: SVL97-2

CLICK ON LINKS FOR
Manuals/features/3-D




RETURN TO
INDEX



- Width: 81"
- Length: 91"
- 7" Cutting Capacity
- 28-43 GPM
- Maximum Flow Rate 43 GPM
- 11.95 Cu. In. Motor
- 4 Reversible Heat-Treated Blades
- Blades 3/4" Plate
- Laminated Steel Blade Carrier
- 18 Carbide Points
- Standard Large Skid Shoes
- Tapered, Heavy-Duty
- Optional 4" Pressure Gauge
- Optional Case Drain
- Deck: 1/4"
- Side Skirts: 1/4"
- Chain Guards Standard
- Unique Bi-fold Door
- Maximum Operating Pressure: 3500 PSI

*Polycarbonate door required with this attachment.

MODEL NUMBER	DESCRIPTION	APPROX. MACHINE WEIGHT	SHIPPING WEIGHT	LIST PRICE
 AP-SC7072	SKID CUTTER - 72" Width Front and Rear Chains Bi-Fold Door Pusher Bar	2,568#	#2,704	\$ 19,857
<u>You May Choose any of these Options</u>				
-20	Case Drain Bundle	5#	5#	\$ 80
-41	Pressure Gauge Bundle	4#	4#	\$ 289
<u>You Must Choose a Polycarbonate Protective Door Option</u>				
-86	Protective Door (for skid steers not equipped with a cab door)	14#	14#	\$ 559
-87	No Protective Door			



Memorandum

To: Lowell Light & Power Board
From: Charlie West
Date: March 6, 2026
Re: Michigan Energy Assistance Fund Opt-In/ Out-Out

Consideration:

We are currently in the middle of our first year of the Lowell Energy Outreach (LEO) program, which is the local program option in lieu of participating in the Low-Income Energy Assistance Fund (LIEAF) program under Public Act 95. Under the updated law, we are required to notify the state of our decision to participate in the state's program or a local option for next plan year (October 2026 – September 2027), by the end of March.

To comply with the updated law last year, we partnered with Flat River Outreach Ministries (FROM) to establish the Lowell Energy Outreach (LEO) Program. The LEO program has gone smoothly so far, and both staff and FROM would both like to see the program continue.

Recommendation: Based on the position established by the board last year, it is staff's recommendation to opt-out of the state's LIEAF charge and continue the LEO program.

Additional Information

- The board voted to adopt a \$0.95, per meter, per month charge to fund the LEO Program.
- We anticipate making a recommendation to the board in June or July to update the LEO rate to reflect our actual experience with the program. Unless something changes, we will be recommending a significant reduction in the charge.
- The \$0.95 charge is expected to generate approximately \$35,000/year in revenue and through 5 months, program costs total approximately \$4,000.
- The state's program has increased the LIEAF charge from \$1.25 to \$1.50 for the upcoming plan year. The updated law allows the state to raise the charge by \$0.25 per year until it reaches \$2.00 and then it is escalated by an inflationary amount.

Memorandum



To: Lowell Light & Power Board
From: Charlie West
Date: March 6, 2026
Re: Fiscal Year 2027 Draft Operating and Capital Budgets

Section 16.3 of the City Charter requires LL&P to submit a copy of our next fiscal year's draft budget to the City in March. Based on this requirement, staff has spent time reviewing strategic planning objectives, long range financial projections, and upcoming capital projects. Based on our reviews, staff has compiled and is presenting a draft budget for the Board's consideration.

We will be reviewing the drafts at our meeting and will be looking to the Board for approval, in draft form, to send to the City for their preliminary budgeting process.

Ultimately, at our May Board Meeting, we will present a final draft of the FY 2027 Operating and Capital Budgets for your approval and inclusion in the City's final budget.

Lowell Light and Power FY 2027 Operating Budget

Type	FY 2024 Actual	FY 2025 Actual	FY 2026 Budget	FY 2026 Projected	FY 2027 Budget	\$ Change FY 26 to 27	% Change FY 26 to 27
OPERATING REVENUE							
Sales							
Residential Sales	2,833,837	3,042,260	3,230,440	3,347,607	3,565,289	217,682	6.50%
Residential Renewable Energy Charge	95,072	46,572	0	0	0	0	#DIV/0!
RS: Energy Optimization	46,472	47,945	48,018	56,910	87,559	30,649	53.86%
Residential VGP Program Charge	689	762	800	650	700	50	7.69%
Total Residential Sales	2,976,070	3,137,540	3,279,258	3,405,166	3,653,548	248,382	7.29%
Commercial Sales (GS)	1,384,211	1,386,298	1,481,086	1,509,198	1,575,130	65,932	4.37%
Commercial Sales (GSD)	1,725,480	1,899,315	1,952,358	1,983,222	2,107,108	123,886	6.25%
Commercial GS/GSD Renewable Energy Charge	51,835	25,411	0	0	0	0	#DIV/0!
GS/GSD Energy Optimization	32,487	32,751	33,340	42,779	77,455	34,676	81.06%
GS/GSD VGP Program Charge	373	388	450	430	450	20	4.65%
Commercial Sales (GSDTO)	3,638,424	3,983,765	4,223,765	4,200,789	4,529,645	328,856	7.83%
Commercial Sales (GSDPM)	545,082	565,306	607,071	596,189	634,031	37,842	6.35%
Commercial GSDTO/GSDPM Renewable Energy Charge	17,925	8,704	0	0	0	0	#DIV/0!
GSDTO/GSDPM Energy Optimization	34,795	34,903	34,848	45,118	80,532	35,414	78.49%
Total Commercial Sales	7,430,613	7,936,843	8,332,918	8,377,726	9,004,351	626,625	7.48%
Security/Standby Light Energy Sales	5,921	6,041	6,000	6,100	6,100	0	0.00%
Total Sales Revenue	10,412,603	11,080,423	11,618,176	11,788,992	12,663,999	875,007	7.42%
Service							
Customer Late Charges	59,467	56,932	55,000	53,982	50,000	(3,982)	-7.38%
Reconnect/Disconnect Fees	2,750	1,950	2,000	2,550	2,500	(50)	-1.96%
Pole Attachment Fees	6,589	6,877	6,900	6,900	6,900	0	0.00%
Miscellaneous Fees	40	150	1,500	2,153	1,500	(653)	-30.33%
Miscellaneous Service Revenue	2,880	2,080	7,500	2,211	5,000	2,789	126.14%
New Account/Account Relocation Fee	35,154	5,850	12,000	11,715	11,800	85	0.73%
Total Service Revenue	119,180	85,419	84,900	79,511	77,700	(1,811)	-2.28%
Miscellaneous							
Chatham Street Lease	56,531	59,266	59,220	59,655	60,000	345	0.58%
Other Revenue	10,738	12,962	1,500	940	1,000	60	6.38%
Total Miscellaneous Revenue	67,269	72,228	60,720	60,595	61,000	405	0.67%
TOTAL OPERATING REVENUE	10,599,052	11,238,070	11,763,796	11,929,097	12,802,699	873,602	7.32%
OPERATING EXPENSES							

Lowell Light and Power FY 2027 Operating Budget

Type	FY 2024 Actual	FY 2025 Actual	FY 2026 Budget	FY 2026 Projected	FY 2027 Budget	\$ Change FY 26 to 27	% Change FY 26 to 27
Generation							
Fuel	6,674	7,273	10,000	14,984	15,000	16	0.10%
Generation Expenses	63,038	65,890	57,000	66,084	66,000	(84)	-0.13%
Maintenance: Generating & Electrical Equipment	14,361	9,251	10,000	9,825	10,000	175	1.78%
Maintenance: Other Power Generation	7,201	10,333	11,000	7,393	12,000	4,607	62.32%
Maintenance: Structures	26,590	18,324	22,000	17,419	20,000	2,581	14.82%
Maintenance: Supervision & Engineering	0	0	0	0	0	0	#DIV/0!
Miscellaneous Other Power Generation Expenses	308,750	13,346	14,500	13,043	12,000	(1,043)	-8.00%
Operating Supervision/Engineering	24,455	26,679	30,000	28,830	29,000	170	0.59%
Safety and Training Expense	1,623	1,642	7,500	1,080	3,500	2,420	224.00%
Tools	588	228	1,000	326	1,000	674	206.36%
Total Generation Expenses	453,279	152,966	163,000	158,985	168,500	9,515	5.98%
Purchased Power							
AMP Ohio Energy Project	64,726	69,829	79,349	62,748	79,185	16,437	26.20%
Belle River Project	811,132	964,169	776,159	686,086	437,441	(248,645)	-36.24%
Campbell Number 3 Project	1,291,490	1,672,220	441,995	1,311,483	1,279,965	(31,518)	-2.40%
Deficiency Capacity Charge	(16,786)	(22,477)	116,091	30,522	196,820	166,298	544.84%
Forecasted Market Balancing	236,662	298,305	603,765	(698,388)	100,000	798,388	-114.32%
Energy Services Project	637,529	381,027	1,964,280	2,665,090	2,485,877	(179,213)	-6.72%
Land Filled Gas Projects (Granger & NANR)	820,681	869,987	762,182	773,548	645,728	(127,820)	-16.52%
MPPA Transmission Project	61,769	51,443	56,036	67,196	56,782	(10,414)	-15.50%
Transmission Charge	129,949	186,752	224,153	229,750	289,281	59,531	25.91%
Kalkaska: CT Project	478,486	594,257	599,676	608,883	598,620	(10,263)	-1.69%
MPPA Service Committee Expense	56,240	47,245	50,000	50,111	50,000	(111)	-0.22%
MPPA Solar Project	290,517	341,294	424,983	394,846	478,764	83,918	21.25%
Pegasus Wind Project	259,788	291,687	283,322	266,951	319,176	52,225	19.56%
Total Purchased Power Expenses	5,122,182	5,745,740	6,381,991	6,448,825	7,017,639	568,814	8.82%
Distribution							
Customer Installation Expense	54,906	44,551	45,000	54,420	42,000	(12,420)	-22.82%
Load Dispatching	0	0	0	0	0	0	#DIV/0!
Maintenance: Line Transformers	8,018	5,132	5,000	14,370	6,000	(8,370)	-58.25%
Maintenance: Meters	1,608	7,069	11,500	14,310	15,000	690	4.82%
Maintenance: Overhead Lines	162,592	86,334	81,000	106,824	130,000	23,176	21.69%
Maintenance: Street Lighting	13,268	6,673	13,500	4,426	9,000	4,574	103.33%
Maintenance: Structures	21,428	18,446	24,000	16,466	19,000	2,534	15.39%
Maintenance: Substations	10,127	13,130	25,000	38,959	55,000	16,041	41.17%
Maintenance: Underground Lines	54,866	59,317	71,000	49,587	75,000	25,413	51.25%
Meter Expenses	0	0	0	0	0	0	#DIV/0!
Miscellaneous Distribution Expense	72,841	110,333	87,000	80,038	89,000	8,962	11.20%
Operation Supervision/Engineering	123,795	122,645	100,000	137,846	120,000	(17,846)	-12.95%

Lowell Light and Power FY 2027 Operating Budget

Type	FY 2024 Actual	FY 2025 Actual	FY 2026 Budget	FY 2026 Projected	FY 2027 Budget	\$ Change FY 26 to 27	% Change FY 26 to 27
Operation Supervision/Xsmission System	215	556	1,000	1,029	2,000	971	94.31%
Overhead Line Expenses	5,512	3,533	2,500	1,128	3,000	1,872	166.05%
Street Lighting Expenses	0	0	0	0	0	0	#DIV/0!
Substation Expenses	1,222	70	1,000	851	1,000	149	17.47%
Safety and Training Expense	39,533	39,820	47,000	59,363	56,000	(3,363)	-5.67%
Tools	7,647	22,637	11,000	9,786	10,000	214	2.19%
Trucks and Transportation Expense	50,891	77,801	55,000	65,199	60,000	(5,199)	-7.97%
Tree Trimming Expense	48,453	64,306	96,000	58,033	110,000	51,967	89.55%
Underground Line Expenses	8,286	11,041	14,000	2,680	5,500	2,820	105.21%

Total Distribution Expenses	685,210	693,396	690,500	715,315	807,500	92,185	12.89%
------------------------------------	----------------	----------------	----------------	----------------	----------------	---------------	---------------

Customer Accounting

Customer Accounts: Supervision	15,965	17,070	21,500	19,279	23,000	3,721	19.30%
Customer Assistance Expense	40,909	40,130	50,000	44,722	52,000	7,278	16.27%
Customer Records/Collections Expense	83,359	74,891	92,000	83,331	92,000	8,669	10.40%
Customer Service Training	2,367	2,689	5,000	4,467	5,000	533	11.92%
Uncollectible Account Expense	760	665	0	1,000	0	(1,000)	-100.00%
Meter Reading Expense	17,662	20,763	25,000	20,482	25,000	4,518	22.06%
Miscellaneous Customer Accounts Expense	56,610	59,657	61,000	62,369	61,000	(1,369)	-2.19%
EOC Program Portfolio							
Residential Program Portfolio	29,864	21,323	50,000	26,740	74,000	47,260	176.74%
Comm/Indust. Program Portfolio	94,158	58,496	140,000	65,220	140,000	74,781	114.66%
Portfolio-Level Costs (Admin)	7,302	6,476	10,000	14,393	26,000	11,607	80.64%
Total EOC Program Portfolio	131,324	86,296	200,000	78,581	240,000	161,419	205.42%

Total Customer Accounting Expense	348,957	302,162	454,500	314,232	498,000	183,768	58.48%
--	----------------	----------------	----------------	----------------	----------------	----------------	---------------

Marketing and Advertising

Advertising Expense	21,785	34,639	40,000	36,683	50,000	13,317	36.30%
Demonstrating and Selling Expense	0	0	0	0	0	0	#DIV/0!

Total Marketing and Advertising Expense	21,785	34,639	40,000	36,683	50,000	13,317	36.30%
--	---------------	---------------	---------------	---------------	---------------	---------------	---------------

Admin./General/Outside Services

Administrative and General Salaries	207,752	211,842	230,000	248,442	255,000	6,558	2.64%
Board Conferences and Training	2,830	7,262	6,000	4,978	7,500	2,522	50.66%
Board Meeting and Related Expense	21,682	19,271	21,000	20,053	28,000	7,947	39.63%
O/S: Accounting, Legal, Engineering & Consultant	45,596	54,512	138,100	113,979	95,600	(18,379)	-16.12%

Total Admin/General/Outside Services Expense	277,859	292,887	395,100	387,452	386,100	(1,352)	-0.35%
---	----------------	----------------	----------------	----------------	----------------	----------------	---------------

Office, Insurance, & Maintenance

Injuries, Damages, & Safety Expenses	30,022	20,819	20,000	33,264	26,000	(7,264)	-21.84%
--------------------------------------	--------	--------	--------	--------	--------	---------	---------

Lowell Light and Power FY 2027 Operating Budget

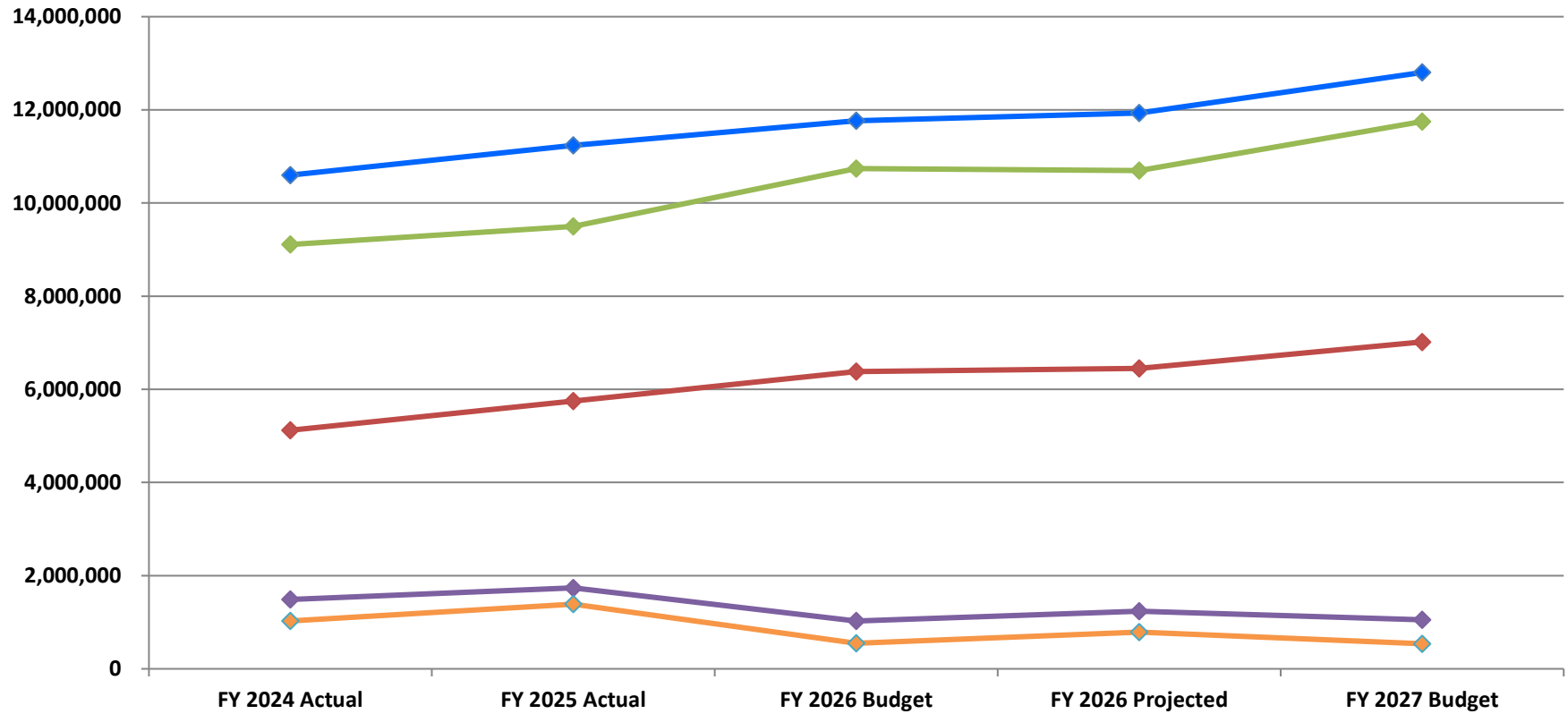
Type	FY 2024 Actual	FY 2025 Actual	FY 2026 Budget	FY 2026 Projected	FY 2027 Budget	\$ Change FY 26 to 27	% Change FY 26 to 27
Maintenance: Office Building	15,080	6,966	13,000	10,350	10,500	150	1.45%
Office Supplies, Fees, Dues, Phone, Maintenance	197,047	229,619	225,000	232,034	230,000	(2,034)	-0.88%
Property/Liability Insurance	56,303	64,521	70,000	66,394	74,000	7,606	11.46%
Total Office, Insurance, & Maintenance	298,452	321,925	328,000	342,042	340,500	(1,542)	-0.45%
Employee Benefits & Other Compensation							
Compensated Absences	189,995	230,724	206,540	203,274	230,000	26,726	13.15%
Employee Pensions & Benefits	663,389	494,126	852,629	839,082	933,000	93,918	11.19%
OPEB	(59,014)	39,282	10,000	10,000	10,000	0	0.00%
Other Compensation	79,738	86,124	80,000	87,414	92,000	4,586	5.25%
Taxes: Social Security & Medicare	111,159	119,511	122,000	120,560	138,388	17,828	14.79%
Retiree Medical Insurance Coverage	68,435	72,264	73,858	78,790	85,000	6,210	7.88%
Total Employee Benefits & Other Compensation	1,053,701	1,042,030	1,345,026	1,339,120	1,488,388	149,268	11.15%
Miscellaneous							
Conference/Seminar Expense	48,494	86,850	79,500	67,839	67,500	(339)	-0.50%
Benevolence - In Kind	6,957	15,478	11,000	6,361	11,000	4,639	72.93%
Benevolence - Financial	3,395	3,830	5,000	4,833	6,500	1,667	34.50%
Miscellaneous General Expenses	2,634	1,366	4,000	10,725	8,000	(2,725)	-25.41%
Total Miscellaneous Expenses	61,479	107,524	99,500	89,758	93,000	3,242	3.61%
Depreciation Expenses							
Depreciation Expense	786,031	807,169	840,000	861,405	900,000	38,595	4.48%
Total Depreciation Expenses	786,031	807,169	840,000	861,405	900,000	38,595	4.48%
TOTAL OPERATING EXPENSES	9,108,935	9,500,438	10,737,617	10,693,816	11,749,627	1,055,811	9.87%
OPERATING INCOME (LOSS)	1,490,117	1,737,632	1,026,179	1,235,281	1,053,072	(182,209)	-14.75%
NON-OPERATING REVENUE (EXPENSE)							
Interest Income							
Interest and Dividend	71,864	80,237	60,000	69,857	60,000	(9,857)	-14.11%
Interest Income Series 2012	0	0	0	0	0	0	#DIV/0!
Fifth Third Investments FMV Change	(30,170)	(1,037)	0	0	0	0	#DIV/0!
Total Interest Income	41,694	79,200	60,000	69,857	60,000	(9,857)	-14.11%

Lowell Light and Power FY 2027 Operating Budget

Type	FY 2024 Actual	FY 2025 Actual	FY 2026 Budget	FY 2026 Projected	FY 2027 Budget	\$ Change FY 26 to 27	% Change FY 26 to 27
Interest Expense							
Interest Expense on Customer Deposits	(2,328)	(3,342)	0	(1,840)	0	1,840	-100.00%
Interest Expense Bonds	51,318	39,863	28,237	29,784	16,213	(13,572)	-45.57%
Total Interest Expense	48,991	36,521	28,237	27,944	16,213	(11,732)	-41.98%
Gain/Loss on Sale of Property/Investment							
Gain on Property Disposal	1,149	69,050	0	16,000	0	(16,000)	-100.00%
Gain on Sale of Investments	0	0	0	0	0	0	#DIV/0!
Loss on Property Disposal	(331)	(12,626)	0	0	0	0	#DIV/0!
Loss on Sale of Investments	0	0	0	0	0	0	#DIV/0!
Total Gain/Loss on Sale of Property/Investments	818	56,424	0	16,000	0	(16,000)	-100.00%
Mutual Aid							
Mutual Aid	0	35,048	0	14,697	0	(14,697)	-100.00%
Total Mutual Aid	0	35,048	0	14,697	0	(14,697)	-100.00%
Transfers							
PILOT - City of Lowell	457,036	483,906	511,478	519,165	558,540	39,375	7.58%
Total Transfers	457,036	483,906	511,478	519,165	558,540	39,375	7.58%
TOTAL NON-OPERATING REVENUE (EXPENSE)	(463,515)	(349,756)	(479,715)	(446,555)	(514,752)	(68,197)	15.27%
NET INCOME (LOSS)	1,026,602	1,387,876	546,465	788,726	538,320	(250,406)	-31.75%

FY 2024 - FY 2027 Trends of Key Financial Metrics/Measures

◆ Total Operating Revenue ◆ Total Purchased Power Expenses ◆ Total Operating Expenses
◆ Operating Income (Loss) ◆ Net Income (Loss)



FY 2027 Capital Budget

Project/Item	Budget	Description
IT Related Projects	\$ 15,000	Misc IT Related Projects
Capital Equipment	\$ 265,000	Distribution, generation, and office tools and equipment, as needed
Voltage Conversion Projects	\$ 40,000	
Undergrounding Projects	\$ 225,000	Underground Little Gee Dr.
Equipment Replacement Fund	\$ 275,000	Annual Contribution - including software replacement
Generation Projects	\$ 80,000	
System Expansion Budget	\$ 50,000	Stony Bluff phase 7
Minor Capital Projects	\$ 50,000	Misc minor projects, including customer installs
Total	\$ 1,000,000	N/A

Cash Flow Projection

Operating Revenue	\$ 12,802,699
Operating Expenses	\$ (11,749,627)
OPEB	\$ 10,000
Depreciation	\$ 900,000
Non-Operating Expenses	\$ (514,752)
Non-Cash Operating Expenses	\$ -
Bond Principal	\$ (445,000)

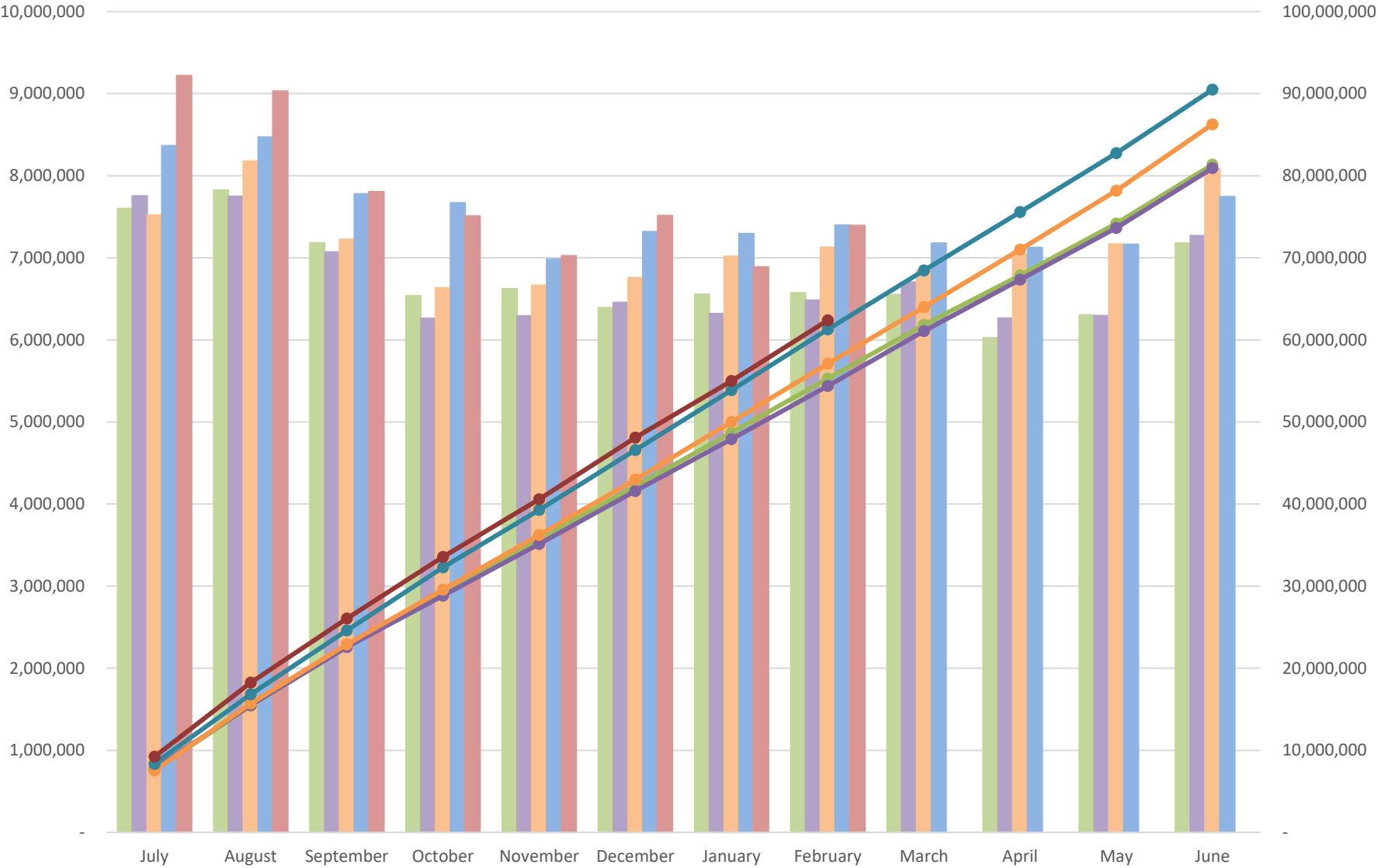
FY 2027 Cash Generated for Capital Budget	\$ 1,003,320
--	---------------------

FY 2026 Projected Capital Budget Remaining	
---	--

Total Cash Available	\$ 1,003,320
-----------------------------	---------------------

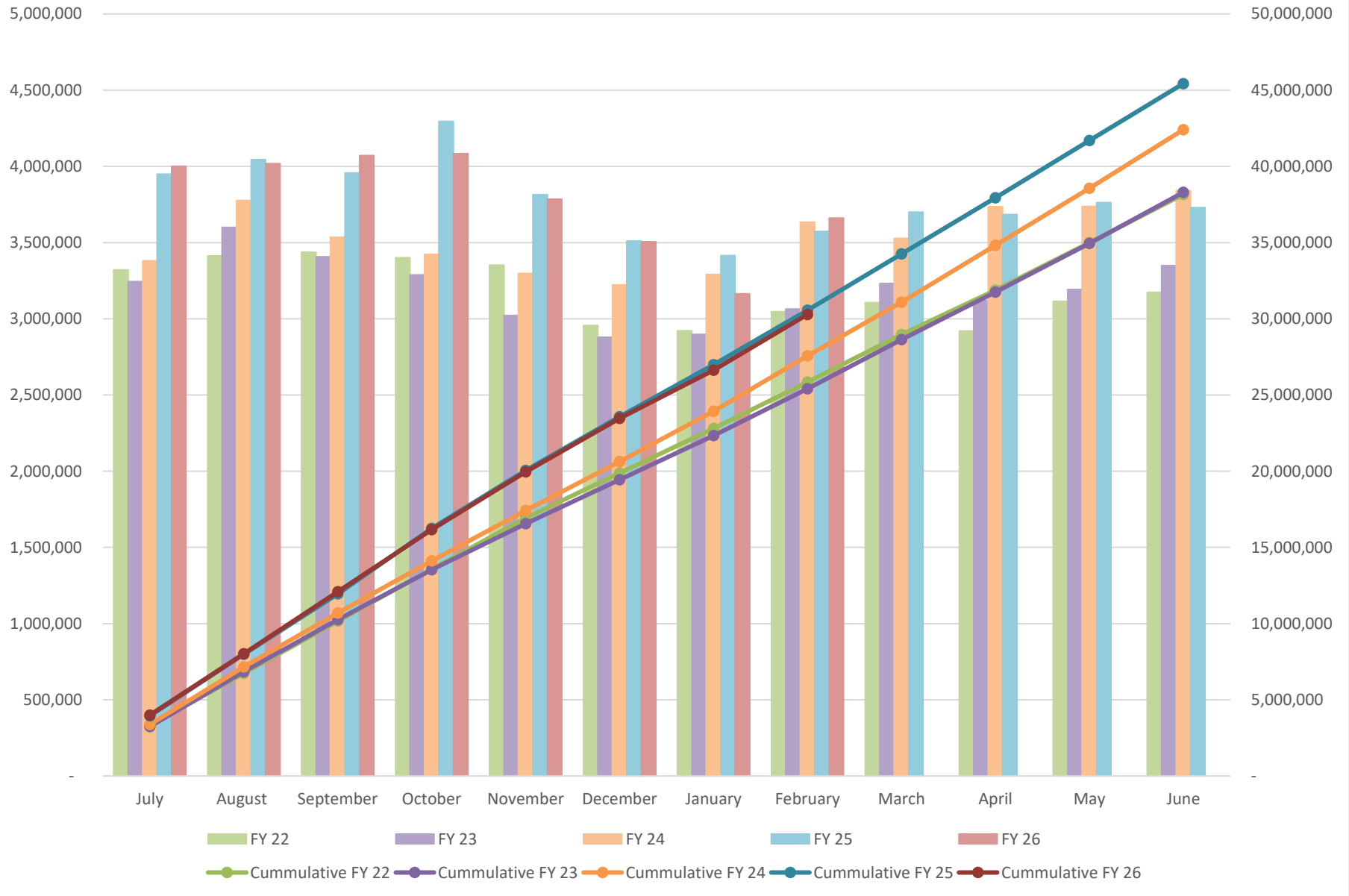
Projected Cash Growth	\$ 3,320
------------------------------	-----------------

Total kWh Sales FY 2022 - FY 2026



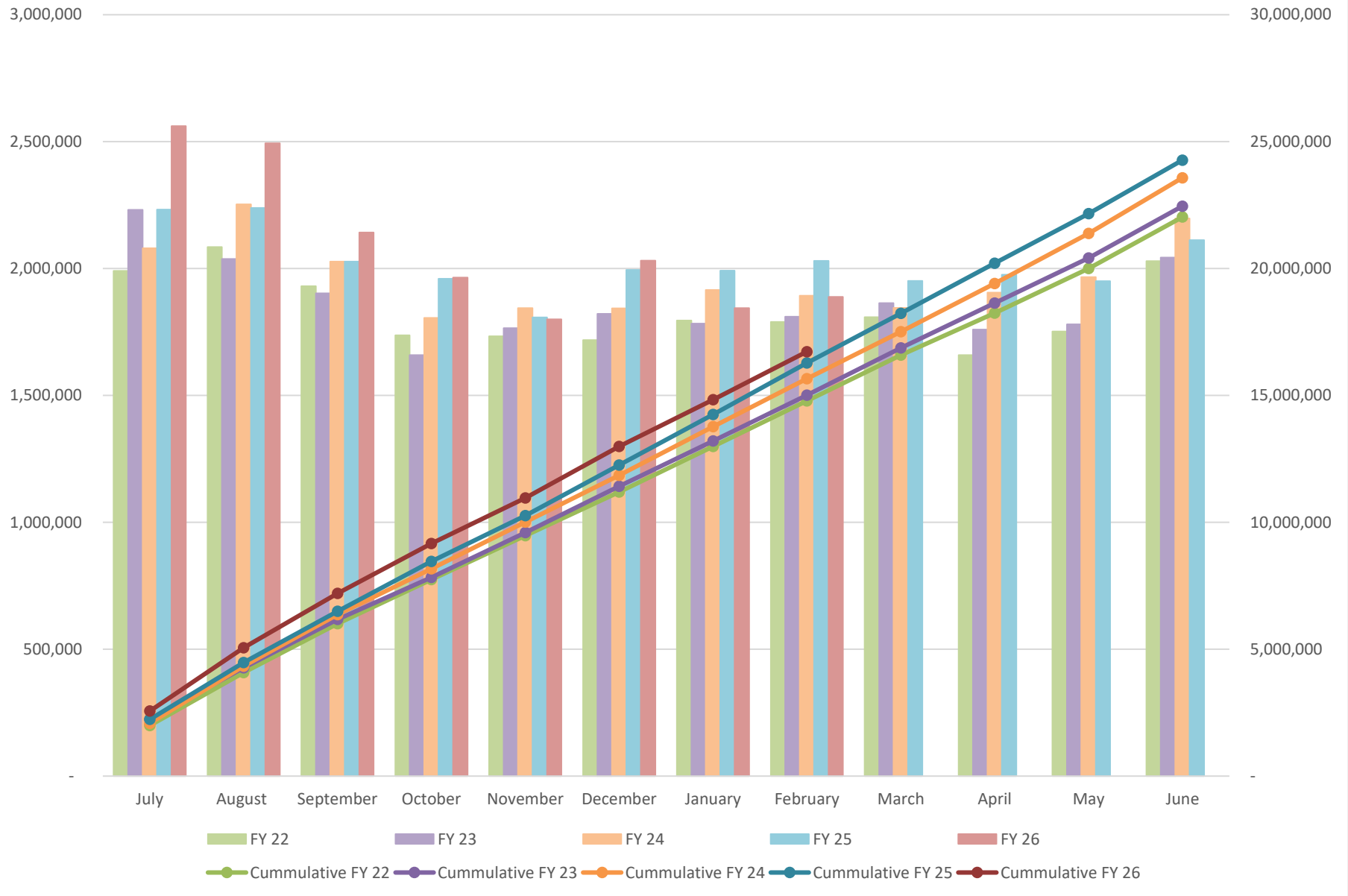
■ FY 22 ■ FY 23 ■ FY 24 ■ FY 25 ■ FY 26
● Cummulative FY 22 ● Cummulative FY 23 ● Cummulative FY 24 ● Cummulative FY 25 ● Cummulative FY 26

Industrial kWh Sales FY 2022 - FY 2026 Primary Metered

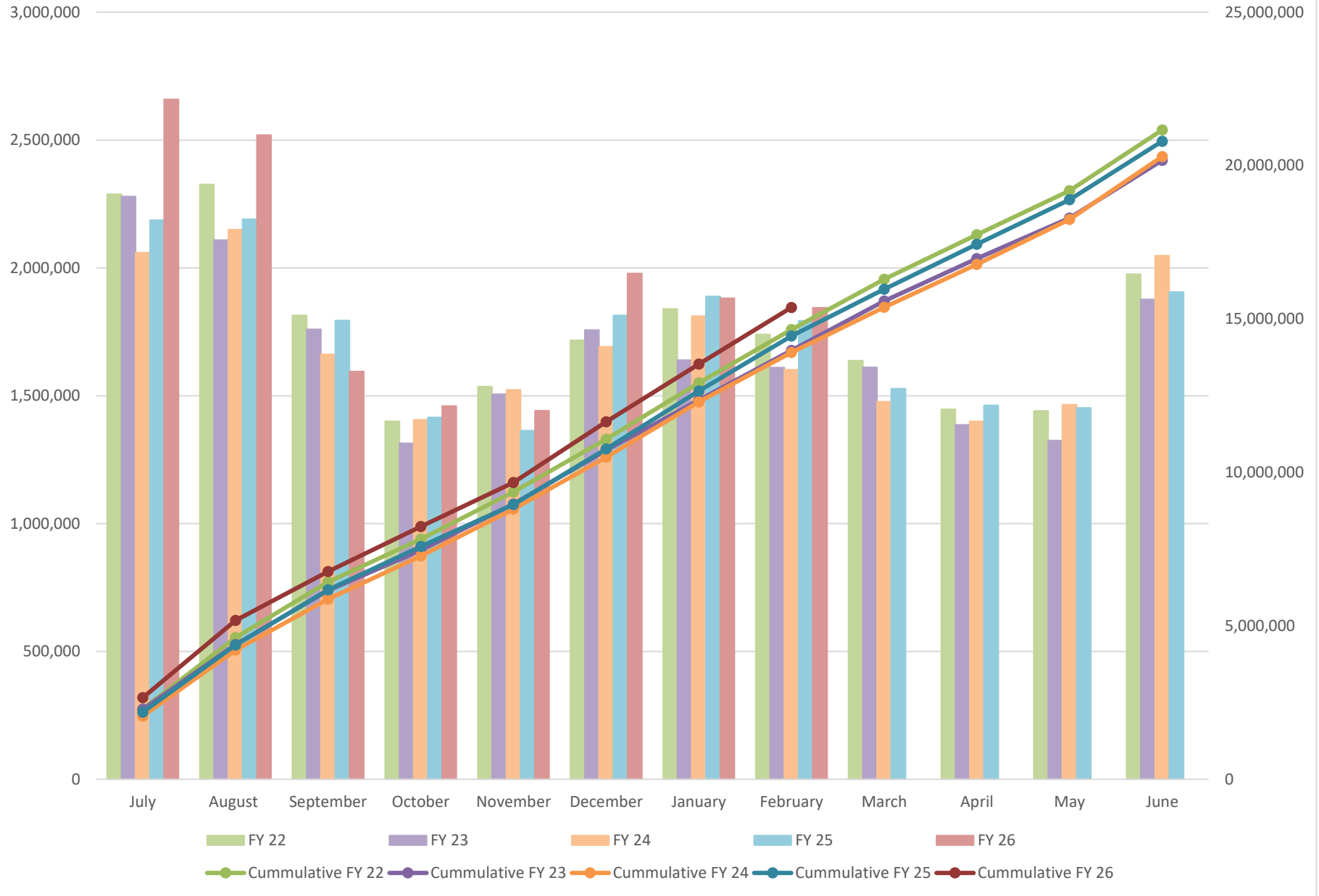


Commercial kWh Sales FY 2022 - FY 2026

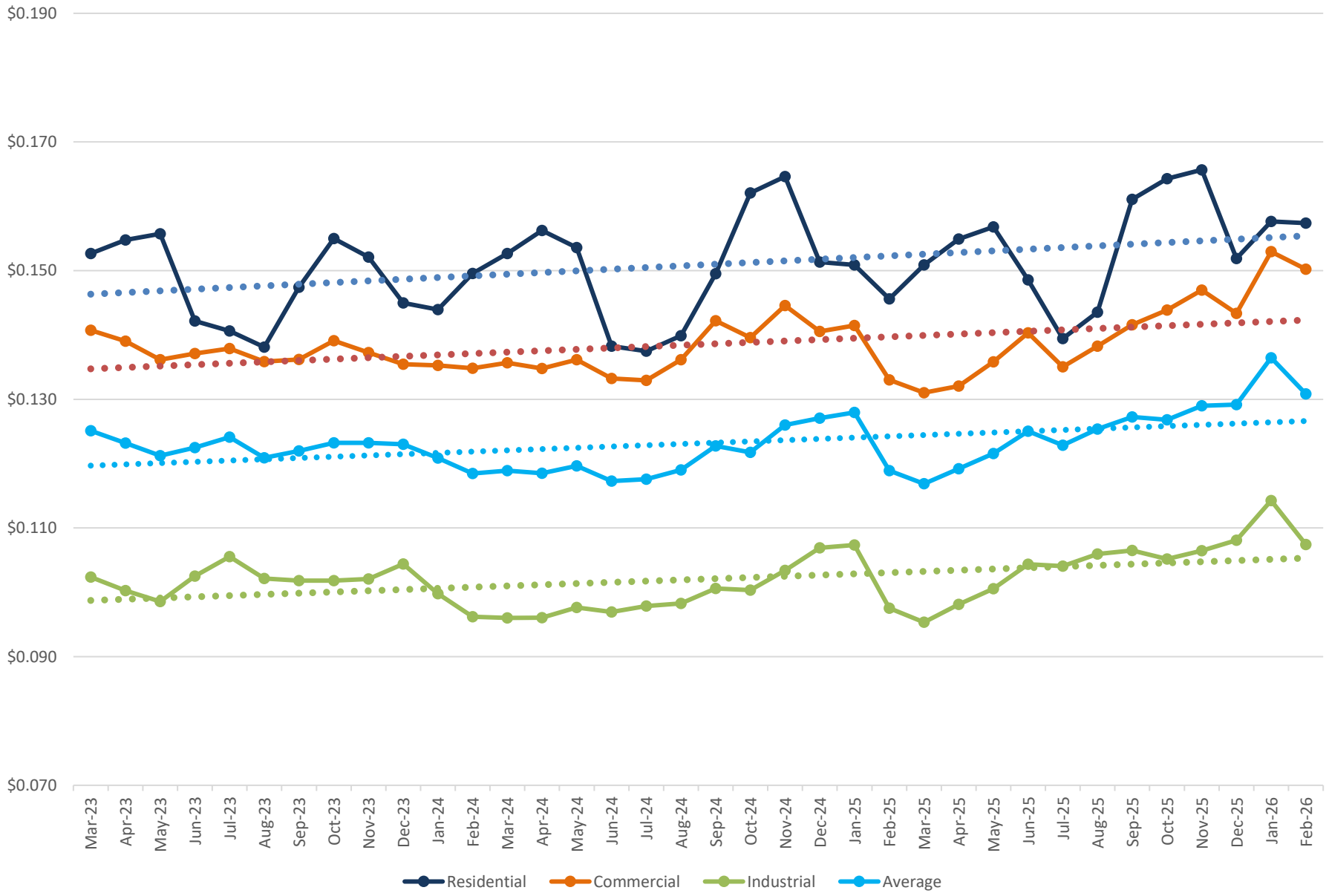
General Service, General Service Demand



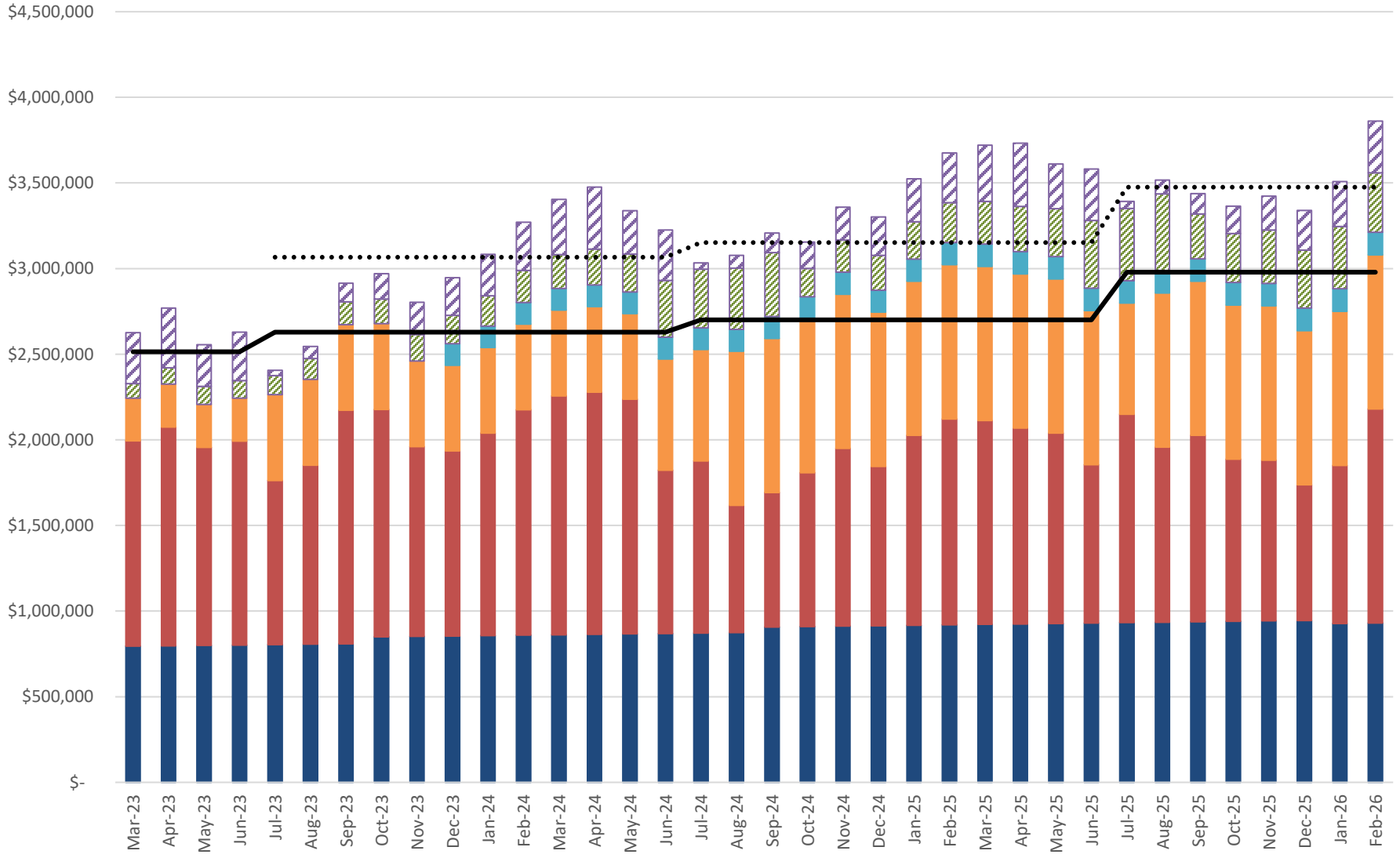
Residential kWh Sales FY 2022 - FY 2026



Cost Per kWh

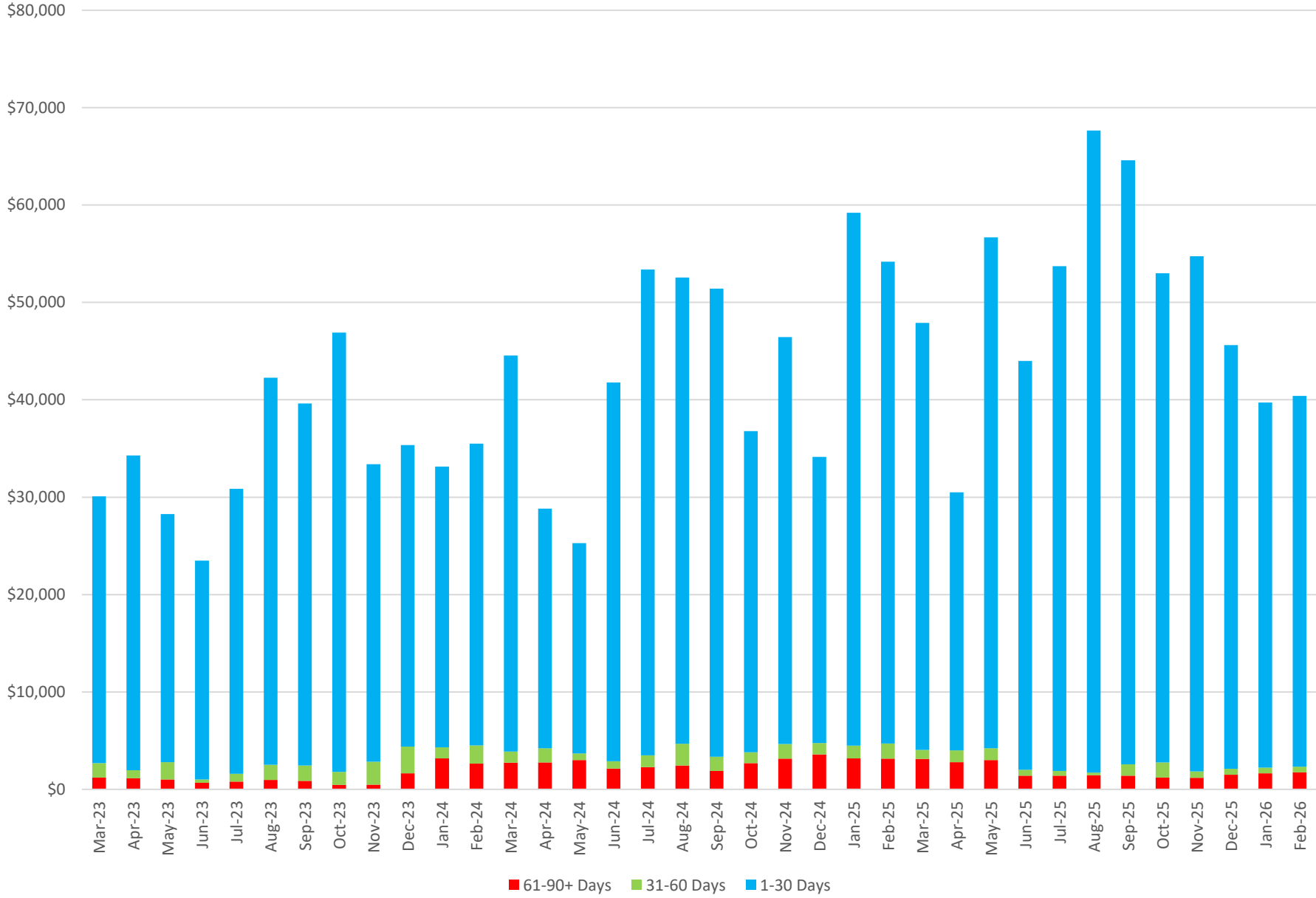


Unrestricted Investments and Cash

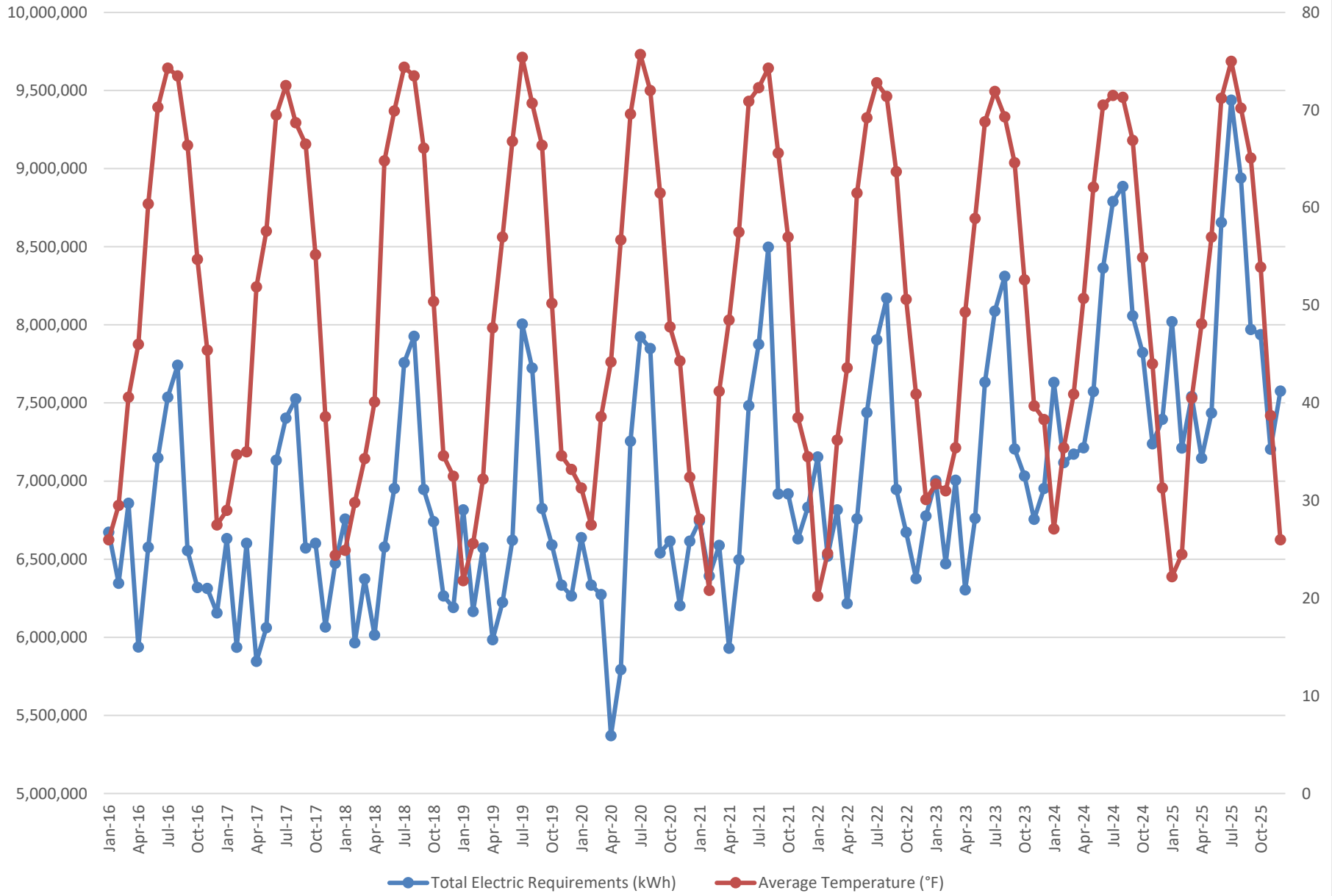


- Fifth Third Investments*
- Huntington Bank*
- Huntington Investments*
- Huntington Money Market Fund*
- Vehicle Replacement Fund
- Bond Redemption Fund*
- 120 Days of Cash
- 140 Days of Cash

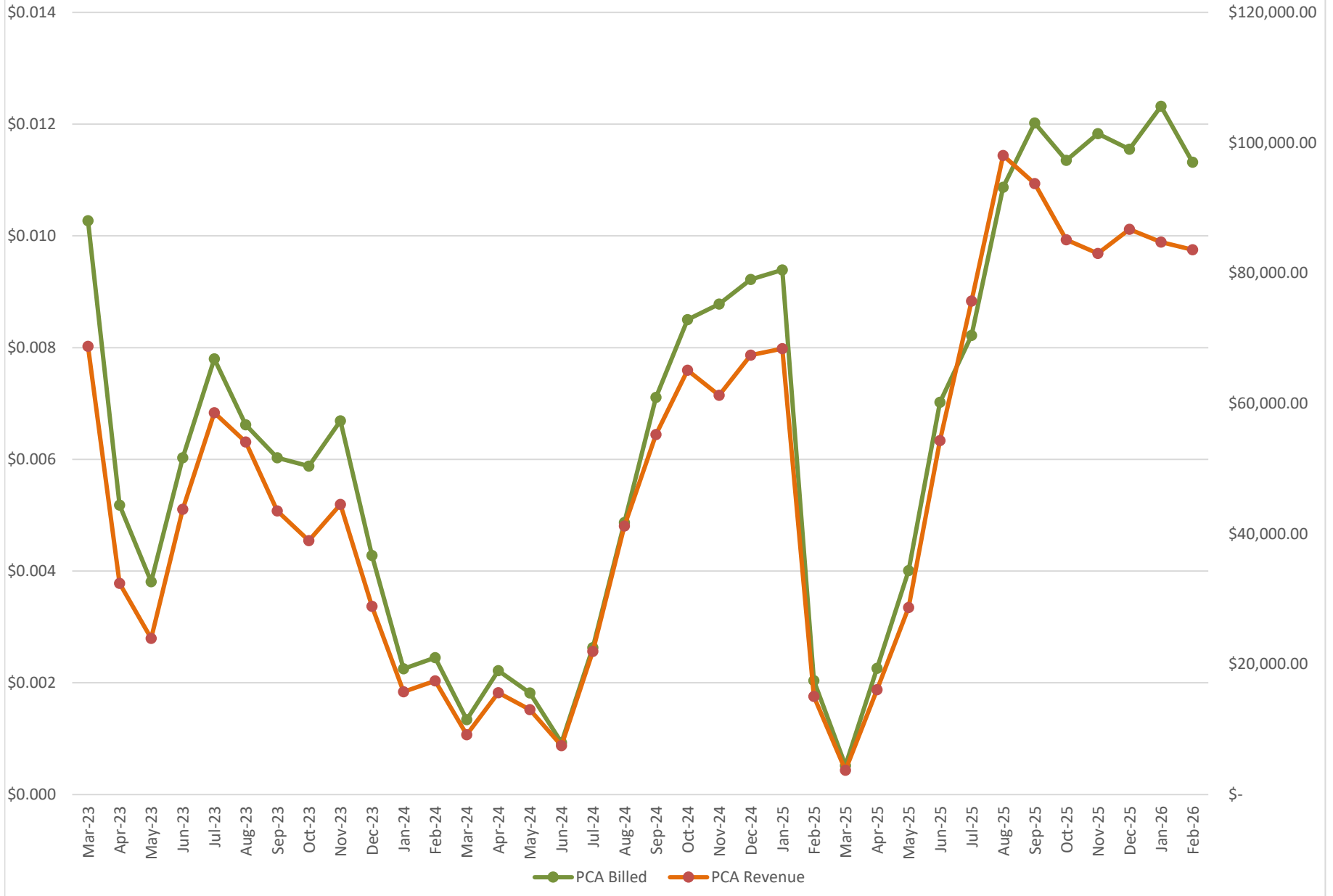
Aging Analysis



Electric Requirements



PCA and PCA Revenue



February 2026 Income Statement

Line Item	Current Month Actual	Current Month Budget	Variance %	Prior YTD Actual	Current YTD Actual	Current YTD Budget	Current YTD Variance	Variance %	Yearly Budget Total	% of Budget Used	Amount Until Yearly Budget Total is Reached
OPERATING REVENUE											
Sales Revenue	967,193.10	953,060.00	1.48%	7,325,343.16	7,994,826.15	7,821,286.31	173,539.84	2.22%	11,618,176.00	68.81%	3,623,349.85
Service Revenue	5,072.71	11,947.31	-57.54%	61,605.26	50,000.94	61,232.26	(11,231.32)	-18.34%	84,900.00	58.89%	34,899.06
Miscellaneous Revenue	4,995.16	4,881.11	2.34%	40,871.28	39,904.17	39,638.70	265.47	0.67%	60,720.00	65.72%	20,815.83
TOTAL OPERATING REVENUE	\$ 977,260.97	\$ 969,888.42	0.76%	\$ 7,427,819.70	\$ 8,084,731.26	\$ 7,922,157.27	\$ 162,573.99	2.05%	\$ 11,763,796.00	68.73%	\$ 3,679,064.74
OPERATING EXPENSES											
Generation Expenses	20,557.57	14,211.38	44.66%	96,026.02	105,657.37	108,784.02	(3,126.65)	-2.87%	163,000.00	64.82%	57,342.63
Purchased Power Expenses	250,991.12	444,776.08	-43.57%	3,154,224.34	4,048,019.95	4,077,025.78	26,445.60	0.65%	6,381,991.00	63.43%	2,333,971.05
Distribution Expenses	59,677.06	60,861.66	-1.95%	422,485.08	479,399.59	466,106.09	13,293.50	2.85%	690,500.00	69.43%	211,100.41
Customer Accounting Expense	27,263.72	40,324.85	-32.39%	203,627.05	204,582.00	304,214.13	(99,632.13)	-32.75%	454,500.00	45.01%	249,918.00
Marketing and Advertising Expense	1,430.63	2,649.93	-46.01%	23,352.23	22,690.06	26,007.45	(3,317.39)	-12.76%	40,000.00	56.73%	17,309.94
Admin/General/Outside Services Expense	28,546.79	32,636.11	-12.53%	197,279.16	233,794.51	274,527.30	(40,732.79)	-14.84%	395,100.00	59.17%	161,305.49
Office, Insurance, & Maintenance	33,482.72	27,672.57	21.00%	200,999.94	225,232.79	214,817.16	10,415.63	4.85%	328,000.00	68.67%	102,767.21
Employee Benefits & Other Compensation	96,848.75	95,050.16	1.89%	808,001.61	867,347.14	869,958.50	(2,611.36)	-0.30%	1,345,025.78	64.49%	477,678.64
Miscellaneous Expenses	3,515.02	3,711.39	-5.29%	67,908.98	54,956.34	64,698.34	(9,742.00)	-15.06%	99,500.00	55.23%	44,543.66
Depreciation Expenses	74,398.82	69,300.00	7.36%	542,907.96	572,485.28	554,400.00	18,085.28	3.26%	840,000.00	68.15%	267,514.72
TOTAL OPERATING EXPENSES	\$ 596,712.20	\$ 789,750.20	-24.44%	\$ 5,716,812.37	\$ 6,814,165.03	\$ 6,902,493.61	\$ (88,328.58)	-1.28%	\$ 10,737,616.78	63.46%	\$ 3,923,451.75
OPERATING INCOME (LOSS)	380,548.77	180,138.22	111.25%	1,711,007.33	1,270,566.23	1,019,663.67	250,902.56	24.61%	1,026,179.22	123.82%	(244,387.01)
NON-OPERATING REVENUE (EXPENSE)											
Interest Income	9,753.31	3,411.15	185.92%	51,668.16	59,058.67	40,341.25	18,717.42	46.40%	60,000.00	98.43%	941.33
Interest Expense	2,315.83	2,343.73	-1.19%	25,967.18	18,945.30	18,975.71	(30.41)	-0.16%	28,237.67	67.09%	9,292.37
Gain/Loss on Sale of Property/Investments	0.00	0.00	#DIV/0!	56,423.60	75.00	0.00	75.00	#DIV/0!	0.00	#DIV/0!	(75.00)
Mutual Aid	0.00	0.00	#DIV/0!	13,695.60	14,696.69	0.00	14,696.69	#DIV/0!	0.00	#DIV/0!	(14,696.69)
Transfers	38,109.95	41,548.22	-8.28%	290,605.81	347,829.70	347,439.72	389.98	0.11%	511,477.92	68.00%	163,648.22
TOTAL NON-OPERATING REVENUE (EXPENSE)	\$ (30,672.47)	\$ (40,480.80)	-24.23%	\$ (194,785.63)	\$ (292,944.64)	\$ (326,074.19)	\$ 33,129.55	-10.16%	\$ (479,715.59)	61.07%	\$ (186,770.95)
NET INCOME (LOSS)	\$ 349,876.30	\$ 139,657.42	150.52%	\$ 1,516,221.70	\$ 977,621.59	\$ 693,589.47	\$ 284,032.12	40.95%	\$ 546,463.63	178.90%	\$ (431,157.96)

Capital Expenses Fiscal Year July 1, 2025 - June 30, 2026

Updated: February 2026

Capital Budget For Fiscal Year FY 2026	\$1,086,000
Amount Remaining from FY 2025 Capital Budget	\$0
Total Available Capital Budget in FY 2026	<u>\$1,086,000</u>

Work in Process

G/L #	Description	YTD Amt
107.552.20	Energy Center Improvements	\$9
107.630.20	Substation Access Control	\$9,838
107.670.20	Voltage Conversion Projects	\$78,257
107.700.20	504 E Main St (FROM)	\$38,573
107.700.20	Undergrounding Projects	\$5,057
130.100.20	Vehicle Equipment Replacement Fund	\$200,000

Total WIP Capital Expense	<u>\$331,733</u>
---------------------------	------------------

Work in Process Transferred to Property, Plant, and Equipment (PPE)

G/L #	Description	YTD Amt
107.551.20	Engine Room Improvements	\$13,168
107.630.20	SCADA Upgrade	\$16,079
107.630.20	Server Replacement	\$36,718
107.640.20	Stony Bluff	\$13,663
107.700.20	Flat River Estates	-\$9,284

Total PPE Expenses	<u>\$70,344</u>
--------------------	-----------------

Capital Assets Purchased

	Crack Seal Energy Center	\$15,550
368.000.20	Transformers	\$233,123
391.100.20	Computer Equipment & Software	\$2,175

Total Capital Assets Purchased	<u>\$250,848</u>
--------------------------------	------------------

Capital Asset Sales/Invoicing for Capital Projects

Net Capital Sales	<u>\$0</u>
-------------------	------------

Total Capital Expenses	<u>\$652,926</u>
------------------------	------------------

Remaining Capital Expense Balance	<u>\$433,074</u>
-----------------------------------	------------------

Capital Budget and Expenses Incurred for Fiscal Year 2026
Updated: February 2026

Project	FY 2026 Budget Amt	Midyear Reallocation(s)	Total Budget	Current Month Spent	YTD Spent	Amount Remaining
IT Related Projects	\$ 68,000		\$ 68,000	\$ (36,718)	\$ 63,843	\$ 4,157
Capital Equipment	\$ 190,000		\$ 190,000		\$ 233,123	\$ (43,123)
Voltage Conversion Projects	\$ 165,000		\$ 165,000	\$ 5,969	\$ 78,257	\$ 86,743
Undergrounding Projects	\$ 195,000		\$ 195,000		\$ 5,057	\$ 189,943
Equipment Replacement Fund	\$ 300,000		\$ 300,000	\$ 25,000	\$ 200,000	\$ 100,000
Facility Improvements	\$ 18,000		\$ 18,000		\$ 29,694	\$ (11,694)
Generation Projects	\$ 32,000		\$ 32,000		\$ -	\$ 32,000
System Expansion Budget	\$ 68,000		\$ 68,000		\$ 4,379	\$ 63,621
Minor Capital Projects	\$ 50,000		\$ 50,000	\$ 830	\$ 38,573	\$ 11,427
Total	\$ 1,086,000	\$ -	\$ 1,086,000	\$ (4,919)	\$ 652,926	\$ 433,074

Memorandum



To: Charlie West
From: Zac Walker
Date: 3/2/2026
Re: March board packet

New Services

This month, five new services were installed.

- Harvest Meadows 3 meters
- Stony Bluff 1 meter
- Other locations 1 meter

Ultra Capacitor

No change due to the weather

James Street Voltage conversion

The James Street Voltage Conversion Project has now been fully completed. While the system voltage conversion was successfully carried out in the fall, the final wreck-out activities were completed this month, marking the official closeout of the project.

This project was included in our FY26 capital budget and represents the successful execution of one of our planned infrastructure upgrade initiatives for the fiscal year.

Project Timelines

I have updated our project list to reflect updated timelines and completed projects. We can discuss this in more detail during the board meeting.

Fy2026 project timeline

First Quarter (July-September)

- Finish Stony Phase 6 ----done
- James St voltage conversion -----done
- Three Brothers---done
- Forestry Mulcher ---done

- Transformer moves (High School, Michigan Wire, Metric) Michigan wire done
- Added finished Grindle Street voltage conversion

Second Quarter (October-December)

- Center Street voltage conversion --- started
- Church Street --- moved to fourth quarter
- Calvary Church---moved fourth quarter

Added FROM the new housing Apartments/ voltage upgrade on E. Main St. and Jefferson St --- installed, still removing old wire

Third Quarter (January-March)

- Little gee drive – moved to FY27 - end of July 2026
- F.R.O.M. Store upgrade

Added removing the old 4160 circuit on North St. and the Lafayette St. step-down transformer.

Fourth Quarter (April-June)

- Nirvana conversion
- 1800 W. Main St.
- Doc Add wire pull
- Remove the wire from W. Main St.

Memorandum



To: Charlie West

From: Casey Mier

Date: 3/5/2026

Re: March 2026 Generation and Engineering Update

- A. **Generator Operation:** We did not operate the generators this past month due to low energy prices. We plan to operate during the month of March for exercising purposes.
- B. **Distribution System Study:** We continue to work with Verdantas on updating the electrical system study and future project details.
- C. **IT:** No major updates at this time.
- D. **Budget Planning:** We are working on setting goals and planning projects for next fiscal year. The projects include improving safety, operations, and electrical analysis software.

Memorandum



To: Charlie West
From: Julie Stewart/Megan Mora
Date: March 6, 2026
Re: March 2026 Office Department Update

- A. Broker Search:** The management team has completed final meetings with the broker finalists and conducted follow-up discussions to clarify outstanding items. Daniel has been included in the final round of discussions. After further evaluation, we are preparing a final decision.
- B. NISC:** We had our first pull of data from Milsoft to NISC this week. It went well. We have also reached out to our payment processor (Invoice Cloud) to inform them we are ending our service with them in January 2027.
- C. Company Training:** Alyssa coordinated with staff at LL&P and Pine Rest to have a speaker come in to train us on verbal de-escalation skills. This specific training was chosen by LL&P staff a few months back to help us gain more insight when handling high-emotion customers.
- D. Stay Interviews:** Sarah has been conducting Stay Interviews across the organization to proactively gather employee feedback. The purpose is to better understand what is working well, identify areas for improvement, and strengthen engagement and retention efforts. We anticipate using this feedback to guide future organizational and culture initiatives.
- E. Cross Training/Critical Processes:** Much time has been spent by all office staff over the last month working to learn critical tasks that Lisa performs to be ready for her maternity leave.

**Manager's Report for the
March 2026 Regular LL&P Board Meeting
Last Updated on March 6, 2026**

A. **MPPA/MMEA/APP A Update:**

- a. **MPPA:** MPPA is coping with the unexpected death of friend and colleague Keith Parrot. I encourage everyone to read the article about Keith in MMEA Currents. We worked with Keith on many projects; he was always enjoyable and incredibly knowledgeable.

The February MPPA BOC meeting was mostly routine, with updates on multiple compliance-related topics and projects. The BOC passed a budget amendment for the Kalkaska CT project, necessary due to unexpected repairs to one of the units.

Outside of normal business, MPPA provided more details on the Max Generation Event associated with Winter Storm Fern and updated us on the Behind the Meter Generation strategic initiative. While we have viewed this initiative locally, LL&P is one of several MPPA member utilities considering behind-the-meter generation to address critical capacity needs. We will discuss this further throughout the year. MPPA's workplan includes member engagement and final analysis before seeking local commitments by year-end.

- b. **MMEA:** MMEA had a busy month, starting with a board of commissioners meeting, followed by the APPA Legislative Rally, and ending with a strategic planning session facilitated by Steve Vandermeer. The board meeting was business as usual. The Legislative Rally was eventful, beginning with almost everyone's flight getting canceled on Sunday due to the weather. Fortunately, we rescheduled for Monday and arrived in D.C. in time for meetings, where we met with our congressman to highlight the value of public power and discuss critical issues.

As a final point, the strategic planning session with Steve Vandermeer provided a valuable opportunity for the MMEA board to work collaboratively in reviewing and updating MMEA's major strategic goals. Building on previous discussions, the session reaffirmed the importance of MMEA's core mission and identified additional measures critical to public power's success in Michigan.

- B. **Safety Update:** We held a company-wide de-escalation training conducted by Pine Rest last month. The Employee Assistance Program (EAP) we offer through Pine includes training opportunities for our staff.

Many of our employees attended an MMEA webinar hosted by Alpha Omega (our new safety partner) to review MIOSHA incidents from 2025.

- C. **Cybersecurity Training:** If you have not completed your KnowBe4 training, please complete it before the board meeting. If you have any issues or questions, please do not hesitate to contact us for assistance.
- D. **Open Position:** We posted a Journeyman Lineworker job. Recently, multiple people have reached out to inquire about opportunities at LL&P, so we are excited to fill this position.
- E. **MPPA Stakeholder Meeting:** Everyone who requested to be registered has been registered and should have received a confirmation email. If you asked me to register you and have not received a confirmation email, please let me know.

- F. **Spring Break:** I will be out of the office April 6 – 10 for Spring Break.
- G. **NISC:** In addition to the updates provided in the Office Report, we are preparing for an all-employee meeting to provide important information to the entire company regarding the NISC conversion.
- H. **Solar Interconnection Review:** Based on a customer request, we are working with UFS to review our compensation model for customer-installed solar. We updated our value of solar calculation 2 years ago, and this work will build on those efforts while also revisiting our approach and other considerations for customer-installed solar or any inverter-based resource.
- I. **Tree Give-Away:** We partnered with the Arbor Day Foundation again for a late April event. We moved the event from fall to spring to better align with Earth Day and other outreach efforts.
- J. **Anniversaries:** There were no work anniversaries in February.

Community Cleanup



**LL&P and Other City Department's
Schedule of Meetings, Events, and Important Dates**

March 11	MPPA Board Meeting (10:00 am)
March 12	MMEA Board Meeting (10:00 am)
March 16	Lowell City Council Meeting (7:00pm)
March 27-28	Public Power Lineworkers Rodeo
March 28	Lowell Expo (9am-2pm)
March 29-April 1	APPA Engineering & Operations Conference APPA Safety Summit
April 3	Good Friday – LL&P Office Closed
April 6	Lowell City Council Meeting (7:00 pm)
April 8	MPPA Board Meeting (10:00 am)
April 14	Lowell Light and Power Board Meeting (6:00 pm)

**Lowell Light & Power Performance Data
For the Month of February 2026**

Electric Sales and Usage Data

Category	Current Month	Current Month, Previous Year	% Change Year to Year	Current Fiscal Year, YTD	Previous Fiscal Year, YTD
Total Electric Sales (\$)	\$967,193	\$879,628	9.95%	\$7,994,826	\$7,503,974
Residential Customers*	2,762	2,708	1.99%	N/A	N/A
Residential Sales (kWh)	1,843,832	1,793,231	2.82%	15,378,613	14,446,038
Residential Sales (\$)	\$290,228	\$261,078	11.17%	\$2,355,359	\$2,149,694
Average Residential Bill	\$105	\$96	8.99%	N/A	N/A
Average Residential kWh Sales Per Customer	668	662	0.81%	N/A	N/A
Commercial Customers**	446	441	1.13%	N/A	N/A
Commercial Sales (kWh)	1,888,025	2,030,436	-7.01%	16,723,178	16,281,837
Commercial Sales (\$)	\$283,651	\$270,101	5.02%	\$2,397,803	\$2,256,878
Average Commercial Bill	\$636	\$612	3.84%	N/A	N/A
Average Commercial kWh Sales Per Customer	4,233	4,604	-8.06%	N/A	N/A
Industrial Customers***	8	8	0.00%	N/A	N/A
Industrial Sales (kWh)	3,660,900	3,573,300	2.45%	30,286,200	30,555,000
Industrial Sales (\$)	\$393,314	\$348,449	12.88%	\$3,241,664	\$3,097,402
Average Industrial Bill	\$49,164	\$43,556	12.88%	N/A	N/A
Average Industrial kWh Sales Per Customer	457,613	446,663	2.45%	N/A	N/A
Internal Generation (kWh)	112,928	17,323	551.90%	189,992	45,056
*Residential Customers Previous Month				2,760	
**Commercial Customers Previous Month				447	
***Industrial Customers Previous Month				8	

Information From Prior Months (Delayed Reporting by MPPA)

Total Electric Requirements (kWh) - December 2025/2024	7,575,592	7,395,190
Peak Demand (mW) - January 2026/2025	13.765	14.312

Cash And Investments

	Unrestricted		Restricted		
	Current Month	Change from Previous Month	Current Month	Change from Previous Month	
Fifth Third Investments	\$ 930,413.60	\$ 2,455.26	Equipment Replacement	\$ 348,155.72	\$ (14,897.29)
Huntington Bank	\$ 1,249,348.99	\$ 326,736.98	Customer Deposits	\$ 200,878.45	\$ 2,725.04
Huntington Money Market Fund	\$ 131,822.72	\$ 169.62	Bond Reserve Fund	\$ 136,476.34	\$ 362.87
Bond Redemption Fund	\$ 302,110.43	\$ 39,289.86	LEO Fund	\$ 11,160.99	\$ 2,860.52
Huntington Investments	\$ 900,000.00	\$ -			
Total	\$ 3,513,695.74	\$ 368,651.72		\$ 696,671.50	\$ (8,948.86)

Benevolence Reporting FY 2026

In Kind	Total Budget	Current Month	Year to Date
Chamber Work			\$ 1,880.03
Pink Arrow			\$ 814.69
Total	\$ 11,000.00	\$ -	\$ 2,694.72

Financial	Total Budget	Current Month	Year to Date
Harvest Hustle			\$ 350.00
YMCA Turkey Trot			\$ 250.00
Pink Arrow			\$ 100.00
Lowell Area Museum			\$ 300.00
Lowell Chamber			\$ 50.00
Lowell High School Athletics			\$ 500.00
Lowell Showboat			\$ 500.00
LWC Golf Outing			\$ 200.00
Lowell Little League			\$ 450.00
Lowell Girls Lacrosse		\$ 350.00	\$ 350.00
Total	\$ 5,000.00	\$ 350.00	\$ 3,050.00

Grand Total	\$ 16,000.00	\$ 350.00	\$ 5,744.72
--------------------	---------------------	------------------	--------------------

February 2026 Income Statement

Line Item	Current Month Actual	Current Month Budget	Variance %	Prior YTD Actual	Current YTD Actual	Current YTD Budget	Current YTD Variance	Variance %	Yearly Budget Total	% of Budget Used	Amount Until Yearly Budget Total is Reached
-----------	----------------------	----------------------	------------	------------------	--------------------	--------------------	----------------------	------------	---------------------	------------------	---

OPERATING REVENUE

Sales

Residential Sales	282,798.59	270,471.70	4.56%	2,015,816.00	2,313,333.21	2,196,166.65	117,166.56	5.34%	3,230,440.00	71.61%	917,106.79
RS: Energy Optimization Charge	7,374.54	4,053.81	81.92%	32,186.07	41,599.14	32,707.25	8,891.89	27.19%	48,018.00	86.63%	6,418.86
Residential VGP Program Charge	55.24	66.98	-17.53%	529.45	427.07	543.87	(116.80)	-21.48%	800.00	53.38%	372.93
Total Residential Sales	290,228.37	274,592.49	5.69%	2,095,103.45	2,355,359.42	2,229,417.77	125,941.65	5.65%	3,279,258.00	71.83%	923,898.58
Commercial Sales (GS)	125,695.51	121,660.47	3.32%	917,407.68	1,027,988.86	999,876.86	28,112.00	2.81%	1,481,086.00	69.41%	453,097.14
Commercial Sales (GSD)	150,953.72	161,903.33	-6.76%	1,234,701.62	1,336,158.41	1,305,294.14	30,864.27	2.36%	1,952,358.00	68.44%	616,199.59
GS/GSD Energy Optimization	6,447.85	2,786.25	131.42%	21,298.80	29,283.11	22,195.57	7,087.54	31.93%	33,340.00	87.83%	4,056.89
GS/GSD VGP Program Charge	37.08	36.96	0.31%	270.62	287.55	303.79	(16.24)	-5.35%	450.00	63.90%	162.45
Commercial Sales (GSDTO)	339,344.28	339,021.33	0.10%	2,621,122.90	2,813,902.24	2,829,294.67	(15,392.43)	-0.54%	4,223,765.00	66.62%	1,409,862.76
Commercial Sales (GSDPM)	47,270.94	49,680.09	-4.85%	374,708.67	396,940.48	407,822.31	(10,881.83)	-2.67%	607,071.00	65.39%	210,130.52
GSDTO/GSDPM Energy Optimization	6,698.50	2,879.07	132.66%	22,704.63	30,821.00	23,081.18	7,739.82	33.53%	34,848.00	88.44%	4,027.00
Total Commercial Sales	676,447.88	677,967.51	-0.22%	5,226,330.67	5,635,381.65	5,587,868.54	47,513.11	0.85%	8,332,918.00	67.63%	2,697,536.35
Security/Standby Light Energy Sales	516.85	500.00	3.37%	3,909.04	4,085.08	4,000.00	85.08	2.13%	6,000.00	68.08%	1,914.92

Total Sales Revenue	\$ 967,193.10	\$ 953,060.00	1.48%	\$ 7,325,343.16	\$ 7,994,826.15	\$ 7,821,286.31	\$ 173,539.84	2.22%	\$ 11,618,176.00	68.81%	3,623,349.85
----------------------------	----------------------	----------------------	--------------	------------------------	------------------------	------------------------	----------------------	--------------	-------------------------	---------------	---------------------

Service

Customer Late Charges	3,982.71	4,580.71	-13.05%	38,448.18	37,548.07	38,256.50	(708.43)	-1.85%	55,000.00	68.27%	17,451.93
Reconnect/Disconnect Fees	50.00	0.00	#DIV/0!	1,100.00	1,700.00	1,142.86	557.14	48.75%	2,000.00	85.00%	300.00
Pole Attachment Fees	0.00	6,155.39	-100.00%	6,876.60	25.00	6,869.85	(6,844.85)	-99.64%	6,900.00	0.36%	6,875.00
Meter Charges	0.00	0.00	#DIV/0!	150.00	0.00	0.00	0.00	#DIV/0!	0.00	#DIV/0!	0.00
Miscellaneous Fees	80.00	197.39	-59.47%	1,440.00	1,520.00	866.95	653.05	75.33%	1,500.00	101.33%	(20.00)
Miscellaneous Service Revenue	0.00	155.32	-100.00%	5,850.48	1,377.87	6,025.74	(4,647.87)	-77.13%	7,500.00	18.37%	6,122.13
New Account/Account Relocation Fee	960.00	858.50	11.82%	7,740.00	7,830.00	8,070.36	(240.36)	-2.98%	12,000.00	65.25%	4,170.00

Total Service Revenue	\$ 5,072.71	\$ 11,947.31	-57.54%	\$ 61,605.26	\$ 50,000.94	\$ 61,232.26	\$ (11,231.32)	-18.34%	\$ 84,900.00	58.89%	34,899.06
------------------------------	--------------------	---------------------	----------------	---------------------	---------------------	---------------------	-----------------------	----------------	---------------------	---------------	------------------

Miscellaneous

Chatham Street Lease	4,935.16	4,870.48	1.33%	39,525.44	39,481.28	38,963.88	517.40	1.33%	59,220.00	66.67%	19,738.72
Other Revenue	60.00	10.63	464.68%	1,345.84	422.89	674.82	(251.93)	-37.33%	1,500.00	28.19%	1,077.11

Total Miscellaneous Revenue	\$ 4,995.16	\$ 4,881.11	2.34%	\$ 40,871.28	\$ 39,904.17	\$ 39,638.70	\$ 265.47	0.67%	\$ 60,720.00	65.72%	20,815.83
------------------------------------	--------------------	--------------------	--------------	---------------------	---------------------	---------------------	------------------	--------------	---------------------	---------------	------------------

TOTAL OPERATING REVENUE

	\$ 977,260.97	\$ 969,888.42	0.76%	\$ 7,427,819.70	\$ 8,084,731.26	\$ 7,922,157.27	\$ 162,573.99	2.05%	\$ 11,763,796.00	68.73%	3,679,064.74
--	----------------------	----------------------	--------------	------------------------	------------------------	------------------------	----------------------	--------------	-------------------------	---------------	---------------------

OPERATING EXPENSES

Generation

Fuel	133.73	419.63	-68.13%	3,512.25	10,963.41	7,357.12	3,606.29	49.02%	10,000.00	109.63%	(963.41)
Generation Expenses	7,175.07	4,579.90	56.66%	42,844.94	44,536.19	37,600.98	6,935.21	18.44%	57,000.00	78.13%	12,463.81
Maintenance: Generating & Electrical Equipment	1,181.27	790.98	49.34%	5,616.08	7,095.42	7,599.88	(504.46)	-6.64%	10,000.00	70.95%	2,904.58
Maintenance: Other Power Generation	561.63	592.42	-5.20%	7,476.27	4,717.82	7,518.43	(2,800.61)	-37.25%	11,000.00	42.89%	6,282.18
Maintenance: Structures	5,531.51	2,555.31	116.47%	9,456.65	10,522.17	13,366.29	(2,844.12)	-21.28%	22,000.00	47.83%	11,477.83
Maintenance: Supervision & Engineering	0.00	0.00	#DIV/0!	0.00	0.00	0.00	0.00	#DIV/0!	0.00	#DIV/0!	0.00
Miscellaneous Other Power Generation Expenses	3,335.43	1,435.38	132.37%	8,183.43	8,557.14	9,638.12	(1,080.98)	-11.22%	14,500.00	59.01%	5,942.86

February 2026 Income Statement

Line Item	Current Month Actual	Current Month Budget	Variance %	Prior YTD Actual	Current YTD Actual	Current YTD Budget	Current YTD Variance	Variance %	Yearly Budget Total	% of Budget Used	Amount Until Yearly Budget Total is Reached
Operating Supervision/Engineering	2,250.25	2,354.69	-4.44%	17,271.82	18,747.81	19,388.48	(640.67)	-3.30%	30,000.00	62.49%	11,252.19
Safety and Training Expense	388.68	1,432.98	-72.88%	1,436.77	406.00	5,799.31	(5,393.31)	-93.00%	7,500.00	5.41%	7,094.00
Tools	0.00	50.10	-100.00%	227.81	111.41	515.42	(404.01)	-78.38%	1,000.00	11.14%	888.59

Total Generation Expenses	\$ 20,557.57	\$ 14,211.38	44.66%	\$ 96,026.02	\$ 105,657.37	\$ 108,784.02	\$ (3,126.65)	-2.87%	\$ 163,000.00	64.82%	57,342.63
----------------------------------	--------------	--------------	--------	--------------	---------------	---------------	---------------	--------	---------------	--------	-----------

Purchased Power

AMP Ohio Energy Project	4,294.94	6,612.88	-35.05%	41,392.98	40,062.21	52,181.09	(12,118.88)	-23.22%	79,349.00	50.49%	39,286.79
Belle River Project	39,516.34	63,364.78	-37.64%	468,843.01	452,294.58	521,630.15	(69,335.57)	-13.29%	776,159.00	58.27%	323,864.42
Campbell Number 3 Project	134,985.18	34,238.68	294.25%	850,423.36	961,736.80	305,108.13	656,628.67	215.21%	441,995.00	217.59%	(519,741.80)
Deficiency Capacity Charge	(2,839.09)	8,449.03	-133.60%	3,586.54	12,040.84	73,614.28	(61,573.44)	-83.64%	116,091.00	10.37%	104,050.16
Forecasted Market Balancing	(304,233.02)	40,401.96	-853.02%	256,215.52	(644,981.76)	391,310.02	(1,036,291.78)	-264.83%	603,765.00	-106.83%	1,248,746.76
Energy Services Project	222,898.66	127,287.08	75.11%	136,103.20	1,616,099.54	1,045,520.07	570,579.47	54.57%	1,964,280.00	82.27%	348,180.46
Granger Energy Project	62,651.31	61,393.48	2.05%	578,735.47	510,935.82	499,113.34	11,822.48	2.37%	762,182.00	67.04%	251,246.18
MPPA Transmission Project	5,850.48	4,801.96	21.84%	29,568.71	47,408.66	39,769.93	7,638.73	19.21%	56,036.00	84.60%	8,627.34
Transmission Charge	3,185.99	(2,991.57)	-206.50%	111,368.73	195,332.65	221,187.44	(25,854.79)	-11.69%	224,153.00	87.14%	28,820.35
Kalkaska: CT Project	31,616.15	51,477.05	-38.58%	305,789.96	425,458.85	430,007.58	(4,548.73)	-1.06%	599,676.00	70.95%	174,217.15
MPPA Service Supply Committee Expense	4,825.46	3,865.26	24.84%	26,940.42	34,303.92	34,764.82	(460.90)	-1.33%	50,000.00	68.61%	15,696.08
Assembly Solar Project	16,864.78	17,458.88	-3.40%	175,606.45	230,718.34	234,813.09	(4,094.75)	-1.74%	424,983.00	54.29%	194,264.66
Pegasus Wind Project	31,373.94	28,416.61	10.41%	169,649.99	166,609.50	172,554.41	(5,944.91)	-3.45%	283,322.00	58.81%	116,712.50

Total Purchased Power Expenses	\$ 250,991.12	\$ 444,776.08	-43.57%	\$ 3,154,224.34	\$ 4,048,019.95	\$ 4,077,025.78	\$ 26,445.60	0.65%	\$ 6,381,991.00	63.43%	2,333,971.05
---------------------------------------	---------------	---------------	---------	-----------------	-----------------	-----------------	--------------	-------	-----------------	--------	--------------

Distribution

Customer Installation Expense	2,104.48	2,879.95	-26.93%	23,187.45	37,642.31	30,815.50	6,826.81	22.15%	45,000.00	83.65%	7,357.69
Load Dispatching	0.00	0.00	#DIV/0!	0.00	0.00	0.00	0.00	#DIV/0!	0.00	#DIV/0!	0.00
Maintenance: Line Transformers	0.00	108.65	-100.00%	39.58	8,213.87	2,088.53	6,125.34	293.28%	5,000.00	164.28%	(3,213.87)
Maintenance: Meters	0.00	2,383.02	-100.00%	4,059.64	10,589.77	8,832.93	1,756.84	19.89%	11,500.00	92.08%	910.23
Maintenance: Overhead Lines	8,903.67	7,051.77	26.26%	52,350.90	76,940.11	58,823.45	18,116.66	30.80%	81,000.00	94.99%	4,059.89
Maintenance: Street Lighting	0.00	679.89	-100.00%	5,722.97	2,248.30	9,156.62	(6,908.32)	-75.45%	13,500.00	16.65%	11,251.70
Maintenance: Structures	4,870.92	2,691.91	80.95%	8,828.38	10,207.04	15,711.85	(5,504.81)	-35.04%	24,000.00	42.53%	13,792.96
Maintenance: Substations	2,298.02	1,912.39	20.16%	9,294.51	24,776.24	14,073.87	10,702.37	76.04%	25,000.00	99.10%	223.76
Maintenance: Underground Lines	3,407.34	4,633.44	-26.46%	44,563.44	32,012.71	48,824.16	(16,811.45)	-34.43%	71,000.00	45.09%	38,987.29
Meter Expenses	0.00	0.00	#DIV/0!	0.00	0.00	0.00	0.00	#DIV/0!	0.00	#DIV/0!	0.00
Miscellaneous Distribution Expense	4,858.96	7,763.88	-37.42%	72,933.01	55,381.93	62,469.31	(7,087.38)	-11.35%	87,000.00	63.66%	31,618.07
Operation Supervision/Engineering	11,487.94	8,861.82	29.63%	67,715.19	92,862.42	63,912.72	28,949.70	45.30%	100,000.00	92.86%	7,137.58
Operation Supervision/Xmission System	0.00	209.17	-100.00%	273.26	563.42	484.23	79.19	16.35%	1,000.00	56.34%	436.58
Overhead Line Expenses	610.31	160.13	281.14%	885.83	716.45	1,867.46	(1,151.01)	-61.63%	2,500.00	28.66%	1,783.55
Street Lighting Expenses	0.00	0.00	#DIV/0!	0.00	0.00	0.00	0.00	#DIV/0!	0.00	#DIV/0!	0.00
Substation Expenses	0.00	6.27	-100.00%	70.19	165.50	130.27	35.23	27.04%	1,000.00	16.55%	834.50
Safety and Training Expense	7,814.21	3,378.02	131.33%	22,475.05	38,193.29	28,153.97	10,039.32	35.66%	47,000.00	81.26%	8,806.71
Tools	114.01	531.87	-78.56%	4,279.09	6,105.78	6,793.75	(687.97)	-10.13%	11,000.00	55.51%	4,894.22
Trucks and Transportation Expense	12,794.34	5,633.98	127.09%	55,974.12	45,453.01	38,303.12	7,149.89	18.67%	55,000.00	82.64%	9,546.99
Tree Trimming Expense	412.86	11,583.98	-96.44%	40,401.55	36,302.06	65,700.69	(29,398.63)	-44.75%	96,000.00	37.81%	59,697.94
Underground Line Expenses	0.00	391.51	-100.00%	9,430.92	1,025.38	9,963.66	(8,938.28)	-89.71%	14,000.00	7.32%	12,974.62

Total Distribution Expenses	\$ 59,677.06	\$ 60,861.66	-1.95%	\$ 422,485.08	\$ 479,399.59	\$ 466,106.09	\$ 13,293.50	2.85%	\$ 690,500.00	69.43%	211,100.41
------------------------------------	--------------	--------------	--------	---------------	---------------	---------------	--------------	-------	---------------	--------	------------

Customer Accounting

February 2026 Income Statement

Line Item	Current Month Actual	Current Month Budget	Variance %	Prior YTD Actual	Current YTD Actual	Current YTD Budget	Current YTD Variance	Variance %	Yearly Budget Total	% of Budget Used	Amount Until Yearly Budget Total is Reached
Customer Accounts: Supervision	1,510.27	1,685.16	-10.38%	10,888.73	12,623.78	14,257.54	(1,633.76)	-11.46%	21,500.00	58.72%	8,876.22
Customer Assistance Expense	3,895.90	4,152.08	-6.17%	26,267.03	29,122.97	32,900.32	(3,777.35)	-11.48%	50,000.00	58.25%	20,877.03
Customer Records/Collections Expense	6,562.07	6,641.55	-1.20%	48,257.43	54,322.09	60,465.42	(6,143.33)	-10.16%	92,000.00	59.05%	37,677.91
Customer Service Training	658.98	712.92	-7.57%	1,381.53	2,596.09	2,771.57	(175.48)	-6.33%	5,000.00	51.92%	2,403.91
Uncollectible Account Expense	0.00	0.00	#DIV/0!	0.00	0.00	0.00	0.00	#DIV/0!	0.00	#DIV/0!	0.00
Meter Reading Expense	1,660.81	1,997.74	-16.87%	14,281.08	13,042.70	16,238.81	(3,196.11)	-19.68%	25,000.00	52.17%	11,957.30
Miscellaneous Customer Accounts Expense	5,167.81	4,997.05	3.42%	35,641.07	41,365.38	40,151.20	1,214.18	3.02%	61,000.00	67.81%	19,634.62
EOC Program Portfolio											
Residential Program Portfolio	2,636.12	5,859.38	-55.01%	17,873.05	13,872.68	34,912.03	(21,039.35)	-60.26%	50,000.00	27.75%	36,127.32
Comm/Indust. Program Portfolio	3,047.02	13,300.00	-77.09%	45,808.20	26,625.79	95,900.00	(69,274.21)	-72.24%	140,000.00	19.02%	113,374.21
Portfolio-Level Costs (Admin)	2,124.74	978.96	117.04%	3,228.93	11,010.52	6,617.25	4,393.27	66.39%	10,000.00	110.11%	(1,010.52)
Total EOC Program Portfolio	7,807.88	20,138.34	-61.23%	66,910.18	51,508.99	137,429.28	(85,920.29)	-62.52%	200,000.00	25.75%	148,491.01
Total Customer Accounting Expense	\$ 27,263.72	\$ 40,324.85	-32.39%	\$ 203,627.05	\$ 204,582.00	\$ 304,214.13	\$ (99,632.13)	-32.75%	\$ 454,500.00	45.01%	249,918.00
Marketing and Advertising											
Advertising Expense	1,430.63	2,649.93	-46.01%	23,352.23	22,690.06	26,007.45	(3,317.39)	-12.76%	40,000.00	56.73%	17,309.94
Demonstrating and Selling Expense	0.00	0.00	#DIV/0!	0.00	0.00	0.00	0.00	#DIV/0!	0.00	#DIV/0!	0.00
Total Marketing and Advertising Expense	\$ 1,430.63	\$ 2,649.93	-46.01%	\$ 23,352.23	\$ 22,690.06	\$ 26,007.45	\$ (3,317.39)	-12.76%	\$ 40,000.00	56.73%	17,309.94
Admin./General/Outside Services											
Administrative and General Salaries	23,747.52	19,463.79	22.01%	135,462.96	166,265.54	151,971.77	14,293.77	9.41%	230,000.00	72.29%	63,734.46
Board Conferences and Training	0.00	290.40	-100.00%	0.00	1,468.16	1,335.00	133.16	9.97%	6,000.00	24.47%	4,531.84
Board Meeting and Related Expense	1,799.27	1,732.44	3.86%	12,052.58	13,780.09	14,818.42	(1,038.33)	-7.01%	21,000.00	65.62%	7,219.91
O/S: Accounting, Legal, Engineering & Consultant	3,000.00	11,149.48	-73.09%	49,763.62	52,280.72	106,402.11	(54,121.39)	-50.86%	138,100.00	37.86%	85,819.28
					0.00						
Total Admin/General/Outside Services Expense	\$ 28,546.79	\$ 32,636.11	-12.53%	\$ 197,279.16	\$ 233,794.51	\$ 274,527.30	\$ (40,732.79)	-14.84%	\$ 395,100.00	59.17%	161,305.49
Office, Insurance, & Maintenance											
Injuries, Damages, & Safety Expenses	2,100.00	1,636.10	28.35%	10,367.04	23,320.90	13,376.82	9,944.08	74.34%	20,000.00	116.60%	(3,320.90)
Maintenance: Office Building	428.22	1,233.37	-65.28%	2,454.69	5,515.77	6,601.54	(1,085.77)	-16.45%	13,000.00	42.43%	7,484.23
Office Supplies, Fees, Dues, Phone, Maintenance	25,464.00	17,525.86	45.29%	145,536.05	152,434.12	145,578.39	6,855.73	4.71%	225,000.00	67.75%	72,565.88
Property/Liability Insurance	5,490.50	5,833.33	-5.88%	42,642.16	43,962.00	46,666.67	(2,704.67)	-5.80%	70,000.00	62.80%	26,038.00
Total Office, Insurance, & Maintenance	\$ 33,482.72	\$ 27,672.57	21.00%	\$ 200,999.94	\$ 225,232.79	\$ 214,817.16	\$ 10,415.63	4.85%	\$ 328,000.00	68.67%	102,767.21
Employee Benefits & Other Compensation											
Compensated Absenses	5,734.55	9,373.01	-38.82%	107,946.58	140,679.79	146,606.99	(5,927.20)	-4.04%	206,539.50	68.11%	65,859.71
Employee Pensions & Benefits	68,968.93	64,967.47	6.16%	526,790.24	538,339.53	536,609.30	1,730.23	0.32%	852,628.58	63.14%	314,289.05
OPEB	0.00	0.00	#DIV/0!	0.00	0.00	0.00	0.00	#DIV/0!	10,000.00	0.00%	10,000.00
Other Compensation	7,058.06	5,483.55	28.71%	54,116.91	58,352.02	52,520.59	5,831.43	11.10%	80,000.00	72.94%	21,647.98
Taxes: Social Security & Medicare	8,756.66	9,686.80	-9.60%	71,143.06	78,091.80	86,583.40	(8,491.60)	-9.81%	122,000.00	64.01%	43,908.20
Retiree Medical Insurance Coverage	6,330.55	5,539.33	14.28%	48,004.82	51,884.00	47,638.22	4,245.78	8.91%	73,857.70	70.25%	21,973.70
Total Employee Benefits & Other Compensation	\$ 96,848.75	\$ 95,050.16	1.89%	\$ 808,001.61	\$ 867,347.14	\$ 869,958.50	\$ (2,611.36)	-0.30%	\$ 1,345,025.78	64.49%	477,678.64
Miscellaneous											
Conference/Seminar Expense	3,178.65	2,306.46	37.82%	51,268.20	39,660.99	51,321.64	(11,660.65)	-22.72%	79,500.00	49.89%	39,839.01

February 2026 Income Statement

Line Item	Current Month Actual	Current Month Budget	Variance %	Prior YTD Actual	Current YTD Actual	Current YTD Budget	Current YTD Variance	Variance %	Yearly Budget Total	% of Budget Used	Amount Until Yearly Budget Total is Reached
Benevolence - In Kind	0.00	917.40	-100.00%	12,133.32	2,694.72	7,333.70	(4,638.98)	-63.26%	11,000.00	24.50%	8,305.28
Benevolence - Financial	350.00	417.00	-16.07%	3,238.39	3,166.11	3,333.50	(167.39)	-5.02%	5,000.00	63.32%	1,833.89
Miscellaneous General Expenses	(13.63)	70.53	-119.33%	1,269.07	9,434.52	2,709.50	6,725.02	248.20%	4,000.00	235.86%	(5,434.52)
Total Miscellaneous Expenses	\$ 3,515.02	\$ 3,711.39	-5.29%	\$ 67,908.98	\$ 54,956.34	\$ 64,698.34	\$ (9,742.00)	-15.06%	\$ 99,500.00	55.23%	44,543.66
Depreciation Expenses											
Depreciation Expense	74,398.82	69,300.00	7.36%	542,907.96	572,485.28	554,400.00	18,085.28	3.26%	840,000.00	68.15%	267,514.72
Total Depreciation Expenses	\$ 74,398.82	\$ 69,300.00	7.36%	\$ 542,907.96	\$ 572,485.28	\$ 554,400.00	\$ 18,085.28	3.26%	\$ 840,000.00	68.15%	267,514.72
TOTAL OPERATING EXPENSES	\$ 596,712.20	\$ 789,750.20	-24.44%	\$ 5,716,812.37	\$ 6,814,165.03	\$ 6,902,493.61	\$ (88,328.58)	-1.28%	\$ 10,737,616.78	63.46%	3,923,451.75
OPERATING INCOME (LOSS)	\$ 380,548.77	\$ 180,138.22	111.25%	\$ 1,711,007.33	\$ 1,270,566.23	\$ 1,019,663.67	\$ 250,902.56	24.61%	\$ 1,026,179.22	123.82%	(244,387.01)
NON-OPERATING REVENUE (EXPENSE)											
Interest Income											
Interest and Dividend	9,753.31	3,411.15	185.92%	51,668.16	59,058.67	40,341.25	18,717.42	46.40%	60,000.00	98.43%	941.33
Fifth Third Investments FMV Change	0.00	0.00	#DIV/0!	0.00	0.00	0.00	0.00	#DIV/0!	0.00	#DIV/0!	0.00
Total Interest Income	\$ 9,753.31	\$ 3,411.15	185.92%	\$ 51,668.16	\$ 59,058.67	\$ 40,341.25	\$ 18,717.42	46.40%	\$ 60,000.00	98.43%	941.33
Interest Expense											
Interest Expense on Customer Deposits	0.00	0.00	#DIV/0!	(2,296.17)	(1,577.19)	0.00	(1,577.19)	#DIV/0!	0.00	#DIV/0!	1,577.19
Interest Expense Installment Purchase Loan(s)	0.00	0.00	#DIV/0!	0.00	0.00	0.00	0.00	#DIV/0!	0.00	#DIV/0!	0.00
Interest Expense Series 2012 Bonds	2,315.83	2,343.73	-1.19%	28,263.35	20,522.49	18,975.71	1,546.78	8.15%	28,237.67	72.68%	7,715.18
Total Interest Expense	\$ 2,315.83	\$ 2,343.73	-1.19%	\$ 25,967.18	\$ 18,945.30	\$ 18,975.71	\$ (30.41)	-0.16%	\$ 28,237.67	67.09%	9,292.37
Gain/Loss on Sale of Property/Investment											
Gain on Property Disposal	0.00	0.00	#DIV/0!	69,050.00	75.00	0.00	75.00	#DIV/0!	0.00	#DIV/0!	(75.00)
Gain on Sale of Investments	0.00	0.00	#DIV/0!	0.00	0.00	0.00	0.00	#DIV/0!	0.00	#DIV/0!	0.00
Loss on Property Disposal	0.00	0.00	#DIV/0!	(12,626.40)	0.00	0.00	0.00	#DIV/0!	0.00	#DIV/0!	0.00
Loss on Sale of Investments	0.00	0.00	#DIV/0!	0.00	0.00	0.00	0.00	#DIV/0!	0.00	#DIV/0!	0.00
Total Gain/Loss on Sale of Property/Investments	\$ -	\$ -	#DIV/0!	\$ 56,423.60	\$ 75.00	\$ -	\$ 75.00	#DIV/0!	\$ -	#DIV/0!	(75.00)
Mutual Aid											
Mutual Aid	0.00	0.00	#DIV/0!	13,695.60	14,696.69	0.00	14,696.69	#DIV/0!	0.00	#DIV/0!	(14,696.69)
Total Mutual Aid	\$ -	\$ -	#DIV/0!	\$ 13,695.60	\$ 14,696.69	\$ -	\$ 14,696.69	#DIV/0!	\$ -	#DIV/0!	(14,696.69)
Transfers											
PILOT - City of Lowell	38,109.95	41,548.22	-8.28%	290,605.81	347,829.70	347,439.72	389.98	0.11%	511,477.92	68.00%	163,648.22
Total Transfers	\$ 38,109.95	\$ 41,548.22	-8.28%	\$ 290,605.81	\$ 347,829.70	\$ 347,439.72	\$ 389.98	0.11%	\$ 511,477.92	68.00%	163,648.22

February 2026 Income Statement

Line Item	Current Month Actual	Current Month Budget	Variance %	Prior YTD Actual	Current YTD Actual	Current YTD Budget	Current YTD Variance	Variance %	Yearly Budget Total	% of Budget Used	Amount Until Yearly Budget Total is Reached
TOTAL NON-OPERATING REVENUE (EXPENSE)	\$ (30,672.47)	\$ (40,480.80)	-24.23%	\$ (194,785.63)	\$ (292,944.64)	\$ (326,074.19)	\$ 33,129.55	-10.16%	\$ (479,715.59)	61.07%	(186,770.95)
NET INCOME (LOSS)	\$ 349,876.30	\$ 139,657.42	150.52%	\$ 1,516,221.70	\$ 977,621.59	\$ 693,589.47	\$ 284,032.12	40.95%	\$ 546,463.63	178.90%	(431,157.96)

VENDOR/INVOICE GL NO	INVOICE DATE DUE DATE	PO # WO #	INVOICE AMOUNT DIST AMOUNT	1099	DISCOUNT FACTOR DISCOUNT AMOUNT	NET AMOUNT	CHECK NUMBER DATE	CHARGE MO
1187 - AFLAC								
964810	February Payroll Deductions	02/19/26	0	79.30	N	0.000	9999999	
242.250 20		02/09/26	0			79.30	02/27/26	202602
1099 YES: 0.00		1099 NO: 79.30						
VENDOR TOTAL:			1187 - AFLAC	79.30		79.30		

4191 - ALTEC INDUSTRIES, INC.								
51932110	Add automatic boom	02/10/26	0	5332.49	N	0.000	34386	
392.000 20		01/21/26	0			5332.49	02/10/26	202602
1099 YES: 0.00		1099 NO: 5332.49						
VENDOR TOTAL:			4191 - ALTEC INDUSTRIES, INC.	5332.49		5332.49		

8480 - AMAZON CAPITAL SERVICES, INC.								
1DP6C39D7HM1	Return Christmas glasses	02/03/26	0	-27.18	N	0.000	9999999	
930.250 20	MI	01/21/26	0			-27.18	02/18/26	202602
1MGCPYGR4ND9	UV Flashlight, USB Hub	02/27/26	0	13.97	N	0.000	9999999	
548.000 10	75	01/19/26	0			13.97	02/27/26	202602
1MGCPYGR4ND9	Junction Box, Wire	02/27/26	0	59.67	N	0.000	9999999	
588.200 20	79	01/19/26	0			59.67	02/27/26	202602
1MGCPYGR4ND9	UPS Battery Backup	02/27/26	0	83.99	N	0.000	9999999	
921.200 20	81	01/19/26	0			83.99	02/27/26	202602
1MGCPYGR4ND9	Employee Clothing	02/27/26	0	27.98	N	0.000	9999999	
926.250 20	EG	01/19/26	0			27.98	02/27/26	202602
1MGCPYGR4ND9	Memorial Wind Chimes, Sarah	02/27/26	0	16.99	N	0.000	9999999	
930.250 20	MI	01/19/26	0			16.99	02/27/26	202602
1MGCPYGR4ND9	iPad case for Daniel	02/27/26	0	24.69	N	0.000	9999999	
930.260 20	BE	01/19/26	0			24.69	02/27/26	202602
1NDRNHHW3MW7	Bottled Water pallet	02/04/26	0	300.00	N	0.000	9999999	
588.000 20	MI	01/05/26	0			300.00	02/18/26	202602
1NDRNHHW3MW7	Polypropylene Round Rod	02/04/26	0	21.33	N	0.000	9999999	
588.200 20	79	01/05/26	0			21.33	02/18/26	202602
1NDRNHHW3MW7	Strobe Light, Spray paint	02/04/26	0	131.82	N	0.000	9999999	
588.200 20	79	01/05/26	0			131.82	02/18/26	202602
1NDRNHHW3MW7	Copy paper, Space heater	02/04/26	0	78.87	N	0.000	9999999	
921.200 20	81	01/05/26	0			78.87	02/18/26	202602
1P4DVRR77VWR	Return Christmas glasses	02/03/26	0	-9.98	N	0.000	9999999	
930.250 20	MI	01/21/26	0			-9.98	02/18/26	202602
17TKLK47QR3J	Return Grinch costume	02/01/26	0	-59.99	N	0.000	9999999	
930.250 20	MI	01/22/26	0			-59.99	02/18/26	202602
1099 YES: 0.00		1099 NO: 662.16						
VENDOR TOTAL:			8480 - AMAZON CAPITAL SERVICES, INC.	662.16		662.16		

9067 - AMERICAN UNITED LIFE INSURANCE CO								
AUL0226	Life and AD&D Insurance	02/12/26	0	181.98	N	0.000	9999999	
926.050 20	33	02/02/26	0			181.98	02/18/26	202602
AUL0226	Short Term Disability	02/12/26	0	279.87	N	0.000	9999999	
926.050 20	36	02/02/26	0			279.87	02/18/26	202602
AUL0226	Long Term Disability	02/12/26	0	361.56	N	0.000	9999999	
926.050 20	36	02/02/26	0			361.56	02/18/26	202602
1099 YES: 0.00		1099 NO: 823.41						
VENDOR TOTAL:			9067 - AMERICAN UNITED LIFE INSURANCE CO	823.41		823.41		

9171 - AZAM, SYED								
-------------------	--	--	--	--	--	--	--	--

VENDOR/INVOICE	INVOICE DATE	PO #	INVOICE AMOUNT	1099	DISCOUNT FACTOR	CHECK NUMBER	CHARGE
GL NO	DUE DATE	WO #	DIST AMOUNT		DISCOUNT AMOUNT	DATE	MO
000012910001	REFUND CREDIT BALANCE 12910-1-1	02/27/26	0	179.27	N	0.000	100062
232.200 20		02/27/26	0		0.00	179.27	02/27/26 202602
1099 YES: 0.00		1099 NO: 179.27					
VENDOR TOTAL:		9171 - AZAM, SYED		179.27		179.27	
1090 - BERNARD'S ACE HARDWARE							
1576903	Batteries for welding helmet	02/10/26	6061	15.18	N	0.000	34387
588.100 20	79	01/07/26	0		0.00	15.18	02/10/26 202602
1577172	Trash bags, batteries, Weatherstripping	02/10/26	6061	48.97	N	0.000	34387
588.000 20	79	01/07/26	0		0.00	48.97	02/10/26 202602
1577218	Washer, Hex cap	02/10/26	6060	19.98	N	0.000	34387
548.000 10	75	01/08/26	0		0.00	19.98	02/10/26 202602
1581163	Paint, Grinding disc	02/10/26	6061	25.97	N	0.000	34387
588.000 20	79	01/26/26	0		0.00	25.97	02/10/26 202602
1581548	Drill bits	02/10/26	6061	24.99	N	0.000	34387
588.100 20	79	01/28/26	0		0.00	24.99	02/10/26 202602
1581913	Fasteners	02/10/26	6061	11.56	N	0.000	34387
921.200 20	81	01/29/26	0		0.00	11.56	02/10/26 202602
1099 YES: 0.00		1099 NO: 146.65					
VENDOR TOTAL:		1090 - BERNARD'S ACE HARDWARE		146.65		146.65	
9179 - BROUWERS, CARLY							
000014102001	REFUND CREDIT BALANCE 14102-1-1	02/27/26	0	183.19	N	0.000	100063
232.200 20		02/27/26	0		0.00	183.19	02/27/26 202602
1099 YES: 0.00		1099 NO: 183.19					
VENDOR TOTAL:		9179 - BROUWERS, CARLY		183.19		183.19	
5729 - Comcast							
COMCAST0226	City Charges	02/06/26	0	112.70	N	0.000	9999999
146.500 20		01/27/26	0		0.00	112.70	02/27/26 202602
COMCAST0226	LLP Charges	02/06/26	0	17.15	N	0.000	9999999
921.200 20	77	01/27/26	0		0.00	17.15	02/27/26 202602
1099 YES: 0.00		1099 NO: 129.85					
VENDOR TOTAL:		5729 - Comcast		129.85		129.85	
9176 - CASTRO, MEGHAN							
000013857001	REFUND CREDIT BALANCE 13857-1-1	02/27/26	0	116.62	N	0.000	100064
232.200 20		02/27/26	0		0.00	116.62	02/27/26 202602
1099 YES: 0.00		1099 NO: 116.62					
VENDOR TOTAL:		9176 - CASTRO, MEGHAN		116.62		116.62	
1010 - CITY OF LOWELL							
CTYREVFEB26	Feb 2026 PILOT Payment	02/10/26	0	38109.95	N	0.000	9999999
927.000 20	RC	01/31/26	0		0.00	38109.95	02/27/26 202602
1000501FEB26	Broadway water and sewer	02/10/26	0	171.18	N	0.000	9999999
921.200 20	80	01/31/26	0		0.00	171.18	02/27/26 202602
1043655FEB26	Chatham water and sewer	02/10/26	0	98.43	N	0.000	9999999
549.000 10	80	01/31/26	0		0.00	98.43	02/27/26 202602
1043655FEB26	Chatham water and sewer	02/10/26	0	98.43	N	0.000	9999999
588.000 20	80	01/31/26	0		0.00	98.43	02/27/26 202602
1099 YES: 0.00		1099 NO: 38477.99					
VENDOR TOTAL:		1010 - CITY OF LOWELL		38477.99		38477.99	

VENDOR/INVOICE GL NO	INVOICE DATE DUE DATE	PO # WO #	INVOICE AMOUNT DIST AMOUNT	1099	DISCOUNT FACTOR DISCOUNT AMOUNT	NET AMOUNT	CHECK NUMBER DATE	CHARGE MO
1013 - CONSUMERS ENERGY								
201632329432	Chatham heating	02/04/26	0	728.99	N	0.000	9999999	
549.000 10	80	01/25/26	0			728.99	02/18/26	202602
201632329432	Chatham heating	02/04/26	0	728.99	N	0.000	9999999	
588.000 20	80	01/25/26	0			728.99	02/18/26	202602
202077324827	Engine Room Generator	02/04/26	0	24.51	N	0.000	9999999	
921.200 20	80	01/25/26	0			24.51	02/18/26	202602
205547843060	CT Generators Gas	02/04/26	0	133.73	N	0.000	9999999	
547.000 10	67	01/25/26	0			133.73	02/18/26	202602
206704292404	Broadway heating	02/04/26	0	211.29	N	0.000	9999999	
588.000 20	80	01/25/26	0			211.29	02/18/26	202602
206704292404	Broadway heating	02/04/26	0	845.18	N	0.000	9999999	
921.200 20	80	01/25/26	0			845.18	02/18/26	202602
		1099 YES: 0.00	1099 NO: 2672.69					
VENDOR TOTAL:		1013 - CONSUMERS ENERGY		2672.69	2672.69			

7568 - DELTA DENTAL								
0002050469	Employee Premiums Withheld, Vision	02/11/26	0	152.14	N	0.000	9999999	
242.410 20		02/01/26	0			152.14	02/18/26	202602
0002050469	Employee Premiums Withheld	02/11/26	0	120.06	N	0.000	9999999	
242.550 20		02/01/26	0			120.06	02/18/26	202602
0002050469	Employer Dental Expense	02/11/26	0	1079.84	N	0.000	9999999	
926.050 20	32	02/01/26	0			1079.84	02/18/26	202602
		1099 YES: 0.00	1099 NO: 1352.04					
VENDOR TOTAL:		7568 - DELTA DENTAL		1352.04	1352.04			

366 - DROOG, MARK								
DROOG0226	Boot allowance, 1 pair	02/18/26	0	211.14	N	0.000	9999999	
588.000 20	57	02/04/26	0			211.14	02/18/26	202602
		1099 YES: 0.00	1099 NO: 211.14					
VENDOR TOTAL:		366 - DROOG, MARK		211.14	211.14			

4855 - FEDERAL TAX DEPOSIT								
2060091	FICA Taxes WH PE 2/15/26	02/18/26	0	3425.50	N	0.000	9999999	
241.100 20		02/18/26	0			3425.50	02/27/26	202602
2060091	Med Taxes WH PE 2/15/26	02/18/26	0	801.14	N	0.000	9999999	
241.200 20		02/18/26	0			801.14	02/27/26	202602
2060091	Fed Taxes WH PE 2/15/26	02/18/26	0	5073.09	N	0.000	9999999	
241.000 20		02/18/26	0			5073.09	02/27/26	202602
2060091	FICA/Med Tax Exp WH PE 2/15/26	02/18/26	0	4226.63	N	0.000	9999999	
408.350 20	30	02/18/26	0			4226.63	02/27/26	202602
72855224	FICA Taxes WH PE 2/1/26	02/04/26	0	3671.40	N	0.000	9999999	
241.100 20		02/04/26	0			3671.40	02/27/26	202602
72855224	Med Taxes WH PE 2/1/26	02/04/26	0	858.66	N	0.000	9999999	
241.200 20		02/04/26	0			858.66	02/27/26	202602
72855224	Fed Taxes WH PE 2/1/26	02/04/26	0	5608.41	N	0.000	9999999	
241.000 20		02/04/26	0			5608.41	02/27/26	202602
72855224	FICA/Med Tax Exp WH PE 2/1/26	02/04/26	0	4530.03	N	0.000	9999999	
408.350 20	30	02/04/26	0			4530.03	02/27/26	202602
		1099 YES: 0.00	1099 NO: 28194.86					
VENDOR TOTAL:		4855 - FEDERAL TAX DEPOSIT		28194.86	28194.86			

1936 - FIFTH THIRD BANK

VENDOR/INVOICE	INVOICE DATE	PO #	INVOICE AMOUNT	1099	DISCOUNT FACTOR	CHECK NUMBER	CHARGE
GL NO	DUE DATE	WO #	DIST AMOUNT		DISCOUNT AMOUNT	DATE	MO
BONDFEB26	BOND INTEREST PAYABLE	02/12/26	0	1500.00	N	0.000	9999999
129.200 20		02/02/26	0		0.00	1500.00	02/18/26 202602
BONDFEB26	BOND PRINCIPAL PAYABLE	02/12/26	0	24583.33	N	0.000	9999999
129.200 20		02/02/26	0		0.00	24583.33	02/18/26 202602
VENDOR TOTAL:		1099 YES: 0.00	1099 NO: 26083.33	26083.33		26083.33	
2843 - FIFTH THIRD BANK							
Mier0226	Motor	02/10/26	0	258.00	N	0.000	9999999
552.000 10	79	01/31/26	0		0.00	258.00	02/27/26 202602
Mier0226	Pipes, coupling, valves	02/10/26	0	55.87	N	0.000	9999999
553.000 10	79	01/31/26	0		0.00	55.87	02/27/26 202602
Mier0226	Business Breakfast food	02/10/26	0	52.47	N	0.000	9999999
908.620 20	EO	01/31/26	0		0.00	52.47	02/27/26 202602
Mora0226	Acrobat Acrobat yearly subscription	02/10/26	0	572.02	N	0.000	9999999
921.200 20	HS	01/31/26	0		0.00	572.02	02/27/26 202602
Mora0226	Notary bond, Julie	02/10/26	0	55.00	N	0.000	9999999
921.200 20	MF	01/31/26	0		0.00	55.00	02/27/26 202602
Mora0226	TimeLogix software	02/10/26	0	28.12	N	0.000	9999999
921.200 20	MF	01/31/26	0		0.00	28.12	02/27/26 202602
Mora0226	TimeLogix service payment	02/10/26	0	187.50	N	0.000	9999999
921.200 20	MF	01/31/26	0		0.00	187.50	02/27/26 202602
Pape0226	Sympathy cards	02/10/26	0	4.24	N	0.000	9999999
921.200 20	81	01/31/26	0		0.00	4.24	02/27/26 202602
Pape0226	Employee hats	02/10/26	0	89.18	N	0.000	9999999
926.250 20	EG	01/31/26	0		0.00	89.18	02/27/26 202602
Pape0226	Office Employee Clothing, return	02/10/26	0	-82.18	N	0.000	9999999
926.250 20	EG	01/31/26	0		0.00	-82.18	02/27/26 202602
Pape0226	Memorial donation for Julie's uncle	02/10/26	0	51.99	N	0.000	9999999
930.250 20	MI	01/31/26	0		0.00	51.99	02/27/26 202602
Pape0226	Board meeting food	02/10/26	0	49.81	N	0.000	9999999
930.260 20	BE	01/31/26	0		0.00	49.81	02/27/26 202602
Pape0226	Board, Township meeting food	02/10/26	0	61.35	N	0.000	9999999
930.260 20	BE	01/31/26	0		0.00	61.35	02/27/26 202602
Stew0226	Quarterly Federal Filing	02/10/26	0	5.49	N	0.000	9999999
921.200 20	MF	01/31/26	0		0.00	5.49	02/27/26 202602
Stew0226	Notary embosser, stamp	02/10/26	0	56.85	N	0.000	9999999
921.200 20	81	01/31/26	0		0.00	56.85	02/27/26 202602
Stew0226	Postage	02/10/26	0	300.00	N	0.000	9999999
921.200 20	86	01/31/26	0		0.00	300.00	02/27/26 202602
Stew0226	Stamps.com Fee	02/10/26	0	20.99	N	0.000	9999999
921.200 20	86	01/31/26	0		0.00	20.99	02/27/26 202602
Stew0226	Postage	02/10/26	0	200.00	N	0.000	9999999
921.200 20	86	01/31/26	0		0.00	200.00	02/27/26 202602
Stew0226	Business breakfast food	02/10/26	0	67.41	N	0.000	9999999
908.620 20	EO	01/31/26	0		0.00	67.41	02/27/26 202602
Walk0226	Parts return	02/10/26	0	-25.74	N	0.000	9999999
588.200 20	79	01/31/26	0		0.00	-25.74	02/27/26 202602
Walk0226	Metal parts for tree truck	02/10/26	0	145.22	N	0.000	9999999
588.200 20	79	01/31/26	0		0.00	145.22	02/27/26 202602
Walk0226	Prepaid cards	02/10/26	0	2027.80	N	0.000	9999999
593.000 20	MI	01/31/26	0		0.00	2027.80	02/27/26 202602

VENDOR/INVOICE	INVOICE DATE	PO #	INVOICE AMOUNT	1099	DISCOUNT FACTOR	CHECK NUMBER	CHARGE
GL NO	DUE DATE	WO #	DIST AMOUNT		DISCOUNT AMOUNT	DATE	MO
Walk0226	Safety training food	02/10/26	0	190.69	N	9999999	
926.250	20	EG	01/31/26	0	0.00	190.69	02/27/26 202602
Walk0226	APPA Lineworkers Rodeo registration	02/10/26	0	630.00	N	9999999	
930.200	20	CF	01/31/26	0	0.00	630.00	02/27/26 202602
West0226	Lunch with board member	02/10/26	0	46.16	N	9999999	
930.000	20	BL	01/31/26	0	0.00	46.16	02/27/26 202602
West0226	Networking lunch, Charlie, Julie, Alyssa	02/10/26	0	69.55	N	9999999	
930.000	20	BL	01/31/26	0	0.00	69.55	02/27/26 202602
West0226	APPA Legislative Rally, flight	02/10/26	0	417.96	N	9999999	
930.000	20	CF	01/31/26	0	0.00	417.96	02/27/26 202602
VENDOR TOTAL:		1099 YES: 0.00	1099 NO: 5535.75	2843 - FIFTH THIRD BANK	5535.75	5535.75	
3488 - FLAT RIVER EMBROIDERY							
2941	Embroidery on office clothing	02/24/26	0	288.00	N	34392	
926.250	20	EG	02/14/26	0	0.00	288.00	02/25/26 202602
VENDOR TOTAL:		1099 YES: 0.00	1099 NO: 288.00	3488 - FLAT RIVER EMBROIDERY	288.00	288.00	
4788 - FLAT RIVER OUTREACH MINISTRY							
LEO202601	LEO Pymts, Admin Fees Jan 26	02/25/26	0	147.18	N	34393	
232.090	20		01/31/26	0	0.00	147.18	02/25/26 202602
VENDOR TOTAL:		1099 YES: 0.00	1099 NO: 147.18	4788 - FLAT RIVER OUTREACH MINISTRY	147.18	147.18	
2878 - FLEETCOR TECHNOLOGIES							
NP69883083	Trk #55 Fuel	02/02/26	0	48.60	N	9999999	
184.010	20		01/26/26	0	0.00	48.60	02/27/26 202602
NP69883083	Trk #56 Fuel	02/02/26	0	68.80	N	9999999	
184.010	20		01/26/26	0	0.00	68.80	02/27/26 202602
NP69883083	Trk #57 Fuel	02/02/26	0	66.83	N	9999999	
184.010	20		01/26/26	0	0.00	66.83	02/27/26 202602
NP69883083	Trk #60 Fuel	02/02/26	0	110.38	N	9999999	
184.010	20		01/26/26	0	0.00	110.38	02/27/26 202602
NP69883083	Misc #1	02/02/26	0	73.84	N	9999999	
588.100	20	74	01/26/26	0	0.00	73.84	02/27/26 202602
NP69991153	Trk #55 Fuel	02/13/26	0	93.56	N	9999999	
184.010	20		02/09/26	0	0.00	93.56	02/27/26 202602
NP69991153	Trk #56 Fuel	02/13/26	0	74.68	N	9999999	
184.010	20		02/09/26	0	0.00	74.68	02/27/26 202602
NP69991153	Trk #59 Fuel	02/13/26	0	69.08	N	9999999	
184.010	20		02/09/26	0	0.00	69.08	02/27/26 202602
NP69991153	Trk #60 Fuel	02/13/26	0	51.11	N	9999999	
184.010	20		02/09/26	0	0.00	51.11	02/27/26 202602
NP69991153	Card Fee	02/13/26	0	80.00	N	9999999	
588.200	20	MF	02/09/26	0	0.00	80.00	02/27/26 202602
VENDOR TOTAL:		1099 YES: 0.00	1099 NO: 736.88	2878 - FLEETCOR TECHNOLOGIES	736.88	736.88	
9177 - GABRIEL, RORY							
000013956001	REFUND CREDIT BALANCE 13956-1-1	02/27/26	0	148.08	N	100065	
232.200	20		02/27/26	0	0.00	148.08	02/27/26 202602

VENDOR/INVOICE GL NO	INVOICE DATE DUE DATE	PO # WO #	INVOICE AMOUNT DIST AMOUNT	1099	DISCOUNT FACTOR DISCOUNT AMOUNT	NET AMOUNT	CHECK NUMBER DATE	CHARGE MO
1099 YES: 0.00		1099 NO: 148.08						
VENDOR TOTAL:		9177 - GABRIEL, RORY		148.08		148.08		
9178 - GAFFNER, OWEN								
000014088001	REFUND CREDIT BALANCE 14088-1-1	02/27/26	0	172.28	N	0.000	100066	
232.200	20	02/27/26	0			172.28	02/27/26	202602
1099 YES: 0.00		1099 NO: 172.28						
VENDOR TOTAL:		9178 - GAFFNER, OWEN		172.28		172.28		
1081 - GENUINE AUTO PARTS COMPANY-GD RAPIDS								
895494	Oil, 5 qt	02/20/26	6063	110.97	N	0.000	9999999	
588.200	20	01/05/26	0			110.97	02/27/26	202602
895623	Break away system, Cleaning wipes	02/20/26	6063	81.13	N	0.000	9999999	
588.200	20	01/06/26	0			81.13	02/27/26	202602
895664	Spring U-bolt	02/20/26	6063	173.16	N	0.000	9999999	
588.200	20	01/06/26	0			173.16	02/27/26	202602
895991	Return Spring U-bolt	02/20/26	6063	-173.16	N	0.000	9999999	
588.200	20	01/09/26	0			-173.16	02/27/26	202602
896965	Lynch pins, Tape	02/20/26	6063	15.48	N	0.000	9999999	
588.200	20	01/19/26	0			15.48	02/27/26	202602
897151	Hyd oil	02/20/26	6063	79.99	N	0.000	9999999	
588.200	20	01/21/26	0			79.99	02/27/26	202602
897200	Adapters, Hose fittings, Hose	02/20/26	6063	102.88	N	0.000	9999999	
588.200	20	01/21/26	0			102.88	02/27/26	202602
897231	Hose fitting	02/20/26	6063	24.58	N	0.000	9999999	
588.200	20	01/21/26	0			24.58	02/27/26	202602
897418	Battery	02/20/26	6063	64.12	N	0.000	9999999	
588.200	20	01/23/26	0			64.12	02/27/26	202602
1099 YES: 0.00		1099 NO: 479.15						
VENDOR TOTAL:		1081 - GENUINE AUTO PARTS COMPANY-GD RAPIDS		479.15		479.15		
8834 - GFL ENVIRONMENTAL								
KR0063986717	Cardboard Dumpster, Purforms	02/19/26	0	40.00	N	0.000	9999999	
232.950	20	01/20/26	0			40.00	02/18/26	202602
KR0063986717	Trash, Recycling Services	02/19/26	0	109.30	N	0.000	9999999	
549.000	10	01/20/26	0			109.30	02/18/26	202602
KR0063986717	Trash, Recycling Services	02/19/26	0	109.30	N	0.000	9999999	
588.000	20	01/20/26	0			109.30	02/18/26	202602
KR0063986717	Trash, Recycling Services	02/19/26	0	55.95	N	0.000	9999999	
921.200	20	01/20/26	0			55.95	02/18/26	202602
1099 YES: 0.00		1099 NO: 314.55						
VENDOR TOTAL:		8834 - GFL ENVIRONMENTAL		314.55		314.55		
216 - HOOPER PRINTING								
72122	Welcome flyer	02/22/26	0	68.95	N	0.000	34394	
913.000	20	02/12/26	0			68.95	02/25/26	202602
1099 YES: 0.00		1099 NO: 68.95						
VENDOR TOTAL:		216 - HOOPER PRINTING		68.95		68.95		
8536 - HUNTINGTON BANK BOND REDEMPTION								
HUNTBOND0226	Bond Interest Payable	02/18/26	0	815.83	N	0.000	9999999	
129.250	20	02/02/26	0			815.83	02/18/26	202602

VENDOR/INVOICE	INVOICE DATE	PO #	INVOICE AMOUNT	1099	DISCOUNT FACTOR	CHECK NUMBER	CHARGE
GL NO	DUE DATE	WO #	DIST AMOUNT		DISCOUNT AMOUNT	DATE	MO
HUNTBOND0226	Bond Principal Payable	02/18/26	0	12083.33	N	9999999	
129.250 20		02/02/26	0		0.00	12083.33	02/18/26 202602
VENDOR TOTAL:		1099 YES: 0.00	1099 NO: 12899.16	12899.16		12899.16	
6452 - IBEW- LOCAL 876							
DUES0126	Dues (6)	02/10/26	0	260.00	N	34388	
242.730 20		02/10/26	0		0.00	260.00	02/10/26 202602
PERCENT0126	IBEW (6) 1.5% (see spreadsheet)	02/10/26	0	829.23	N	34388	
242.730 20		02/10/26	0		0.00	829.23	02/10/26 202602
VENDOR TOTAL:		1099 YES: 0.00	1099 NO: 1089.23	1089.23		1089.23	
7174 - IBEW/NECA FAMILY MEDICAL CARE PLAN							
NECA0226	Retiree Premiums Invoiced	02/05/26	0	146.20	N	9999999	
232.850 20		01/26/26	0		0.00	146.20	02/18/26 202602
NECA0226	Employee Premiums Withheld	02/05/26	0	676.53	N	9999999	
242.500 20		01/26/26	0		0.00	676.53	02/18/26 202602
NECA0226	Retiree Medical Expense	02/05/26	0	1315.80	N	9999999	
926.000 20	34	01/26/26	0		0.00	1315.80	02/18/26 202602
NECA0226	Employee Medical Expense	02/05/26	0	6088.59	N	9999999	
926.050 20	31	01/26/26	0		0.00	6088.59	02/18/26 202602
VENDOR TOTAL:		1099 YES: 0.00	1099 NO: 8227.12	8227.12		8227.12	
8371 - INVOICE CLOUD							
266120261	Paperless Billing	02/10/26	0	850.00	N	9999999	
903.200 20	87	01/31/26	0		0.00	850.00	02/18/26 202602
266120261	Credit Card Fees	02/10/26	0	2964.84	N	9999999	
905.200 20	MF	01/31/26	0		0.00	2964.84	02/18/26 202602
266120261	Portal, OBD, Reject Fees	02/10/26	0	245.00	N	9999999	
921.200 20	MF	01/31/26	0		0.00	245.00	02/18/26 202602
VENDOR TOTAL:		1099 YES: 0.00	1099 NO: 4059.84	4059.84		4059.84	
6629 - IP CONSULTING INC							
DG1226	City Charges	02/23/26	0	1611.75	N	9999999	
146.500 20		02/13/26	0		0.00	1611.75	02/27/26 202602
DG1226	LLP Charges	02/23/26	0	245.27	N	9999999	
921.200 20	77	02/13/26	0		0.00	245.27	02/27/26 202602
19508	City charges	02/07/26	0	1470.00	N	9999999	
146.500 20		01/28/26	0		0.00	1470.00	02/18/26 202602
19508	LLP Charges	02/07/26	0	1470.00	N	9999999	
165.500 20	SS	01/28/26	0		0.00	1470.00	02/18/26 202602
19537	Lowell PD Squad Car Computers	02/10/26	0	321.25	N	9999999	
146.500 20		01/31/26	0		0.00	321.25	02/27/26 202602
19540	Microsoft Intune Down Payment, Labor	02/19/26	0	7900.00	N	9999999	
921.200 20	OS	02/09/26	0		0.00	7900.00	02/27/26 202602
19581	City Charges	02/21/26	0	4951.62	N	9999999	
146.500 20		02/11/26	0		0.00	4951.62	02/27/26 202602
19581	LLP Charges	02/21/26	0	3505.48	N	9999999	
921.200 20	OS	02/11/26	0		0.00	3505.48	02/27/26 202602

VENDOR/INVOICE	INVOICE DATE	PO #	INVOICE AMOUNT	1099	DISCOUNT FACTOR	CHECK NUMBER	CHARGE
GL NO	DUE DATE	WO #	DIST AMOUNT		DISCOUNT AMOUNT	DATE	MO
19582	Block Time Refresh	02/21/26	0	4375.00	N	9999999	
232.950	20	02/11/26	0		0.00	02/27/26	202602
19583	City Charges	02/21/26	0	993.60	N	9999999	
146.500	20	02/11/26	0		0.00	02/27/26	202602
19583	LLP Charges	02/21/26	0	533.40	N	9999999	
921.200	20	02/11/26	0		0.00	02/27/26	202602
19584	City Charges Foxit PDF Editor	02/21/26	0	70.00	N	9999999	
146.500	20	02/11/26	0		0.00	02/27/26	202602
VENDOR TOTAL:		1099 YES: 0.00	1099 NO: 27447.37	27447.37		27447.37	
6629 - IP CONSULTING INC							
6377 - IRBY							
S014379451.3	Danger Keep Out Label, FN14597	02/11/26	6032	500.00	N	9999999	
925.000	20	01/13/26	0		0.00	02/27/26	202602
VENDOR TOTAL:		1099 YES: 0.00	1099 NO: 500.00	500.00		500.00	
6377 - IRBY							
6343 - Kraft Business Systems							
888070	Billing	02/18/26	0	63.72	N	9999999	
903.200	20	01/19/26	0		0.00	02/27/26	202602
888070	Admin Fee	02/18/26	0	15.95	N	9999999	
921.200	20	01/19/26	0		0.00	02/27/26	202602
888070	Black Copies	02/18/26	0	100.98	N	9999999	
921.200	20	01/19/26	0		0.00	02/27/26	202602
888070	Color Copies	02/18/26	0	287.35	N	9999999	
921.200	20	01/19/26	0		0.00	02/27/26	202602
VENDOR TOTAL:		1099 YES: 0.00	1099 NO: 468.00	468.00		468.00	
6343 - Kraft Business Systems							
6637 - KLOSNER, KATHERINE							
EVREBATE0226	EV Rebate	02/10/26	0	350.00	N	34389	
908.570	20	02/04/26	0		0.00	02/10/26	202602
VENDOR TOTAL:		1099 YES: 0.00	1099 NO: 350.00	350.00		350.00	
6637 - KLOSNER, KATHERINE							
9172 - LETT, BREANNE							
000013009001	REFUND CREDIT BALANCE 13009-1-1	02/27/26	0	63.52	N	100067	
232.200	20	02/27/26	0		0.00	02/27/26	202602
VENDOR TOTAL:		1099 YES: 0.00	1099 NO: 63.52	63.52		63.52	
9172 - LETT, BREANNE							
8895 - LOWELL HIGH SCHOOL							
LHS0226	Girls Lacrosse Sponsorship	02/25/26	0	350.00	N	34395	
930.230	20	02/23/26	0		0.00	02/25/26	202602
VENDOR TOTAL:		1099 YES: 0.00	1099 NO: 350.00	350.00		350.00	
8895 - LOWELL HIGH SCHOOL							
9122 - LOWELL LIGHT & POWER LEO FUND							
LEO0226	Lowell Energy Outreach Fund	02/18/26	0	3008.65	N	9999999	
130.600	20	01/30/26	0		0.00	02/18/26	202602
LEO0226	Lowell Energy Outreach Fund Adj	02/18/26	0	-0.95	N	9999999	
130.600	20	01/30/26	0		0.00	02/18/26	202602

VENDOR/INVOICE	INVOICE DATE	PO #	INVOICE AMOUNT	1099	DISCOUNT FACTOR	CHECK NUMBER	CHARGE
GL NO	DUE DATE	WO #	DIST AMOUNT		DISCOUNT AMOUNT	DATE	MO
LEO0226	FROM Payments, Jan 2026	02/18/26	0	-147.18	N	9999999	
130.600	20	01/30/26	0		0.00	02/18/26	202602
1099 YES: 0.00		1099 NO: 2860.52					
VENDOR TOTAL:			9122 - LOWELL LIGHT & POWER LEO FUND	2860.52		2860.52	
6850 - LOWELL LIGHT AND POWER - PAYMENTS							
106780040226	Chatham electric	02/09/26	0	603.71	N	9999999	
549.000	10	01/30/26	0		0.00	02/27/26	202602
106780040226	Chatham electric	02/09/26	0	603.70	N	9999999	
588.000	20	01/30/26	0		0.00	02/27/26	202602
106780050226	Broadway electric	02/09/26	0	142.62	N	9999999	
588.000	20	01/30/26	0		0.00	02/27/26	202602
106780050226	Broadway electric	02/09/26	0	570.47	N	9999999	
921.200	20	01/30/26	0		0.00	02/27/26	202602
1099 YES: 0.00		1099 NO: 1920.50					
VENDOR TOTAL:			6850 - LOWELL LIGHT AND POWER - PAYMENTS	1920.50		1920.50	
9180 - MALLINDINE, AVA							
000014176001	REFUND CREDIT BALANCE 14176-1-1	02/27/26	0	189.68	N	100068	
232.200	20	02/27/26	0		0.00	02/27/26	202602
1099 YES: 0.00		1099 NO: 189.68					
VENDOR TOTAL:			9180 - MALLINDINE, AVA	189.68		189.68	
9175 - MATTHYSSE, TARA							
000013505001	REFUND CREDIT BALANCE 13505-1-1	02/27/26	0	22.92	N	34398	
232.200	20	02/27/26	0		0.00	02/27/26	202602
1099 YES: 0.00		1099 NO: 22.92					
VENDOR TOTAL:			9175 - MATTHYSSE, TARA	22.92		22.92	
4169 - MERS OF MICHIGAN							
HCSP0226	HCSP Retirees	02/27/26	0	2925.00	N	9999999	
926.000	20	02/19/26	0		0.00	02/27/26	202602
MERS0226	MERS Employee Exp- Feb 2026	02/20/26	0	1211.32	N	9999999	
926.050	20	02/20/26	0		0.00	02/27/26	202602
MERS0226	MERS Employee Exp Hybrid- Feb 2026	02/20/26	0	1866.63	N	9999999	
242.150	20	02/20/26	0		0.00	02/27/26	202602
MERS0226	MERS Employee Exp DC- Feb 2026	02/20/26	0	2733.98	N	9999999	
242.150	20	02/20/26	0		0.00	02/27/26	202602
MERS0226	MERS Employer Exp- Feb 2026	02/20/26	0	27724.63	N	9999999	
926.050	20	02/20/26	0		0.00	02/27/26	202602
MERS0226	MERS Employer Exp DC- Feb 2026	02/20/26	0	6866.47	N	9999999	
926.050	20	02/20/26	0		0.00	02/27/26	202602
MERS0226	MERS Forfeiture- Feb 2026	02/20/26	0	-270.80	N	9999999	
926.050	20	02/20/26	0		0.00	02/27/26	202602
00176370	Monthly Surplus	02/27/26	0	12500.00	N	9999999	
926.050	20	02/28/26	0		0.00	02/27/26	202602
1099 YES: 0.00		1099 NO: 55557.23					
VENDOR TOTAL:			4169 - MERS OF MICHIGAN	55557.23		55557.23	
413 - MICH DEPT OF ENVIRONMENTAL QUALITY							
11385961	Category D Facility Charge	02/13/26	0	1795.00	N	9999999	
549.000	10	01/14/26	0		0.00	02/18/26	202602

VENDOR/INVOICE GL NO	INVOICE DATE DUE DATE	PO # WO #	INVOICE AMOUNT DIST AMOUNT	1099	DISCOUNT FACTOR DISCOUNT AMOUNT	NET AMOUNT	CHECK NUMBER DATE	CHARGE MO
1099 YES: 0.00		1099 NO: 1795.00						
VENDOR TOTAL:		413 - MICH DEPT OF ENVIRONMENTAL QUALITY		1795.00		1795.00		
846 - MICHIGAN MUNICIPAL LEAGUE								
6340207	Workers Comp FY 26	02/21/26	0	3458.00	N	0.000	34396	
165.500	20 WC	02/11/26	0			0.00	3458.00	02/25/26 202602
1099 YES: 0.00		1099 NO: 3458.00						
VENDOR TOTAL:		846 - MICHIGAN MUNICIPAL LEAGUE		3458.00		3458.00		
4822 - MICHIGAN PUBLIC POWER AGENCY								
LOWE20260127	RAA Capacity Credit	02/12/26	0	-346.71	N	0.000	9999999	
555.000	20 60	02/02/26	0			0.00	-346.71	02/20/26 202602
LOWE20260127	Campbell OH	02/12/26	0	64.06	N	0.000	9999999	
555.100	20 OH	02/02/26	0			0.00	64.06	02/20/26 202602
LOWE20260127	Belle River OH	02/12/26	0	35.37	N	0.000	9999999	
555.200	20 OH	02/02/26	0			0.00	35.37	02/20/26 202602
LOWE20260127	Solar OH	02/12/26	0	27.09	N	0.000	9999999	
555.630	20 OH	02/02/26	0			0.00	27.09	02/20/26 202602
LOWE20260127	Assembly I Contract Cost	02/12/26	0	770.19	N	0.000	9999999	
555.630	20 61	02/02/26	0			0.00	770.19	02/20/26 202602
LOWE20260127	Assembly II Contract Cost	02/12/26	0	855.52	N	0.000	9999999	
555.630	20 61	02/02/26	0			0.00	855.52	02/20/26 202602
LOWE20260127	Calhoun Contract Cost	02/12/26	0	692.16	N	0.000	9999999	
555.630	20 61	02/02/26	0			0.00	692.16	02/20/26 202602
LOWE20260127	Brandt Woods Contract Cost	02/12/26	0	377.66	N	0.000	9999999	
555.630	20 61	02/02/26	0			0.00	377.66	02/20/26 202602
LOWE20260127	White Tail Contract Cost	02/12/26	0	310.91	N	0.000	9999999	
555.630	20 61	02/02/26	0			0.00	310.91	02/20/26 202602
LOWE20260127	Pegasus OH	02/12/26	0	18.18	N	0.000	9999999	
555.640	20 OH	02/02/26	0			0.00	18.18	02/20/26 202602
LOWE20260127	Pegasus Contract Cost	02/12/26	0	10045.12	N	0.000	9999999	
555.640	20 61	02/02/26	0			0.00	10045.12	02/20/26 202602
LOWE20260127	PJM Project Cost	02/12/26	0	1108.96	N	0.000	9999999	
555.660	20 61	02/02/26	0			0.00	1108.96	02/20/26 202602
LOWE20260127	Bilat Contract	02/12/26	0	60988.42	N	0.000	9999999	
555.670	20 BI	02/02/26	0			0.00	60988.42	02/20/26 202602
LOWE20260127	ESP OH	02/12/26	0	390.61	N	0.000	9999999	
555.670	20 OH	02/02/26	0			0.00	390.61	02/20/26 202602
LOWE20260127	Load Generation Surplus	02/12/26	0	-11192.74	N	0.000	9999999	
555.670	20 62	02/02/26	0			0.00	-11192.74	02/20/26 202602
LOWE20260127	PJM Generation	02/12/26	0	-1958.57	N	0.000	9999999	
555.670	20 62	02/02/26	0			0.00	-1958.57	02/20/26 202602
LOWE20260127	Load Generation Deficiency	02/12/26	0	1622.95	N	0.000	9999999	
555.670	20 63	02/02/26	0			0.00	1622.95	02/20/26 202602
LOWE20260203	RAA Capacity Credit	02/13/26	0	-1768.24	N	0.000	9999999	
555.000	20 60	02/03/26	0			0.00	-1768.24	02/20/26 202602
LOWE20260203	Campbell OH	02/13/26	0	54.06	N	0.000	9999999	
555.100	20 OH	02/03/26	0			0.00	54.06	02/20/26 202602
LOWE20260203	Belle River OH	02/13/26	0	31.93	N	0.000	9999999	
555.200	20 OH	02/03/26	0			0.00	31.93	02/20/26 202602
LOWE20260203	Kalkaska CT OH	02/13/26	0	98.34	N	0.000	9999999	
555.250	20 OH	02/03/26	0			0.00	98.34	02/20/26 202602

VENDOR/INVOICE	INVOICE DATE	PO #	INVOICE AMOUNT	1099	DISCOUNT FACTOR	CHECK NUMBER	CHARGE
GL NO	DUE DATE	WO #	DIST AMOUNT		DISCOUNT AMOUNT	NET AMOUNT	DATE
LOWE20260203	Solar OH	02/13/26	0	21.41	N	0.000	9999999
555.630	20	OH	02/03/26	0	0.00	21.41	02/20/26 202602
LOWE20260203	Assembly Contract Cost	02/13/26	0	1221.05	N	0.000	9999999
555.630	20	61	02/03/26	0	0.00	1221.05	02/20/26 202602
LOWE20260203	Assembly II Contract Cost	02/13/26	0	1282.92	N	0.000	9999999
555.630	20	61	02/03/26	0	0.00	1282.92	02/20/26 202602
LOWE20260203	Calhoun Contract Cost	02/13/26	0	832.95	N	0.000	9999999
555.630	20	61	02/03/26	0	0.00	832.95	02/20/26 202602
LOWE20260203	Brandt Woods Contract Cost	02/13/26	0	538.43	N	0.000	9999999
555.630	20	61	02/03/26	0	0.00	538.43	02/20/26 202602
LOWE20260203	White Tail Contract Cost	02/13/26	0	544.30	N	0.000	9999999
555.630	20	61	02/03/26	0	0.00	544.30	02/20/26 202602
LOWE20260203	Pegasus OH	02/13/26	0	16.44	N	0.000	9999999
555.640	20	OH	02/03/26	0	0.00	16.44	02/20/26 202602
LOWE20260203	Pegasus Contract Cost	02/13/26	0	11563.71	N	0.000	9999999
555.640	20	61	02/03/26	0	0.00	11563.71	02/20/26 202602
LOWE20260203	PJM Project Cost	02/13/26	0	1046.69	N	0.000	9999999
555.660	20	61	02/03/26	0	0.00	1046.69	02/20/26 202602
LOWE20260203	AFEC 2026 Cost Adjustment	02/13/26	0	-11.85	N	0.000	9999999
555.660	20	61	02/03/26	0	0.00	-11.85	02/20/26 202602
LOWE20260203	Bilat Contract	02/13/26	0	50180.91	N	0.000	9999999
555.670	20	BI	02/03/26	0	0.00	50180.91	02/20/26 202602
LOWE20260203	ESP OH	02/13/26	0	335.16	N	0.000	9999999
555.670	20	OH	02/03/26	0	0.00	335.16	02/20/26 202602
LOWE20260203	Load Generation Surplus	02/13/26	0	-21622.53	N	0.000	9999999
555.670	20	62	02/03/26	0	0.00	-21622.53	02/20/26 202602
LOWE20260203	PJM Generation	02/13/26	0	-1761.56	N	0.000	9999999
555.670	20	62	02/03/26	0	0.00	-1761.56	02/20/26 202602
LOWE20260203	MVP Distribution	02/13/26	0	-0.01	N	0.000	9999999
555.670	20	62	02/03/26	0	0.00	-0.01	02/20/26 202602
LOWE20260203	Load Generation Deficiency	02/13/26	0	2460.77	N	0.000	9999999
555.670	20	63	02/03/26	0	0.00	2460.77	02/20/26 202602
LOWE20260210	RAA Capacity Credit	02/20/26	0	-401.22	N	0.000	9999999
555.000	20	60	02/10/26	0	0.00	-401.22	02/20/26 202602
LOWE20260210	Monthly Capacity January 2026	02/20/26	0	23.79	N	0.000	9999999
555.000	20	60	02/10/26	0	0.00	23.79	02/20/26 202602
LOWE20260210	Campbell OH	02/20/26	0	1552.61	N	0.000	9999999
555.100	20	OH	02/10/26	0	0.00	1552.61	02/20/26 202602
LOWE20260210	Belle River OH	02/20/26	0	871.00	N	0.000	9999999
555.200	20	OH	02/10/26	0	0.00	871.00	02/20/26 202602
LOWE20260210	Kalkaska CT OH	02/20/26	0	335.71	N	0.000	9999999
555.250	20	OH	02/10/26	0	0.00	335.71	02/20/26 202602
LOWE20260210	Monthly Transmission Prior Adj	02/20/26	0	-73.46	N	0.000	9999999
555.400	20	64	02/10/26	0	0.00	-73.46	02/20/26 202602
LOWE20260210	Monthly Transmission January 2	02/20/26	0	5397.23	N	0.000	9999999
555.400	20	64	02/10/26	0	0.00	5397.23	02/20/26 202602
LOWE20260210	Solar OH	02/20/26	0	325.21	N	0.000	9999999
555.630	20	OH	02/10/26	0	0.00	325.21	02/20/26 202602
LOWE20260210	Assembly I Contract Cost	02/20/26	0	1336.58	N	0.000	9999999
555.630	20	61	02/10/26	0	0.00	1336.58	02/20/26 202602
LOWE20260210	Assembly II Contract Cost	02/20/26	0	1438.36	N	0.000	9999999
555.630	20	61	02/10/26	0	0.00	1438.36	02/20/26 202602

VENDOR/INVOICE	INVOICE DATE	PO #	INVOICE AMOUNT	1099	DISCOUNT FACTOR	CHECK NUMBER	CHARGE
GL NO	DUE DATE	WO #	DIST AMOUNT		DISCOUNT AMOUNT	NET AMOUNT	DATE MO
LOWE20260210	Calhoun Contract Cost	02/20/26	0	597.21	N	0.000	9999999
555.630 20	61	02/10/26	0		0.00	597.21	02/20/26 202602
LOWE20260210	Brandt Woods Contract Cost	02/20/26	0	523.03	N	0.000	9999999
555.630 20	61	02/10/26	0		0.00	523.03	02/20/26 202602
LOWE20260210	White Tail Contract Cost	02/20/26	0	468.39	N	0.000	9999999
555.630 20	61	02/10/26	0		0.00	468.39	02/20/26 202602
LOWE20260210	Pegasus OH	02/20/26	0	6.91	N	0.000	9999999
555.640 20	OH	02/10/26	0		0.00	6.91	02/20/26 202602
LOWE20260210	Pegasus Contract Cost	02/20/26	0	5002.79	N	0.000	9999999
555.640 20	61	02/10/26	0		0.00	5002.79	02/20/26 202602
LOWE20260210	PJM Project Cost	02/20/26	0	1233.97	N	0.000	9999999
555.660 20	61	02/10/26	0		0.00	1233.97	02/20/26 202602
LOWE20260210	Bilat Contract	02/20/26	0	49175.29	N	0.000	9999999
555.670 20	BI	02/10/26	0		0.00	49175.29	02/20/26 202602
LOWE20260210	ESP OH	02/20/26	0	2514.10	N	0.000	9999999
555.670 20	OH	02/10/26	0		0.00	2514.10	02/20/26 202602
LOWE20260210	Load Generation Surplus	02/20/26	0	-217653.82	N	0.000	9999999
555.670 20	62	02/10/26	0		0.00	-217653.82	02/20/26 202602
LOWE20260210	PJM Generation	02/20/26	0	-2757.53	N	0.000	9999999
555.670 20	62	02/10/26	0		0.00	-2757.53	02/20/26 202602
LOWE20260210	Load Generation Deficiency	02/20/26	0	8320.99	N	0.000	9999999
555.670 20	63	02/10/26	0		0.00	8320.99	02/20/26 202602
LOWE20260217	RAA Capacity Credit	02/27/26	0	-346.71	N	0.000	9999999
555.000 20	60	02/17/26	0		0.00	-346.71	02/20/26 202602
LOWE20260217	Campbell OH	02/27/26	0	164.85	N	0.000	9999999
555.100 20	OH	02/17/26	0		0.00	164.85	02/20/26 202602
LOWE20260217	Belle River OH	02/27/26	0	44.44	N	0.000	9999999
555.200 20	OH	02/17/26	0		0.00	44.44	02/20/26 202602
LOWE20260217	Kalkaska CT OH	02/27/26	0	142.64	N	0.000	9999999
555.250 20	OH	02/17/26	0		0.00	142.64	02/20/26 202602
LOWE20260217	Stage II ARR	02/27/26	0	-2137.78	N	0.000	9999999
555.400 20	64	02/17/26	0		0.00	-2137.78	02/20/26 202602
LOWE20260217	Solar OH	02/27/26	0	20.92	N	0.000	9999999
555.630 20	OH	02/17/26	0		0.00	20.92	02/20/26 202602
LOWE20260217	Assembly I Contract Cost	02/27/26	0	1369.06	N	0.000	9999999
555.630 20	61	02/17/26	0		0.00	1369.06	02/20/26 202602
LOWE20260217	Assembly II Contract Cost	02/27/26	0	1529.84	N	0.000	9999999
555.630 20	61	02/17/26	0		0.00	1529.84	02/20/26 202602
LOWE20260217	Calhoun Contract Cost	02/27/26	0	867.33	N	0.000	9999999
555.630 20	61	02/17/26	0		0.00	867.33	02/20/26 202602
LOWE20260217	Brandt Woods Contract Cost	02/27/26	0	439.61	N	0.000	9999999
555.630 20	61	02/17/26	0		0.00	439.61	02/20/26 202602
LOWE20260217	White Tail Contract Cost	02/27/26	0	474.65	N	0.000	9999999
555.630 20	61	02/17/26	0		0.00	474.65	02/20/26 202602
LOWE20260217	Pegasus OH	02/27/26	0	12.10	N	0.000	9999999
555.640 20	OH	02/17/26	0		0.00	12.10	02/20/26 202602
LOWE20260217	Pegasus Contract Cost	02/27/26	0	4708.69	N	0.000	9999999
555.640 20	61	02/17/26	0		0.00	4708.69	02/20/26 202602
LOWE20260217	PJM Project Cost	02/27/26	0	1819.69	N	0.000	9999999
555.660 20	61	02/17/26	0		0.00	1819.69	02/20/26 202602
LOWE20260217	Bilat Contract	02/27/26	0	49175.29	N	0.000	9999999
555.670 20	BI	02/17/26	0		0.00	49175.29	02/20/26 202602

VENDOR/INVOICE	INVOICE DATE	PO #	INVOICE AMOUNT	1099	DISCOUNT FACTOR	CHECK NUMBER	CHARGE
GL NO	DUE DATE	WO #	DIST AMOUNT		DISCOUNT AMOUNT	NET AMOUNT	DATE
LOWE20260217	02/27/26	0	595.97	N	0.000	9999999	
555.670 20	OH	0			0.00	595.97	02/20/26 202602
LOWE20260217	02/27/26	0	-61490.22	N	0.000	9999999	
555.670 20	62 Load Generation Surplus	0			0.00	-61490.22	02/20/26 202602
LOWE20260217	02/27/26	0	-19043.26	N	0.000	9999999	
555.670 20	62 PJM Generation	0			0.00	-19043.26	02/20/26 202602
LOWE20260217	02/27/26	0	-122.84	N	0.000	9999999	
555.670 20	62 MVP Distribution	0			0.00	-122.84	02/20/26 202602
LOWE20260217	02/27/26	0	20965.35	N	0.000	9999999	
555.670 20	63 Load Generation Deficiency	0			0.00	20965.35	02/20/26 202602
20260202009	02/20/26	0	30288.91	N	0.000	9999999	
555.100 20	61 Campbell Estimated and Actual	0			0.00	30288.91	02/20/26 202602
20260202009	02/20/26	0	102860.69	N	0.000	9999999	
555.100 20	61 Consumers Actual Costs	0			0.00	102860.69	02/20/26 202602
20260203011	02/20/26	0	11589.75	N	0.000	9999999	
555.200 20	61 Belle River Estimated and Actual	0			0.00	11589.75	02/20/26 202602
20260203011	02/20/26	0	26943.85	N	0.000	9999999	
555.200 20	61 DTE Actual Costs	0			0.00	26943.85	02/20/26 202602
20260205001	02/20/26	0	22240.59	N	0.000	9999999	
555.250 20	61 CT Project Estimated and Actual	0			0.00	22240.59	02/20/26 202602
20260205001	02/20/26	0	8798.87	N	0.000	9999999	
555.250 20	61 TC and Fuel Costs	0			0.00	8798.87	02/20/26 202602
20260207006	02/20/26	0	5850.48	N	0.000	9999999	
555.600 20	64 Transmission Project Actual Costs	0			0.00	5850.48	02/20/26 202602
20260208009	02/20/26	0	824.91	N	0.000	9999999	
555.650 20	61 MPPA Exp Incurred Actual	0			0.00	824.91	02/20/26 202602
20260208009	02/20/26	0	55124.66	N	0.000	9999999	
555.650 20	61 Granger Energy Purch Actual	0			0.00	55124.66	02/20/26 202602
20260208009	02/20/26	0	-51689.90	N	0.000	9999999	
555.650 20	61 Granger Energy Purch Estimated	0			0.00	-51689.90	02/20/26 202602
20260208009	02/20/26	0	14069.71	N	0.000	9999999	
555.650 20	61 NANR Energy Purch Actual	0			0.00	14069.71	02/20/26 202602
20260208009	02/20/26	0	-14675.78	N	0.000	9999999	
555.650 20	61 NANR Energy Purch Estimated	0			0.00	-14675.78	02/20/26 202602
20260208009	02/20/26	0	46544.35	N	0.000	9999999	
555.650 20	61 Granger Energy Purch Estimated	0			0.00	46544.35	02/20/26 202602
20260208009	02/20/26	0	12453.36	N	0.000	9999999	
555.650 20	61 NANR Energy Purch Estimated	0			0.00	12453.36	02/20/26 202602
20260209008	02/20/26	0	-902.52	N	0.000	9999999	
555.660 20	61 AFEC Power Cost Adjustment	0			0.00	-902.52	02/20/26 202602
20260210017	02/20/26	0	737.14	N	0.000	9999999	
556.500 20	DR Distributed Energy Resources Svc Committ	0			0.00	737.14	02/20/26 202602
20260210017	02/20/26	0	2809.47	N	0.000	9999999	
556.500 20	LG Long Term Power Supply Service Comm	0			0.00	2809.47	02/20/26 202602
20260210017	02/20/26	0	207.33	N	0.000	9999999	
556.500 20	NC NERC Compliance Support Committee	0			0.00	207.33	02/20/26 202602
20260210017	02/20/26	0	227.91	N	0.000	9999999	
556.500 20	RS Generators Service Committee	0			0.00	227.91	02/20/26 202602
20260210017	02/20/26	0	514.67	N	0.000	9999999	
556.500 20	TI Transmission Investment Srvc Committee	0			0.00	514.67	02/20/26 202602
20260210017	02/20/26	0	328.94	N	0.000	9999999	
556.500 20	UR Utility State Reg Compliance Srvc Commit	0			0.00	328.94	02/20/26 202602

VENDOR/INVOICE GL NO	INVOICE DATE DUE DATE	PO # WO #	INVOICE AMOUNT DIST AMOUNT	1099	DISCOUNT FACTOR DISCOUNT AMOUNT	NET AMOUNT	CHECK NUMBER DATE	CHARGE MO
20260210017 908.410 20	Feb 26 Res Low Inc EFEL Member Charges FE 02/20/26 02/10/26	0 0	100.53	N	0.000 0.00	100.53	9999999 02/20/26	202602
20260210017 908.500 20	Feb 26 Residential Member Charges FE 02/20/26 02/10/26	0 0	1521.02	N	0.000 0.00	1521.02	9999999 02/20/26	202602
20260210017 908.505 20	Feb 26 Res EFEL Member Charges FE 02/20/26 02/10/26	0 0	74.46	N	0.000 0.00	74.46	9999999 02/20/26	202602
20260210017 908.640 20	Feb 26 Commercial Member Charges FE 02/20/26 02/10/26	0 0	2076.58	N	0.000 0.00	2076.58	9999999 02/20/26	202602
20260210017 908.650 20	Feb 26 Com EFEL Member Charges FE 02/20/26 02/10/26	0 0	197.32	N	0.000 0.00	197.32	9999999 02/20/26	202602
20260210017 908.700 20	Clean Energy Service Committee AM 02/20/26 02/10/26	0 0	43.07	N	0.000 0.00	43.07	9999999 02/20/26	202602
20260210017 908.700 20	Retail Energy Improvement Program AM 02/20/26 02/10/26	0 0	438.28	N	0.000 0.00	438.28	9999999 02/20/26	202602
20260219009 124.000 20	ESP Working Capital 02/20/26 02/10/26	0 0	5283.21	N	0.000 0.00	5283.21	9999999 02/20/26	202602
20260219009 555.670 20	ESP Actual Costs AM 02/20/26 02/10/26	0 0	14942.91	N	0.000 0.00	14942.91	9999999 02/20/26	202602
20260219009 555.670 20	White Tail Solar Delay Damages AM 02/20/26 02/10/26	0 0	-5400.00	N	0.000 0.00	-5400.00	9999999 02/20/26	202602
VENDOR TOTAL:		1099 YES: 0.00 4822 - MICHIGAN PUBLIC POWER AGENCY	1099 NO: 260725.59 260725.59			260725.59		

7206 - MICHIGAN STATE DISBURSEMENT UNIT								
JWILSON0204 242.980 20	Garnishment ID 914020391, Wilson 02/04/26 02/05/26	0 0	509.66	N	0.000 0.00	509.66	9999999 02/18/26	202602
JWILSON0218 242.980 20	Garnishment ID 914020391, Wilson 02/27/26 02/18/26	0 0	509.66	N	0.000 0.00	509.66	9999999 02/27/26	202602
VENDOR TOTAL:		1099 YES: 0.00 7206 - MICHIGAN STATE DISBURSEMENT UNIT	1099 NO: 1019.32 1019.32			1019.32		

7631 - MILSOFT UTILITY SOLUTIONS								
20260179 902.000 20	MDM Fee Feb 26 SS 02/02/26 01/01/26	0 0	500.00	N	0.000 0.00	500.00	9999999 02/18/26	202602
20260179 903.200 20	ePrint Fee Nov 25 87 02/02/26 01/01/26	0 0	80.00	N	0.000 0.00	80.00	9999999 02/18/26	202602
20260179 921.200 20	ASP Monthly Fee Feb 26 A1 02/02/26 01/01/26	0 0	820.00	N	0.000 0.00	820.00	9999999 02/18/26	202602
20260179 921.200 20	eBusiness Fee Feb 26 EB 02/02/26 01/01/26	0 0	675.00	N	0.000 0.00	675.00	9999999 02/18/26	202602
20260179 921.200 20	Monthly Support CIS, FMS, WMS 48 02/02/26 01/01/26	0 0	1424.70	N	0.000 0.00	1424.70	9999999 02/18/26	202602
20261478 107.710 20	Data Pull Conversion Services OS 02/08/26 01/29/26	0 3717	35000.00	N	0.000 0.00	35000.00	9999999 02/18/26	202602
VENDOR TOTAL:		1099 YES: 0.00 7631 - MILSOFT UTILITY SOLUTIONS	1099 NO: 38499.70 38499.70			38499.70		

8013 - NEONOVA NETWORK SERVICES								
NNS93261 921.200 20	December 2025 Answering Service MF 02/10/26 01/31/26	0 0	520.00	N	0.000 0.00	520.00	34390 02/10/26	202602
VENDOR TOTAL:		1099 YES: 0.00 8013 - NEONOVA NETWORK SERVICES	1099 NO: 520.00 520.00			520.00		

VENDOR/INVOICE GL NO	INVOICE DATE DUE DATE	PO # WO #	INVOICE AMOUNT DIST AMOUNT	1099	DISCOUNT FACTOR DISCOUNT AMOUNT	NET AMOUNT	CHECK NUMBER DATE	CHARGE MO
9169 - NOON TIRE (EQUIPMENT)								
000002476001	REFUND CREDIT BALANCE 2476-2-1	02/27/26	0	430.00	N	0.000	3741	
232.200 20		02/27/26	0			0.00	430.00	02/27/26 202602
1099 YES: 0.00		1099 NO: 430.00						
VENDOR TOTAL:			9169 - NOON TIRE (EQUIPMENT)		430.00		430.00	
8372 - PAYMENTECH, LLC								
POSFEESJAN26	POS Fees, Jan 26	02/10/26	0	25.48	N	0.000	9999999	
905.200 20	MF	01/31/26	0			0.00	25.48	02/18/26 202602
130193JAN26	Interchange, Assessment Fees Jan 26	02/10/26	0	1214.65	N	0.000	9999999	
905.200 20	MF	01/31/26	0			0.00	1214.65	02/18/26 202602
1099 YES: 0.00		1099 NO: 1240.13						
VENDOR TOTAL:			8372 - PAYMENTECH, LLC		1240.13		1240.13	
1110 - PETTY CASH								
PETTYCSH0226	Reimburse Petty Cash	02/25/26	0	256.95	N	0.000	34397	
130.400 20		02/23/26	0			0.00	256.95	02/25/26 202602
1099 YES: 0.00		1099 NO: 256.95						
VENDOR TOTAL:			1110 - PETTY CASH		256.95		256.95	
9174 - PILKINTON, JACOB								
000013442001	REFUND CREDIT BALANCE 13442-1-1	02/27/26	0	124.97	N	0.000	100069	
232.200 20		02/27/26	0			0.00	124.97	02/27/26 202602
1099 YES: 0.00		1099 NO: 124.97						
VENDOR TOTAL:			9174 - PILKINTON, JACOB		124.97		124.97	
1063 - POWER LINE SUPPLY								
56946484	Hat Hard FullBrim White, 60400	02/06/26	6033	930.00	N	0.000	9999999	
925.000 20	SA	01/02/26	0			0.00	930.00	02/27/26 202602
56946485	Shield, Woodpecker 30in x 100ft, 01-203	02/06/26	6034	1740.00	N	0.000	9999999	
593.000 20	79	01/02/26	0			0.00	1740.00	02/27/26 202602
56947460	PVC, Conduit 4", Sch 40, 10'	02/06/26	6052	742.50	N	0.000	9999999	
232.400 20		01/07/26	0			0.00	742.50	02/27/26 202602
56947460	Wire, 1/0 OH Triplex	02/06/26	6052	1740.00	N	0.000	9999999	
232.400 20		01/07/26	0			0.00	1740.00	02/27/26 202602
56950335	Wire, 1/0 OH Triplex	02/06/26	6052	1740.00	N	0.000	9999999	
232.400 20		01/19/26	0			0.00	1740.00	02/27/26 202602
56951545	Testing and Cleaning, Gloves	02/06/26	0	44.00	N	0.000	9999999	
925.200 20	OS	01/23/26	0			0.00	44.00	02/27/26 202602
56951545	Testing and Cleaning, Gloves	02/06/26	0	154.00	N	0.000	9999999	
925.200 20	OS	01/23/26	0			0.00	154.00	02/27/26 202602
56951545	Testing and Cleaning, Sleeves	02/06/26	0	169.00	N	0.000	9999999	
925.200 20	OS	01/23/26	0			0.00	169.00	02/27/26 202602
56951545	Glove CL2 16in Bell YB	02/06/26	0	580.00	N	0.000	9999999	
925.200 20	54	01/23/26	0			0.00	580.00	02/27/26 202602
56951746	Hendrix Clamp, Messenger, MC-2	02/06/26	6050	494.67	N	0.000	9999999	
232.400 20		01/26/26	0			0.00	494.67	02/27/26 202602
56952956	Meter Hub 2in	02/06/26	6050	196.19	N	0.000	9999999	
154.100 20		02/02/26	0			0.00	196.19	02/27/26 202602
1099 YES: 0.00		1099 NO: 8530.36						
VENDOR TOTAL:			1063 - POWER LINE SUPPLY		8530.36		8530.36	
1806 - PRIORITY HEALTH								

VENDOR/INVOICE GL NO	INVOICE DATE DUE DATE	PO # WO #	INVOICE AMOUNT DIST AMOUNT	1099	DISCOUNT FACTOR DISCOUNT AMOUNT	NET AMOUNT	CHECK NUMBER DATE	CHARGE MO
260170000410	Retiree Premiums Invoiced	02/02/26	0	232.21	N	0.000	9999999	
232.850 20		01/16/26	0			232.21	02/18/26	202602
260170000410	Employee Premiums Withheld	02/02/26	0	1255.32	N	0.000	9999999	
242.500 20		01/16/26	0			1255.32	02/18/26	202602
260170000410	Retiree Medical Expense	02/02/26	0	2089.75	N	0.000	9999999	
926.000 20	34	01/16/26	0			2089.75	02/18/26	202602
260170000410	Employee Medical Expense	02/02/26	0	11297.44	N	0.000	9999999	
926.050 20	31	01/16/26	0			11297.44	02/18/26	202602
VENDOR TOTAL:		1099 YES: 0.00	1099 NO: 14874.72	14874.72		14874.72		
1806 - PRIORITY HEALTH								
4930 - RONDA AUTO CENTERS								
77152	Tire Repair	02/05/26	0	25.00	N	0.000	34391	
588.200 20	OS	01/26/26	0			25.00	02/10/26	202602
VENDOR TOTAL:		1099 YES: 0.00	1099 NO: 25.00	25.00		25.00		
4930 - RONDA AUTO CENTERS								
8974 - SECURE EDUCATION CONSULTANTS, LLC								
4025	Annual Security Partnership	02/06/26	0	3000.00	N	0.000	9999999	
923.000 20	OS	01/07/26	0			3000.00	02/18/26	202602
VENDOR TOTAL:		1099 YES: 0.00	1099 NO: 3000.00	3000.00		3000.00		
8974 - SECURE EDUCATION CONSULTANTS, LLC								
8440 - SPECTROTEL								
13533771	City Charges	02/11/26	0	393.51	N	0.000	9999999	
146.500 20		02/01/26	0			393.51	02/27/26	202602
13533771	LLP Charges	02/11/26	0	70.01	N	0.000	9999999	
921.200 20	77	02/01/26	0			70.01	02/27/26	202602
VENDOR TOTAL:		1099 YES: 0.00	1099 NO: 463.52	463.52		463.52		
8440 - SPECTROTEL								
4851 - STATE OF MICHIGAN-SALES AND WH TAX								
SALESTAX1.26	Sales Tax Billed- Jan 26	02/25/26	0	20577.14	N	0.000	9999999	
236.000 20		02/25/26	0			20577.14	02/27/26	202602
SALESTAX1.26	Sales Tax Discount- Jan 26	02/25/26	0	-132.56	N	0.000	9999999	
236.000 20		02/25/26	0			-132.56	02/27/26	202602
SALESTAX1.26	Mich Withholding Tax- Jan 26	02/25/26	0	5138.86	N	0.000	9999999	
241.300 20		02/25/26	0			5138.86	02/27/26	202602
VENDOR TOTAL:		1099 YES: 0.00	1099 NO: 25583.44	25583.44		25583.44		
4851 - STATE OF MICHIGAN-SALES AND WH TAX								
9170 - THURTELL, STEPHEN								
000009442001	REFUND CREDIT BALANCE 9442-1-1	02/27/26	0	27.35	N	0.000	3742	
232.200 20		02/27/26	0			27.35	02/27/26	202602
VENDOR TOTAL:		1099 YES: 0.00	1099 NO: 27.35	27.35		27.35		
9170 - THURTELL, STEPHEN								
5034 - TRACTOR SUPPLY COMPANY								
851977	Heater for north sub	02/23/26	6062	69.98	N	0.000	9999999	
591.000 20	79	01/19/26	0			69.98	02/27/26	202602
852334	Spray paint	02/23/26	6062	7.99	N	0.000	9999999	
588.200 20	79	01/21/26	0			7.99	02/27/26	202602

VENDOR/INVOICE	INVOICE DATE	PO #	INVOICE AMOUNT	1099	DISCOUNT FACTOR	CHECK NUMBER	CHARGE	
GL NO	DUE DATE	WO #	DIST AMOUNT		DISCOUNT AMOUNT	DATE	MO	
852364	Lock nuts, Pump sprayer	02/23/26	6062	47.57	N	0.000	9999999	
588.000	20	79	01/21/26	0	0.00	47.57	02/27/26	202602
853685	Spray bottle, Caster wheels	02/23/26	6062	74.95	N	0.000	9999999	
588.000	20	79	01/29/26	0	0.00	74.95	02/27/26	202602
853888	Push spreader	02/23/26	6062	64.99	N	0.000	9999999	
591.250	20	79	01/26/26	0	0.00	64.99	02/27/26	202602
854308	Steel	02/23/26	6062	78.48	N	0.000	9999999	
548.000	10	75	01/27/26	0	0.00	78.48	02/27/26	202602
VENDOR TOTAL:		1099 YES: 0.00	1099 NO: 343.96	5034 - TRACTOR SUPPLY COMPANY	343.96		343.96	
1073 - U S POSTAL SERVICE								
POSTAGE02.26	Monthly Postage for Billing- Feb 26	02/26/26	0	603.79	N	0.000	34399	
903.200	20	85	02/26/26	0	0.00	603.79	02/27/26	202602
VENDOR TOTAL:		1099 YES: 0.00	1099 NO: 603.79	1073 - U S POSTAL SERVICE	603.79		603.79	
8988 - UMB BANK								
UMBHSA0226	Employee Deductions	02/27/26	0	1171.16	N	0.000	9999999	
242.910	20		02/24/26	0	0.00	1171.16	02/27/26	202602
UMBHSA0226	Employer Contributions	02/27/26	0	833.32	N	0.000	9999999	
926.050	20	HA	02/24/26	0	0.00	833.32	02/27/26	202602
VENDOR TOTAL:		1099 YES: 0.00	1099 NO: 2004.48	8988 - UMB BANK	2004.48		2004.48	
5544 - Verizon Wireless								
6133241184	Line Dept cell Phones	02/02/26	0	370.60	N	0.000	9999999	
588.000	20	77	01/10/26	0	0.00	370.60	02/18/26	202602
6134242829	Line Dept iPads	02/10/26	0	119.38	N	0.000	9999999	
588.000	20	77	01/23/26	0	0.00	119.38	02/18/26	202602
6134242829	Office Cell Phone	02/10/26	0	51.94	N	0.000	9999999	
921.200	20	77	01/23/26	0	0.00	51.94	02/18/26	202602
VENDOR TOTAL:		1099 YES: 0.00	1099 NO: 541.92	5544 - Verizon Wireless	541.92		541.92	
9173 - WALTERS, TESSANDRA								
000013189001	REFUND CREDIT BALANCE 13189-1-1	02/27/26	0	62.55	N	0.000	100070	
232.200	20		02/27/26	0	0.00	62.55	02/27/26	202602
VENDOR TOTAL:		1099 YES: 0.00	1099 NO: 62.55	9173 - WALTERS, TESSANDRA	62.55		62.55	
FINAL	0.00		592671.65	592671.65		592671.65		